

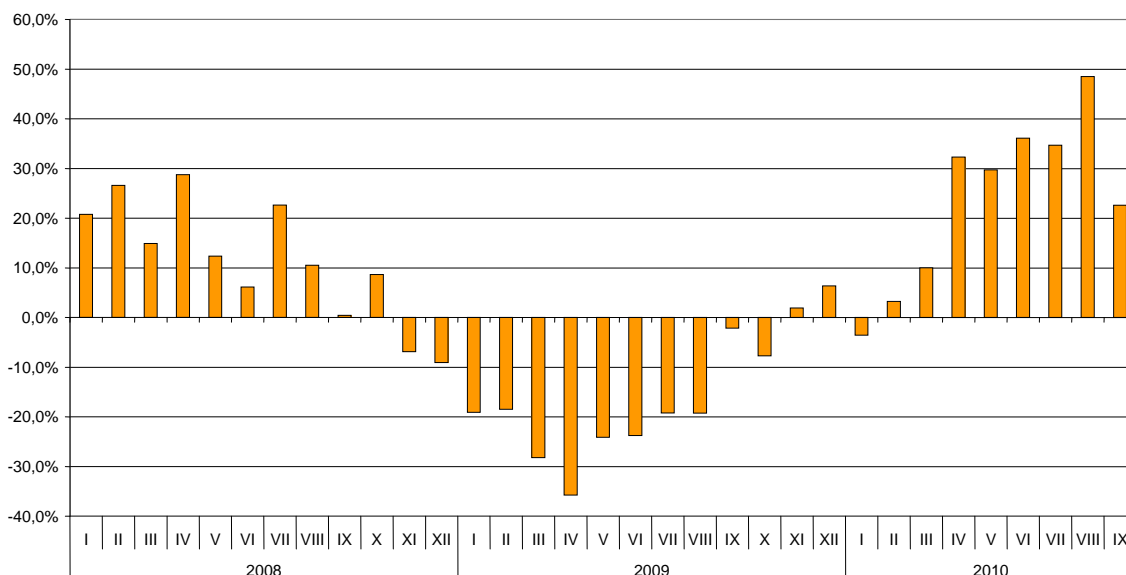


BULGARIAN TRADE WITH EU FOR THE PERIOD JANUARY - SEPTEMBER 2010 (PRELIMINARY DATA)

In the period January - September 2010 the Bulgarian **exports** to the **EU** increased by 23.9% compared to the corresponding period of the previous year and amounted to 13.4 billion leva (Table 1.1 and 1.2). The main trade partners of Bulgaria were Germany, Italy, Romania and Greece that formed 61.4% of the total exports to the EU Member states (Table.2). The exports to Italy increased by 39.9% and those to Germany by 23.3%. The most significant growths were observed in the exports to Luxembourg, Estonia and Slovenia. The exports to Denmark and Czech Republic reported growths by 61.6% and 56.7% respectively. The most notable falls were registered in the exports to Cyprus and Belgium.

In September 2010 the exports to the EU increased by 22.6% compared to the corresponding month of the previous year and reached to 1.7 billion leva.

**Figure 1. Nominal growth of exports to EU for the period 2008 - 2010
(Compared to the same month of the previous year)**

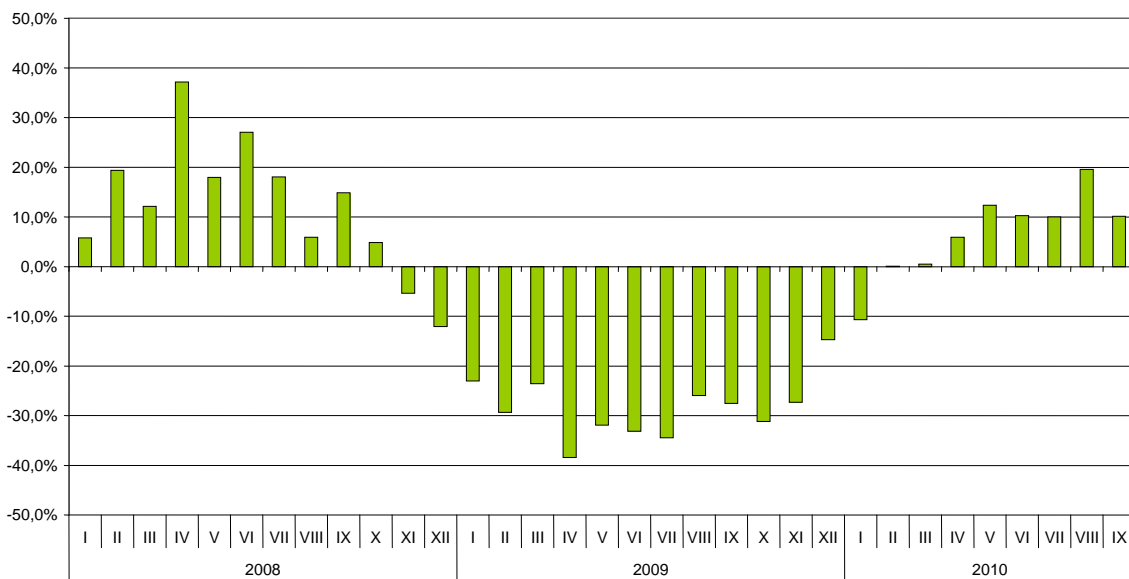


Bulgarian **imports from the EU** in the period January - September 2010 increased by 6.6% compared to the corresponding period of the previous year and amounted to 15.5 billion leva (Tables 1.1 and 1.2). The most significant growths were reported on the imports from Portugal (by 92.9%) and Lithuania (57.3%) (Table 2). The largest decreases were observed in the imports from Estonia, Czech Republic and Cyprus.



In September 2010 the Bulgarian **imports** from the **EU Member States** increased by 10.1% compared to the corresponding month of the previous year and amounted to 1.9 billion levs.

**Figure 2. Nominal growth of imports from EU for the period 2008 - 2010
(Compared to the same month of the previous year)**



The foreign trade balance of Bulgaria (export FOB - import CIF) with **EU** in the period January – September 2010 was negative and amounted to 2 billion levs (Table 1.1).

The **exports** of Bulgaria to the **EU** distributed according to the **Standard International Trade Classification** showed that in the first nine months of 2010 more goods were exported from the prevailing part of the sections compared to the corresponding period of 2009 (Table 3). The largest growths were recorded in the sections “Crude materials, inedible (except fuel) ¹”, “Machinery and transport equipment” and “Chemical and related products”. A fall was observed only in exports of one section – „Beverages and tobacco”.

The largest growths on **imports** from the **EU** were reported in sections “Crude materials, inedible (except fuel)” and “Mineral fuel, lubricants and related materials” and the lowest in section “Machinery and transport equipment”.

¹ The section includes the following divisions: raw hides, skins and furskins; oil-seeds and oleaginous fruits; crude rubber; cork and wood; pulp and waste paper; textile fibres and their wastes; crude fertilizers and crude minerals; metalliferous ores and metal scrap; crude animal and vegetable materials, n.e.s.

ANNEX

Table 1.1

EXPORTS, IMPORTS AND TRADE BALANCE FOR THE PERIOD JANUARY- SEPTEMBER 2009 AND 2010¹ BY MONTHS

(Million Levs)

| Months | Exports - FOB | | | Imports - CIF | | | Imports - FOB ² | | | Trade balance - FOB/CIF | | | Trade balance - FOB/FOB ² | | |
|---------------------|----------------|----------------|---------------|----------------|----------------|----------------|----------------------------|----------------|----------------|-------------------------|----------------|----------------|--------------------------------------|----------------|----------------|
| | Total | EU | Non EU | Total | EU | Non EU | Total | EU | Non EU | Total | EU | Non EU | Total | EU | Non EU |
| I.2009 | 1592.0 | 1113.0 | 479.0 | 2402.5 | 1423.7 | 978.8 | 2246.0 | 1348.8 | 897.2 | -810.5 | -310.7 | -499.8 | -654.0 | -235.8 | -418.2 |
| II.2009 | 1761.9 | 1221.6 | 540.3 | 2591.2 | 1530.8 | 1060.4 | 2435.9 | 1450.3 | 985.6 | -829.3 | -309.2 | -520.1 | -674.0 | -228.7 | -445.3 |
| III.2009 | 1844.9 | 1172.8 | 672.1 | 2942.5 | 1769.0 | 1173.5 | 2777.2 | 1678.6 | 1098.6 | -1097.6 | -596.2 | -501.4 | -932.3 | -505.8 | -426.5 |
| I - III.2009 | 5198.8 | 3507.4 | 1691.4 | 7936.2 | 4723.5 | 3212.7 | 7459.1 | 4477.7 | 2981.4 | -2737.4 | -1216.1 | -1521.3 | -2260.3 | -970.3 | -1290.0 |
| IV.2009 | 1628.8 | 1000.5 | 628.3 | 2709.2 | 1570.4 | 1138.8 | 2551.2 | 1490.9 | 1060.3 | -1080.4 | -569.9 | -510.5 | -922.4 | -490.4 | -432.0 |
| V.2009 | 1771.5 | 1126.6 | 644.9 | 2797.8 | 1645.2 | 1152.6 | 2630.8 | 1560.4 | 1070.4 | -1026.3 | -518.6 | -507.7 | -859.3 | -433.8 | -425.5 |
| VI.2009 | 1955.0 | 1205.9 | 749.1 | 2799.7 | 1735.3 | 1064.4 | 2632.6 | 1644.9 | 987.7 | -844.7 | -529.4 | -315.3 | -677.6 | -439.0 | -238.6 |
| IV - VI.2009 | 5355.3 | 3333.0 | 2022.3 | 8306.7 | 4950.9 | 3355.8 | 7814.6 | 4696.2 | 3118.4 | -2951.4 | -1617.9 | -1333.5 | -2459.3 | -1363.2 | -1096.1 |
| I - VI.2009 | 10554.1 | 6840.4 | 3713.7 | 16242.9 | 9674.4 | 6568.5 | 15273.7 | 9173.9 | 6099.8 | -5688.8 | -2834.0 | -2854.8 | -4719.6 | -2333.5 | -2386.1 |
| VII.2009 | 2012.9 | 1425.3 | 587.6 | 2803.8 | 1664.1 | 1139.7 | 2640.0 | 1577.7 | 1062.3 | -790.9 | -238.8 | -552.1 | -627.1 | -152.4 | -474.7 |
| VIII.2009 | 1920.4 | 1195.0 | 725.4 | 2582.8 | 1463.9 | 1118.9 | 2423.3 | 1388.6 | 1034.7 | -662.4 | -268.9 | -393.5 | -502.9 | -193.6 | -309.3 |
| IX.2009 | 2043.4 | 1372.1 | 671.3 | 2747.3 | 1724.4 | 1022.9 | 2587.2 | 1637.9 | 949.3 | -703.9 | -352.3 | -351.6 | -543.8 | -265.8 | -278.0 |
| VII-IX.2009 | 5976.7 | 3992.4 | 1984.3 | 8133.9 | 4852.4 | 3281.5 | 7650.5 | 4604.2 | 3046.3 | -2157.2 | -860.0 | -1297.2 | -1673.8 | -611.8 | -1062.0 |
| I - IX.2009 | 16530.8 | 10832.8 | 5698.0 | 24376.8 | 14526.8 | 9850.0 | 22924.2 | 13778.1 | 9146.1 | -7846.0 | -3694.0 | -4152.0 | -6393.4 | -2945.3 | -3448.1 |
| I.2010 | 1800.0 | 1073.2 | 726.8 | 2264.0 | 1271.6 | 992.4 | 2130.0 | 1205.7 | 924.3 | -464.0 | -198.4 | -265.6 | -330.0 | -132.5 | -197.5 |
| II.2010 | 1960.8 | 1260.7 | 700.1 | 2297.1 | 1531.6 | 765.5 | 2154.6 | 1441.9 | 712.7 | -336.3 | -270.9 | -65.4 | -193.8 | -181.2 | -12.6 |
| III.2010 | 2208.9 | 1289.9 | 919.0 | 2962.0 | 1777.4 | 1184.6 | 2791.3 | 1691.2 | 1100.1 | -753.1 | -487.5 | -265.6 | -582.4 | -401.3 | -181.1 |
| I - III.2010 | 5969.7 | 3623.8 | 2345.9 | 7523.1 | 4580.6 | 2942.5 | 7075.9 | 4338.8 | 2737.1 | -1553.4 | -956.8 | -596.6 | -1106.2 | -715.0 | -391.2 |
| IV.2010 | 2309.0 | 1323.4 | 985.6 | 3063.4 | 1663.4 | 1400.0 | 2884.6 | 1582.2 | 1302.4 | -754.4 | -340.0 | -414.4 | -575.6 | -258.8 | -316.8 |
| V.2010 | 2364.8 | 1461.5 | 903.3 | 3215.7 | 1847.8 | 1367.9 | 3018.4 | 1750.7 | 1267.7 | -850.9 | -386.3 | -464.6 | -653.6 | -289.2 | -364.4 |
| VI.2010 | 2757.5 | 1640.9 | 1116.6 | 3259.0 | 1912.9 | 1346.1 | 3060.3 | 1813.9 | 1246.4 | -501.5 | -272.0 | -229.5 | -302.8 | -173.0 | -129.8 |
| IV - VI.2010 | 7431.3 | 4425.8 | 3005.5 | 9538.1 | 5424.1 | 4114.0 | 8963.3 | 5146.8 | 3816.5 | -2106.8 | -998.3 | -1108.5 | -1532.0 | -721.0 | -811.0 |
| I - VI.2010 | 13401.0 | 8049.6 | 5351.4 | 17061.2 | 10004.7 | 7056.5 | 16039.2 | 9485.6 | 6553.6 | -3660.2 | -1955.1 | -1705.1 | -2638.2 | -1436.0 | -1202.2 |
| VII.2010 | 2961.2 | 1919.4 | 1041.8 | 3260.3 | 1830.4 | 1429.9 | 3051.7 | 1733.9 | 1317.8 | -299.1 | 89.0 | -388.1 | -90.5 | 185.5 | -276.0 |
| VIII.2010 | 2842.0 | 1774.5 | 1067.5 | 2987.3 | 1750.3 | 1237.0 | 2809.2 | 1660.5 | 1148.7 | -145.3 | 24.2 | -169.5 | 32.8 | 114.0 | -81.2 |
| IX.2010 | 2803.9 | 1682.0 | 1121.9 | 3164.3 | 1899.0 | 1265.3 | 2978.1 | 1804.5 | 1173.6 | -360.4 | -217.0 | -143.4 | -174.2 | -122.5 | -51.7 |
| VII-IX.2010 | 8607.1 | 5375.9 | 3231.2 | 9411.9 | 5479.7 | 3932.2 | 8839.0 | 5198.9 | 3640.1 | -804.8 | -103.8 | -701.0 | -231.9 | 177.0 | -408.9 |
| I - IX.2010 | 22008.1 | 13425.5 | 8582.6 | 26473.1 | 15484.4 | 10988.7 | 24878.2 | 14684.5 | 10193.7 | -4465.0 | -2058.9 | -2406.1 | -2870.1 | -1259.0 | -1611.1 |

¹ Data are preliminary as of 9.12.2010.

² By data of BNB for the transport costs.



Table 1.2

GROWTH OF EXPORTS AND IMPORTS FOR THE PERIOD JANUARY - SEPTEMBER 2010¹ COMPARED TO THE SAME MONTH OF THE PREVIOUS YEAR

(Per cent)

| Months | Exports - FOB | | | Imports - CIF | | | Imports - FOB | | |
|-----------------|---------------|-------------|-------------|---------------|-------------|-------------|---------------|-------------|-------------|
| | Total | EU | Non EU | Total | EU | Non EU | Total | EU | Non EU |
| I | 13,1 | -3,6 | 51,7 | -5,8 | -10,7 | 1,4 | -5,2 | -10,6 | 3,0 |
| II | 11,3 | 3,2 | 29,6 | -11,3 | 0,1 | -27,8 | -11,5 | -0,6 | -27,7 |
| III | 19,7 | 10,0 | 36,7 | 0,7 | 0,5 | 0,9 | 0,5 | 0,8 | 0,1 |
| I - III | 14,8 | 3,3 | 38,7 | -5,2 | -3,0 | -8,4 | -5,1 | -3,1 | -8,2 |
| IV | 41,8 | 32,3 | 56,9 | 13,1 | 5,9 | 22,9 | 13,1 | 6,1 | 22,8 |
| V | 33,5 | 29,7 | 40,1 | 14,9 | 12,3 | 18,7 | 14,7 | 12,2 | 18,4 |
| VI | 41,0 | 36,1 | 49,1 | 16,4 | 10,2 | 26,5 | 16,2 | 10,3 | 26,2 |
| IV - VI | 38,8 | 32,8 | 48,6 | 14,8 | 9,6 | 22,6 | 14,7 | 9,6 | 22,4 |
| I - VI | 27,0 | 17,7 | 44,1 | 5,0 | 3,4 | 7,4 | 5,0 | 3,4 | 7,4 |
| VII | 47,1 | 34,7 | 77,3 | 16,3 | 10,0 | 25,5 | 15,6 | 9,9 | 24,1 |
| VIII | 48,0 | 48,5 | 47,2 | 15,7 | 19,6 | 10,6 | 15,9 | 19,6 | 11,0 |
| IX | 37,2 | 22,6 | 67,1 | 15,2 | 10,1 | 23,7 | 15,1 | 10,2 | 23,6 |
| VII - IX | 44,0 | 34,7 | 62,8 | 15,7 | 12,9 | 19,8 | 15,5 | 12,9 | 19,5 |
| I - IX | 33,1 | 23,9 | 50,6 | 8,6 | 6,6 | 11,6 | 8,5 | 6,6 | 11,5 |



Table 2

EXPORTS, IMPORTS AND TRADE BALANCE BY GROUPS OF COUNTRIES AND MAIN TRADE PARTNERS ¹
FOR THE PERIOD JANUARY - SEPTEMBER 2009 AND 2010²

(Million Levs)

| Countries and groups of countries | Exports - FOB | | | Imports - CIF | | | Trade balance - FOB/CIF | |
|---|----------------|----------------|-------------|----------------|----------------|-------------|-------------------------|----------------|
| | 2009 | 2010 | Growth - % | 2009 | 2010 | Growth - % | 2009 | 2010 |
| Total | 16530.8 | 22008.1 | 33.1 | 24376.8 | 26473.1 | 8.6 | -7846.0 | -4465.0 |
| EU | 10832.8 | 13425.5 | 23.9 | 14526.8 | 15484.4 | 6.6 | -3694.0 | -2058.9 |
| Austria | 325.7 | 399.8 | 22.8 | 936.9 | 939.3 | 0.3 | -611.2 | -539.5 |
| Belgium | 988.4 | 911.5 | -7.8 | 411.1 | 526.1 | 28.0 | 577.3 | 385.4 |
| Cyprus | 71.0 | 63.8 | -10.1 | 43.0 | 35.9 | -16.5 | 28.0 | 27.9 |
| Czech Republic | 129.2 | 202.4 | 56.7 | 609.3 | 507.6 | -16.7 | -480.1 | -305.2 |
| Denmark | 47.7 | 77.1 | 61.6 | 150.6 | 132.0 | -12.4 | -102.9 | -54.9 |
| Estonia | 4.9 | 14.1 | 187.8 | 10.4 | 5.5 | -47.1 | -5.5 | 8.6 |
| Finland | 26.1 | 36.0 | 37.9 | 138.4 | 123.4 | -10.8 | -112.3 | -87.4 |
| France | 749.0 | 853.3 | 13.9 | 875.8 | 851.3 | -2.8 | -126.8 | 2.0 |
| Germany | 1851.6 | 2283.1 | 23.3 | 3091.3 | 3100.4 | 0.3 | -1239.7 | -817.3 |
| Greece | 1578.8 | 1790.1 | 13.4 | 1484.6 | 1574.6 | 6.1 | 94.2 | 215.5 |
| Hungary | 183.8 | 272.8 | 48.4 | 791.2 | 836.9 | 5.8 | -607.4 | -564.1 |
| Ireland | 12.3 | 12.8 | 4.1 | 71.9 | 75.0 | 4.3 | -59.6 | -62.2 |
| Italy | 1588.4 | 2222.4 | 39.9 | 1870.5 | 1884.0 | 0.7 | -282.1 | 338.4 |
| Latvia | 16.8 | 22.2 | 32.1 | 10.1 | 12.5 | 23.8 | 6.7 | 9.7 |
| Lithuania | 29.1 | 33.9 | 16.5 | 24.8 | 39.0 | 57.3 | 4.3 | -5.1 |
| Luxembourg | 10.1 | 32.8 | 224.8 | 18.2 | 18.3 | 0.5 | -8.1 | 14.5 |
| Malta | 8.2 | 8.7 | 6.1 | 8.4 | 12.0 | 42.9 | -0.2 | -3.3 |
| Netherlands | 258.7 | 320.9 | 24.0 | 646.0 | 738.2 | 14.3 | -387.3 | -417.3 |
| Poland | 259.1 | 360.6 | 39.2 | 552.0 | 547.3 | -0.9 | -292.9 | -186.7 |
| Portugal | 55.9 | 64.2 | 14.8 | 49.3 | 95.1 | 92.9 | 6.6 | -30.9 |
| Romania | 1493.8 | 1942.5 | 30.0 | 1313.7 | 1848.0 | 40.7 | 180.1 | 94.5 |
| Slovakia | 136.8 | 158.9 | 16.2 | 259.8 | 284.5 | 9.5 | -123.0 | -125.6 |
| Slovenia | 77.3 | 206.0 | 166.5 | 204.1 | 201.0 | -1.5 | -126.8 | 5.0 |
| Spain | 492.4 | 596.7 | 21.2 | 401.0 | 543.0 | 35.4 | 91.4 | 53.7 |
| Sweden | 96.1 | 106.4 | 10.7 | 144.0 | 126.5 | -12.2 | -47.9 | -20.1 |
| United Kingdom | 331.4 | 423.4 | 27.8 | 333.1 | 404.1 | 21.3 | -1.7 | 19.3 |
| Not specified | 10.2 | 9.1 | -10.8 | 77.3 | 22.9 | -70.4 | -67.1 | -13.8 |
| Non EU countries | 5698.0 | 8582.6 | 50.6 | 9850.0 | 10988.7 | 11.6 | -4152.0 | -2406.1 |
| Central and Eastern European countries | 3271.2 | 4618.0 | 41.2 | 4229.6 | 4961.0 | 17.3 | -958.4 | -343.0 |
| of which: | | | | | | | | |
| Albania | 91.6 | 88.8 | -3.1 | 5.6 | 16.0 | 185.7 | 86.0 | 72.8 |
| Bosnia and Herzegovina | 53.3 | 44.7 | -16.1 | 6.7 | 10.1 | 50.7 | 46.6 | 34.6 |
| Croatia | 110.1 | 135.7 | 23.3 | 55.2 | 43.2 | -21.7 | 54.9 | 92.5 |
| Serbia | 463.2 | 796.5 | 72.0 | 197.3 | 292.2 | 48.1 | 265.9 | 504.3 |
| The former Yugoslav Rep. of Macedonia | 335.7 | 446.9 | 33.1 | 254.6 | 364.7 | 43.2 | 81.1 | 82.2 |
| CIS | 830.3 | 1209.0 | 45.6 | 4968.4 | 5620.9 | 13.1 | -4138.1 | -4411.9 |
| of which: | | | | | | | | |
| Georgia | 128.2 | 184.9 | 44.2 | 317.5 | 231.5 | -27.1 | -189.3 | -46.6 |
| Kazakhstan | 24.9 | 26.8 | 7.6 | 60.1 | 6.8 | -88.7 | -35.2 | 20.0 |
| Russian Fed. | 399.5 | 615.0 | 53.9 | 3361.6 | 4219.1 | 25.5 | -2962.1 | -3604.1 |
| Ukraine | 142.0 | 208.5 | 46.8 | 1172.3 | 1093.5 | -6.7 | -1030.3 | -885.0 |



| OECD | 1679.8 | 2560.5 | 52.4 | 2128.2 | 2168.4 | 1.9 | -448.4 | 392.1 |
|-------------------------------|--------------|--------------|-------------|--------------|--------------|-------------|---------------|--------------|
| of which: | | | | | | | | |
| Canada | 37.9 | 40.0 | 5.5 | 79.9 | 52.8 | -33.9 | -42.0 | -12.8 |
| Japan | 22.5 | 25.1 | 11.6 | 131.0 | 96.7 | -26.2 | -108.5 | -71.6 |
| Korea, Rep. of | 28.0 | 129.5 | 362.5 | 73.2 | 73.9 | 1.0 | -45.2 | 55.6 |
| Turkey | 1130.3 | 1867.2 | 65.2 | 1332.4 | 1472.2 | 10.5 | -202.1 | 395.0 |
| USA | 264.2 | 280.5 | 6.2 | 228.6 | 200.2 | -12.4 | 35.6 | 80.3 |
| EFTA | 158.4 | 178.6 | 12.8 | 266.0 | 255.2 | -4.1 | -107.6 | -76.6 |
| of which: | | | | | | | | |
| Norway | 33.8 | 33.7 | -0.3 | 35.4 | 9.7 | -72.6 | -1.6 | 24.0 |
| Switzerland | 119.4 | 139.5 | 16.8 | 218.2 | 239.0 | 9.5 | -98.8 | -99.5 |
| Countries not included | | | | | | | | |
| in the upper groups | | | | | | | | |
| Brazil | 17.4 | 39.2 | 125.3 | 203.7 | 130.3 | -36.0 | -186.3 | -91.1 |
| China | 78.2 | 278.7 | 256.4 | 692.4 | 700.3 | 1.1 | -614.2 | -421.6 |
| Egypt | 150.7 | 160.6 | 6.6 | 30.4 | 88.6 | 191.4 | 120.3 | 72.0 |
| India | 24.6 | 57.6 | 134.1 | 60.8 | 74.3 | 22.2 | -36.2 | -16.7 |
| Indonesia | 23.9 | 21.8 | -8.8 | 25.9 | 24.1 | -6.9 | -2.0 | -2.3 |
| Iran | 45.7 | 79.0 | 72.9 | 10.3 | 8.6 | -16.5 | 35.4 | 70.4 |
| Israel | 62.1 | 93.6 | 50.7 | 40.5 | 169.7 | 319.0 | 21.6 | -76.1 |
| Peru | 0.8 | 7.8 | 875.0 | 182.8 | 303.7 | 66.1 | -182.0 | -295.9 |
| Singapore | 306.8 | 355.8 | 16.0 | 15.0 | 8.7 | -42.0 | 291.8 | 347.1 |
| South Africa | 7.3 | 10.1 | 38.4 | 68.2 | 15.4 | -77.4 | -60.9 | -5.3 |
| Syria | 75.6 | 110.1 | 45.6 | 57.4 | 47.0 | -18.1 | 18.2 | 63.1 |
| Taiwan | 14.8 | 28.1 | 89.9 | 64.0 | 87.8 | 37.2 | -49.2 | -59.7 |
| United Arab Emirates | 80.5 | 53.6 | -33.4 | 19.5 | 21.2 | 8.7 | 61.0 | 32.4 |
| Viet Nam | 14.9 | 32.3 | 116.8 | 62.0 | 47.8 | -22.9 | -47.1 | -15.5 |

¹ Partner country:

- In case of exports (or dispatches) is the country (or Member State) of final destination of the goods
- In case of imports (or arrivals) is the country (or Member State) of consignment of the goods.

² Data are preliminary as of 9.12.2010.



Table 3

EXPORTS, IMPORTS AND TRADE BALANCE BY SECTIONS OF SITC, rev.4
FOR THE PERIOD JANUARY -SEPTEMBER 2009 AND 2010¹

(Million Levs)

| Sections by SITC | Exports - FOB | | | Imports - CIF | | | Trade balance - FOB/CIF | |
|---|----------------|----------------|-------------|----------------|----------------|------------|-------------------------|----------------|
| | 2009 | 2010 | Growth -% | 2009 | 2010 | Growth -% | 2009 | 2010 |
| Total | 16530,8 | 22008,1 | 33,1 | 24376,8 | 26473,1 | 8,6 | -7846,0 | -4465,0 |
| of which EU | 10832,8 | 13425,5 | 23,9 | 14526,8 | 15484,4 | 6,6 | -3694,0 | -2058,9 |
| Food and live animals | 1704,0 | 2245,6 | 31,8 | 1941,5 | 2044,4 | 5,3 | -237,5 | 201,2 |
| of which EU | 1304,0 | 1688,8 | 29,5 | 1445,0 | 1619,8 | 12,1 | -141,0 | 69,0 |
| Beverages and tobacco | 453,4 | 481,4 | 6,2 | 370,4 | 378,8 | 2,3 | 83,0 | 102,6 |
| of which EU | 254,9 | 211,2 | -17,1 | 260,5 | 259,9 | -0,2 | -5,6 | -48,7 |
| Crude materials, inedible (except fuel) | 1112,5 | 1898,2 | 70,6 | 1629,9 | 2279,7 | 39,9 | -517,4 | -381,5 |
| of which EU | 663,7 | 1056,6 | 59,2 | 395,8 | 807,4 | 104,0 | 267,9 | 249,2 |
| Mineral fuel, lubricants and related materials | 2102,4 | 2975,2 | 41,5 | 4867,0 | 5885,4 | 20,9 | -2764,6 | -2910,2 |
| of which EU | 697,9 | 831,9 | 19,2 | 685,9 | 907,8 | 32,4 | 12,0 | -75,9 |
| Animals and vegetable oils, fats and waxes | 114,4 | 125,0 | 9,3 | 101,1 | 115,8 | 14,5 | 13,3 | 9,2 |
| of which EU | 83,0 | 93,2 | 12,3 | 66,4 | 83,7 | 26,1 | 16,6 | 9,5 |
| Chemical and related products n.e.c. | 1293,6 | 1744,7 | 34,9 | 2704,1 | 3196,5 | 18,2 | -1410,5 | -1451,8 |
| of which EU | 531,4 | 693,8 | 30,6 | 2165,6 | 2571,2 | 18,7 | -1634,2 | -1877,4 |
| Manufactured goods classified chiefly by material | 3816,1 | 5234,1 | 37,2 | 4222,4 | 4491,5 | 6,4 | -406,3 | 742,6 |
| of which EU | 2590,3 | 3272,1 | 26,3 | 2804,1 | 2920,1 | 4,1 | -213,8 | 352,0 |
| Machinery and transport equipment | 2788,1 | 3653,6 | 31,0 | 6560,2 | 6032,9 | -8,0 | -3772,1 | -2379,3 |
| of which EU | 2023,9 | 2644,0 | 30,6 | 5208,9 | 4749,8 | -8,8 | -3185,0 | -2105,8 |
| Miscellaneous manufactured articles | 3128,2 | 3627,0 | 15,9 | 1922,8 | 1977,3 | 2,8 | 1205,4 | 1649,7 |
| of which EU | 2679,0 | 2926,5 | 9,2 | 1445,0 | 1505,7 | 4,2 | 1234,0 | 1420,8 |
| Commodities and transactions n.e.c. | 18,1 | 23,3 | 28,7 | 57,4 | 70,8 | 23,3 | -39,3 | -47,5 |
| of which EU | 4,7 | 7,4 | 57,4 | 49,6 | 59,0 | 19,0 | -44,9 | -51,6 |

¹ Data are preliminary as of 9.12.2010.