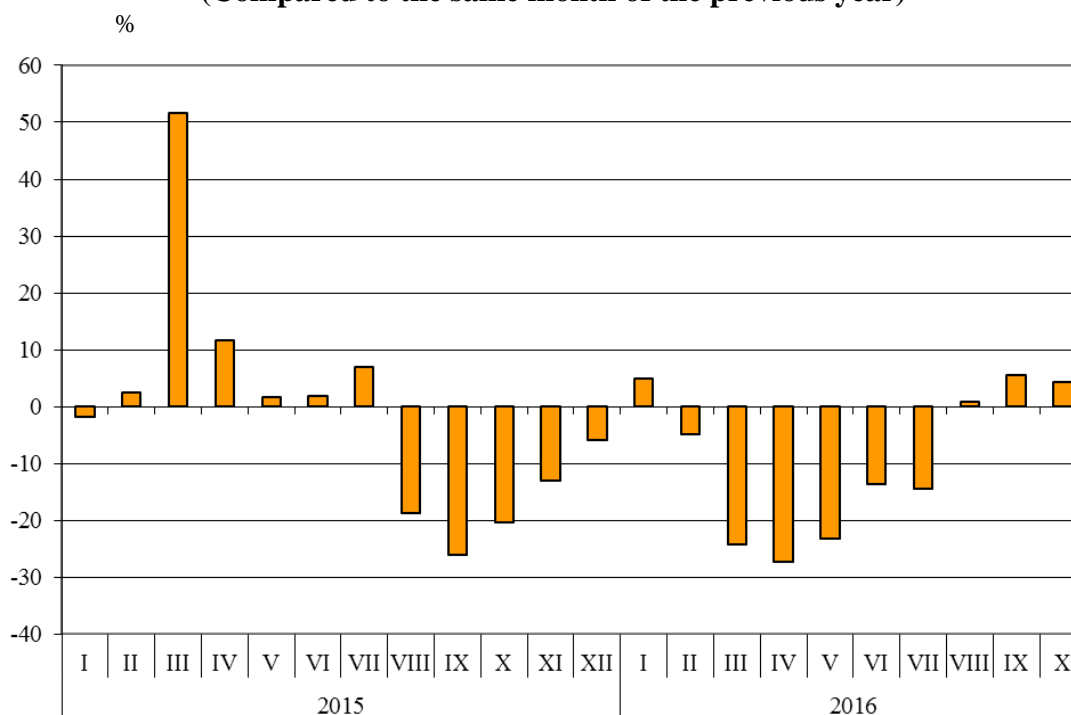


## BULGARIAN TRADE WITH THIRD COUNTRIES IN THE PERIOD JANUARY - OCTOBER 2016 (PRELIMINARY DATA)

In the period **January - October 2016** Bulgarian **exports to third countries** decreased by 10.6% in comparison with the same period of 2015 and amounted to 11 973.0 Million BGN (Annex, Table 1 and 2). Main trade partners of Bulgaria were Turkey, the Former Yugoslav Republic of Macedonia, Serbia, China, Russian Federation and USA, which accounted for 49.2% of the exports to non-EU countries (Annex, Table 3).

**In October 2016** Bulgarian **exports to third countries** increased by 4.4% compared to the corresponding month of the previous year and added up to 1 264.7 Million BGN.

**Figure 1. Nominal value<sup>1</sup> change of exports of Bulgaria to non-EU countries  
in the period 2015 - 2016  
(Compared to the same month of the previous year)**



In the ten months of 2016 compared to the same period of 2015 in the exports of Bulgaria to third countries distributed according to the **Standard International Trade Classification** the largest growth was recorded in the section 'Miscellaneous manufactured articles'<sup>2</sup> (29.9%) (Annex, Table 4). The most notable fall was reported in section 'Beverages and tobacco' (24.5%).

<sup>1</sup> Value changes at current prices.

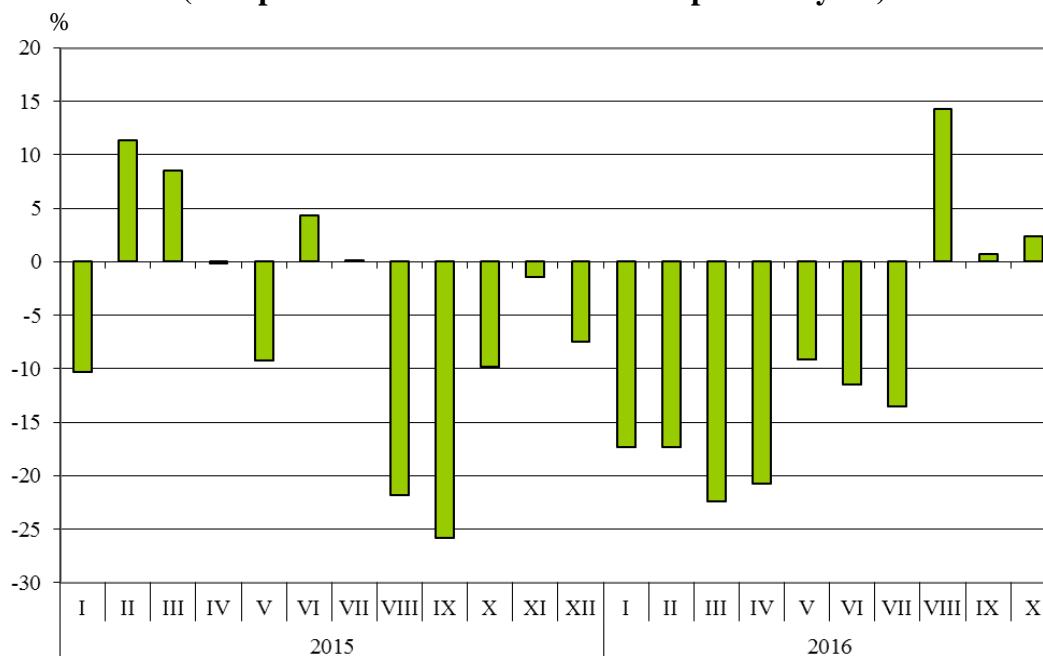
<sup>2</sup> The section includes the following divisions: Prefabricated buildings; sanitary, plumbing, heating and lighting fixtures and fittings, Furniture and parts thereof; bedding, mattresses, mattress supports, cushions and similar stuffed furnishings, Travel goods, handbags and similar containers, Articles of apparel and clothing accessories, Footwear, Professional, scientific and controlling instruments and apparatus, Photographic apparatus, equipment and supplies and optical goods, n.e.s.; watches and clocks, Miscellaneous manufactured articles, n.e.s.



**Bulgarian imports from third countries** in the period **January - October 2016** decreased by 9.8% in comparison with the same period of 2015 and added up to 13 912.2 Million BGN (at CIF prices) (Annex, Tables 1 and 2). The largest amounts were reported for the goods imported from the Russian Federation, Turkey, China and Ukraine (Annex, Table 3).

**In October 2016** Bulgarian imports from third countries increased by 2.4% compared to the corresponding month of the previous year and amounted to 1 585.7 Million BGN.

**Figure 2. Nominal value<sup>1</sup> change of imports of Bulgaria to non-EU countries in the period 2015 - 2016 (Compared to the same month of the previous year)**



In the ten months of 2016 compared to the corresponding period of 2015 in the imports of Bulgaria from third countries distributed according to the **Standard International Trade Classification** the largest growth was recorded in the section 'Miscellaneous manufactured articles' (15.3%) while the most notable fall was observed in section 'Mineral fuel, lubricants and related materials' (26.4%).

<sup>1</sup> Value changes at current prices.



The foreign trade balance of Bulgaria (export FOB - import CIF) with third countries in the period **January - October 2016** was negative and added up to 1 939.2 Million BGN (Annex, Table 1). The trade balance at FOB/FOB prices (after elimination of transport and insurance costs on imports) was also negative and amounted to 1 252.7 Million BGN.

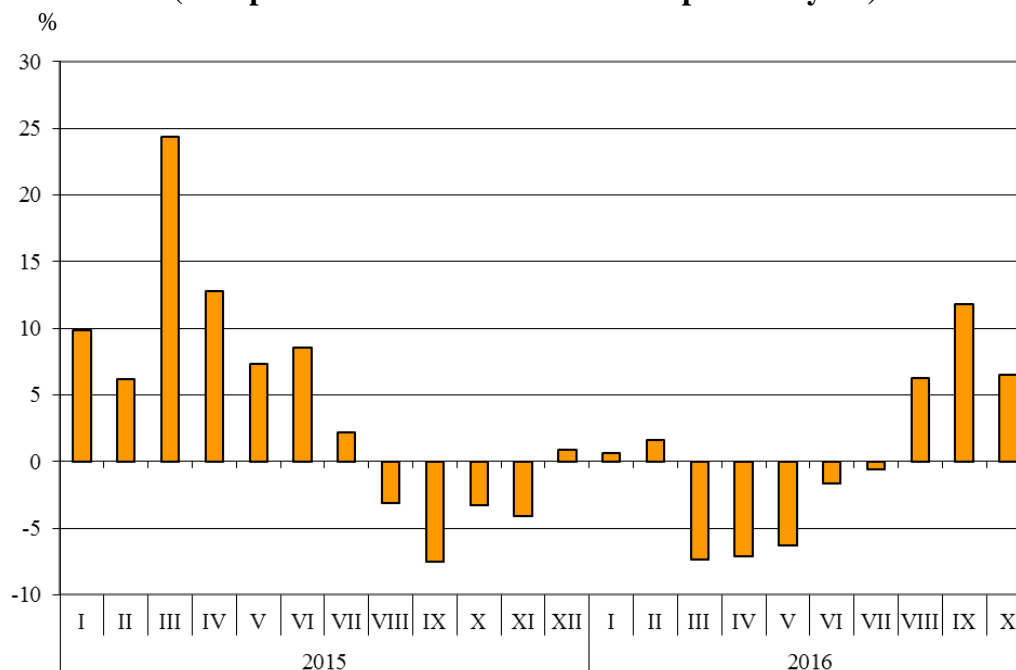
**In October 2016** the foreign trade balance of Bulgaria (export FOB - import CIF) with third countries was negative and added up to 321.0 Million BGN.

### Bulgarian trade with third countries and EU - total

In the period **January - October 2016** the value of **all exported goods** from Bulgaria amounted to 37 895.9 Million BGN and in comparison with the corresponding period of 2015 the exports increased by 0.2% (Annex, Table 1 and 2).

**In October 2016** the **total exports** added up to 4 153.1 Million BGN or by 6.5% more than the same month of the previous year.

**Figure 3. Nominal value<sup>1</sup> change of exports of Bulgaria in the period 2015 - 2016  
(Compared to the same month of the previous year)**



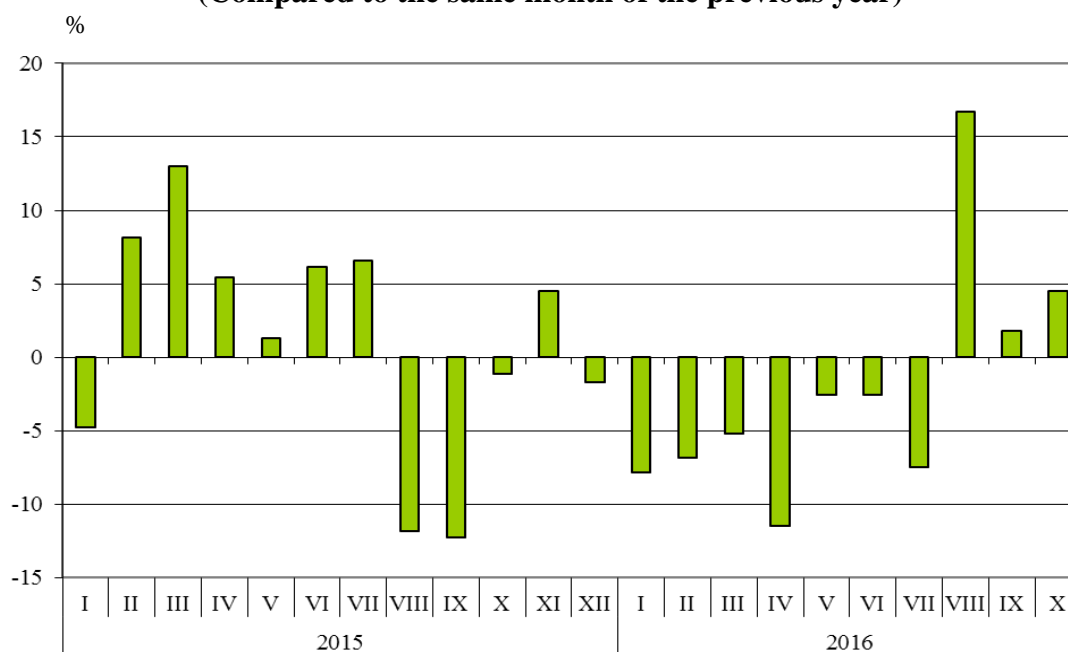
<sup>1</sup> Value changes at current prices.



The total value of **all the goods imported** in the country in the period **January - October 2016** amounted to 41 685.7 Million BGN (at CIF prices), or by 2.3% less than the corresponding period of 2015 (Annex, Table 1 and 2).

In **October 2016** the **total imports** increased by 4.5% compared to the same month of the previous year and added up to 4 822.5 Million BGN.

**Figure 4. Nominal value<sup>1</sup> change of imports of Bulgaria in the period 2015 - 2016**  
(Compared to the same month of the previous year)



The **total foreign trade balance** (exports FOB - import CIF) was negative in the period **January - October 2016** and amounted to 3 789.8 Million BGN (Annex, Table 1 and 2). At FOB/FOB prices (after elimination of transport and insurance costs on imports) in the period January - October 2016 the total foreign trade balance was also negative and added up 1 793.4 Million BGN.

In **October 2016** the total foreign trade balance (exports FOB - import CIF) was negative and amounted to 669.4 Million BGN. The trade balance at FOB/FOB prices was also negative and added up 431.9 Million BGN.

<sup>1</sup> Value changes at current prices.

Table 1

Exports, imports and trade balance of Bulgaria in the period January - October 2015 and 2016<sup>1</sup> by months

(Million BGN)

Months/Periods	Exports - FOB			Imports - CIF			Imports - FOB <sup>2</sup>			Trade balance - FOB/CIF			Trade balance - FOB/FOB <sup>2</sup>		
	Total	EU	Non EU	Total	EU	Non EU	Total	EU	Non EU	Total	EU	Non EU	Total	EU	Non EU
I.2015	3404.9	2296.0	1108.9	3767.8	2312.0	1455.8	3579.5	2199.6	1379.9	-362.9	-16.0	-346.9	-174.6	96.4	-271.0
II.2015	3427.4	2171.8	1255.6	4104.7	2624.7	1480.0	3904.3	2499.7	1404.6	-677.3	-452.9	-224.4	-476.9	-327.9	-149.0
III.2015	3971.6	2422.7	1548.9	4447.0	2886.1	1560.9	4239.8	2753.7	1486.1	-475.4	-463.4	-12.0	-268.2	-331.0	62.8
<b>I - III.2015</b>	<b>10803.9</b>	<b>6890.5</b>	<b>3913.4</b>	<b>12319.5</b>	<b>7822.8</b>	<b>4496.7</b>	<b>11723.6</b>	<b>7453.0</b>	<b>4270.6</b>	<b>-1515.6</b>	<b>-932.3</b>	<b>-583.3</b>	<b>-919.7</b>	<b>-562.5</b>	<b>-357.2</b>
IV.2015	3912.2	2403.4	1508.8	4537.2	2866.8	1670.4	4313.3	2728.0	1585.3	-625.0	-463.4	-161.6	-401.1	-324.6	-76.5
V.2015	3755.0	2297.2	1457.8	4185.7	2583.3	1602.4	3984.9	2464.5	1520.4	-430.7	-286.1	-144.6	-229.9	-167.3	-62.6
VI.2015	4022.8	2562.3	1460.5	4423.1	2830.3	1592.8	4213.6	2699.1	1514.5	-400.3	-268.0	-132.3	-190.8	-136.8	-54.0
<b>IV - VI.2015</b>	<b>11690.0</b>	<b>7262.9</b>	<b>4427.1</b>	<b>13146.0</b>	<b>8280.4</b>	<b>4865.6</b>	<b>12511.8</b>	<b>7891.6</b>	<b>4620.2</b>	<b>-1456.0</b>	<b>-1017.5</b>	<b>-438.5</b>	<b>-821.8</b>	<b>-628.7</b>	<b>-193.1</b>
<b>I - VI.2015</b>	<b>22493.9</b>	<b>14153.4</b>	<b>8340.5</b>	<b>25465.5</b>	<b>16103.2</b>	<b>9362.3</b>	<b>24235.4</b>	<b>15344.6</b>	<b>8890.8</b>	<b>-2971.6</b>	<b>-1949.8</b>	<b>-1021.8</b>	<b>-1741.5</b>	<b>-1191.2</b>	<b>-550.3</b>
VII.2015	4105.0	2629.0	1476.0	4685.9	3047.1	1638.8	4455.2	2900.6	1554.6	-580.9	-418.1	-162.8	-350.2	-271.6	-78.6
VIII.2015	3682.9	2464.8	1218.1	3798.5	2356.9	1441.6	3617.8	2250.3	1367.5	-115.6	107.9	-223.5	65.1	214.5	-149.4
IX.2015	3623.7	2484.2	1139.5	4098.5	2674.4	1424.1	3905.4	2551.3	1354.1	-474.8	-190.2	-284.6	-281.7	-67.1	-214.6
<b>VII - IX.2015</b>	<b>11411.6</b>	<b>7578.0</b>	<b>3833.6</b>	<b>12582.9</b>	<b>8078.4</b>	<b>4504.5</b>	<b>11978.4</b>	<b>7702.2</b>	<b>4276.2</b>	<b>-1171.3</b>	<b>-500.4</b>	<b>-670.9</b>	<b>-566.8</b>	<b>-124.2</b>	<b>-442.6</b>
<b>I - IX.2015</b>	<b>33905.5</b>	<b>21731.4</b>	<b>12174.1</b>	<b>38048.4</b>	<b>24181.6</b>	<b>13866.8</b>	<b>36213.8</b>	<b>23046.8</b>	<b>13167.0</b>	<b>-4142.9</b>	<b>-2450.2</b>	<b>-1692.7</b>	<b>-2308.3</b>	<b>-1315.4</b>	<b>-992.9</b>
X.2015	3899.8	2688.2	1211.6	4613.8	3065.0	1548.8	4391.7	2918.4	1473.3	-714.0	-376.8	-337.2	-491.9	-230.2	-261.7
<b>I - X.2015</b>	<b>37805.3</b>	<b>24419.6</b>	<b>13385.7</b>	<b>42662.2</b>	<b>27246.6</b>	<b>15415.6</b>	<b>40605.5</b>	<b>25965.2</b>	<b>14640.3</b>	<b>-4856.9</b>	<b>-2827.0</b>	<b>-2029.9</b>	<b>-2800.2</b>	<b>-1545.6</b>	<b>-1254.6</b>
I.2016	3427.4	2263.1	1164.3	3472.1	2267.9	1204.2	3301.2	2154.9	1146.3	-44.7	-4.8	-39.9	126.2	108.2	18.0
II.2016	3481.6	2286.2	1195.4	3824.7	2601.5	1223.2	3644.8	2481.4	1163.4	-343.1	-315.3	-27.8	-163.2	-195.2	32.0
III.2016	3680.5	2507.4	1173.1	4217.1	3005.7	1211.4	4021.2	2865.0	1156.2	-536.6	-498.3	-38.3	-340.7	-357.6	16.9
<b>I - III.2016</b>	<b>10589.5</b>	<b>7056.7</b>	<b>3532.8</b>	<b>11513.9</b>	<b>7875.1</b>	<b>3638.8</b>	<b>10967.2</b>	<b>7501.3</b>	<b>3465.9</b>	<b>-924.4</b>	<b>-818.4</b>	<b>-106.0</b>	<b>-377.7</b>	<b>-444.6</b>	<b>66.9</b>
IV.2016	3635.1	2536.4	1098.7	4017.3	2694.2	1323.1	3832.0	2573.7	1258.3	-382.2	-157.8	-224.4	-196.9	-37.3	-159.6
V.2016	3517.3	2397.1	1120.2	4079.9	2624.2	1455.7	3883.5	2501.5	1382.0	-562.6	-227.1	-335.5	-366.2	-104.4	-261.8
VI.2016	3955.5	2692.5	1263.0	4311.0	2901.0	1410.0	4107.9	2765.7	1342.2	-355.5	-208.5	-147.0	-152.4	-73.2	-79.2
<b>IV - VI.2016</b>	<b>11107.9</b>	<b>7626.0</b>	<b>3481.9</b>	<b>12408.2</b>	<b>8219.4</b>	<b>4188.8</b>	<b>11823.4</b>	<b>7840.9</b>	<b>3982.5</b>	<b>-1300.3</b>	<b>-593.4</b>	<b>-706.9</b>	<b>-715.5</b>	<b>-214.9</b>	<b>-500.6</b>
<b>I - VI.2016</b>	<b>21697.4</b>	<b>14682.7</b>	<b>7014.7</b>	<b>23922.1</b>	<b>16094.5</b>	<b>7827.6</b>	<b>22790.6</b>	<b>15342.2</b>	<b>7448.4</b>	<b>-2224.7</b>	<b>-1411.8</b>	<b>-812.9</b>	<b>-1093.2</b>	<b>-659.5</b>	<b>-433.7</b>
VII.2016	4080.3	2818.4	1261.9	4334.9	2918.0	1416.9	4126.2	2781.2	1345.0	-254.6	-99.6	-155.0	-45.9	37.2	-83.1
VIII.2016	3913.2	2684.4	1228.8	4433.3	2785.6	1647.7	4213.7	2653.3	1560.4	-520.1	-101.2	-418.9	-300.5	31.1	-331.6
IX.2016	4051.9	2849.0	1202.9	4172.9	2738.6	1434.3	3973.8	2612.0	1361.8	-121.0	110.4	-231.4	78.1	237.0	-158.9
<b>VII - IX.2016</b>	<b>12045.4</b>	<b>8351.8</b>	<b>3693.6</b>	<b>12941.1</b>	<b>8442.2</b>	<b>4498.9</b>	<b>12313.7</b>	<b>8046.5</b>	<b>4267.2</b>	<b>-895.7</b>	<b>-90.4</b>	<b>-805.3</b>	<b>-268.3</b>	<b>305.3</b>	<b>-573.6</b>
<b>I - IX.2016</b>	<b>33742.8</b>	<b>23034.5</b>	<b>10708.3</b>	<b>36863.2</b>	<b>24536.7</b>	<b>12326.5</b>	<b>35104.3</b>	<b>23388.7</b>	<b>11715.6</b>	<b>-3120.4</b>	<b>-1502.2</b>	<b>-1618.2</b>	<b>-1361.5</b>	<b>-354.2</b>	<b>-1007.3</b>
X.2016	4153.1	2888.4	1264.7	4822.5	3236.8	1585.7	4585.0	3074.9	1510.1	-669.4	-348.4	-321.0	-431.9	-186.5	-245.4
<b>I - X.2016</b>	<b>37895.9</b>	<b>25922.9</b>	<b>11973.0</b>	<b>41685.7</b>	<b>27773.5</b>	<b>13912.2</b>	<b>39689.3</b>	<b>26463.6</b>	<b>13225.7</b>	<b>-3789.8</b>	<b>-1850.6</b>	<b>-1939.2</b>	<b>-1793.4</b>	<b>-540.7</b>	<b>-1252.7</b>

<sup>1</sup> Data are preliminary as of 12-th December 2016.

<sup>2</sup> By data of BNB for the transport costs.

Table 2

Value changes of exports and imports of Bulgaria in the period January - October  
2016<sup>1</sup> compared to the same period of the previous year

(Per cent)

Months/Periods	Exports - FOB			Imports - CIF			Imports - FOB		
	Total	EU	Non EU	Total	EU	Non EU	Total	EU	Non EU
I	0.7	-1.4	5.0	-7.8	-1.9	-17.3	-7.8	-2.0	-16.9
II	1.6	5.3	-4.8	-6.8	-0.9	-17.4	-6.6	-0.7	-17.2
III	-7.3	3.5	-24.3	-5.2	4.1	-22.4	-5.2	4.0	-22.2
<b>I - III</b>	<b>-2.0</b>	<b>2.4</b>	<b>-9.7</b>	<b>-6.5</b>	<b>0.7</b>	<b>-19.1</b>	<b>-6.5</b>	<b>0.6</b>	<b>-18.8</b>
IV	-7.1	5.5	-27.2	-11.5	-6.0	-20.8	-11.2	-5.7	-20.6
V	-6.3	4.3	-23.2	-2.5	1.6	-9.2	-2.5	1.5	-9.1
VI	-1.7	5.1	-13.5	-2.5	2.5	-11.5	-2.5	2.5	-11.4
<b>IV - VI</b>	<b>-5.0</b>	<b>5.0</b>	<b>-21.4</b>	<b>-5.6</b>	<b>-0.7</b>	<b>-13.9</b>	<b>-5.5</b>	<b>-0.6</b>	<b>-13.8</b>
<b>I - VI</b>	<b>-3.5</b>	<b>3.7</b>	<b>-15.9</b>	<b>-6.1</b>	<b>-0.1</b>	<b>-16.4</b>	<b>-6.0</b>	<b>0.0</b>	<b>-16.2</b>
VII	-0.6	7.2	-14.5	-7.5	-4.2	-13.5	-7.4	-4.1	-13.5
VIII	6.3	8.9	0.9	16.7	18.2	14.3	16.5	17.9	14.1
IX	11.8	14.7	5.6	1.8	2.4	0.7	1.8	2.4	0.6
<b>XII - IX</b>	<b>5.6</b>	<b>10.2</b>	<b>-3.7</b>	<b>2.8</b>	<b>4.5</b>	<b>-0.1</b>	<b>2.8</b>	<b>4.5</b>	<b>-0.2</b>
<b>I - IX</b>	<b>-0.5</b>	<b>6.0</b>	<b>-12.0</b>	<b>-3.1</b>	<b>1.5</b>	<b>-11.1</b>	<b>-3.1</b>	<b>1.5</b>	<b>-11.0</b>
X	6.5	7.4	4.4	4.5	5.6	2.4	4.4	5.4	2.5
<b>I - X</b>	<b>0.2</b>	<b>6.2</b>	<b>-10.6</b>	<b>-2.3</b>	<b>1.9</b>	<b>-9.8</b>	<b>-2.3</b>	<b>1.9</b>	<b>-9.7</b>

<sup>1</sup> Data are preliminary as of 12-th December 2016.



**Table 3**  
**Exports, imports and trade balance of Bulgaria with main non EU partner countries<sup>1</sup> in the period January - October 2015 and 2016<sup>2</sup>**

Countries	Exports - FOB			Imports - CIF			Trade balance - FOB/CIF	
	2015	2016	Change compared to the same period of the previous year - %	2015	2016	Change compared to the same period of the previous year - %	2015	2016
	Million BGN			Million BGN			Million BGN	
<b>Third countries -total</b>	<b>13385.7</b>	<b>11973.0</b>	<b>-10.6</b>	<b>15415.6</b>	<b>13912.2</b>	<b>-9.8</b>	<b>-2029.9</b>	<b>-1939.2</b>
of which:								
Albania	95.9	80.2	-16.4	30.6	22.5	-26.5	65.3	57.7
Bosnia and Herzegovina	98.9	111.0	12.2	51.2	66.1	29.1	47.7	44.9
Brazil	41.3	41.3	0.0	51.4	42.0	-18.3	-10.1	-0.7
Canada	66.7	56.2	-15.7	44.6	75.0	68.2	22.1	-18.8
China	902.1	589.1	-34.7	1578.6	1703.5	7.9	-676.5	-1114.4
Egypt	542.6	362.6	-33.2	114.7	532.8	364.5	427.9	-170.2
Former Yugoslav Republic of Macedonia	620.4	637.0	2.7	434.3	394.0	-9.3	186.1	243.0
Georgia	269.5	264.8	-1.7	374.6	215.1	-42.6	-105.1	49.7
Gibraltar	25.2	43.2	71.4	0.0	0.1	x	25.2	43.1
India	88.5	101.7	14.9	236.8	187.4	-20.9	-148.3	-85.7
Indonesia	42.7	41.8	-2.1	58.5	56.5	-3.4	-15.8	-14.7
Iran, Islamic Republic of	216.6	106.8	-50.7	9.2	41.2	347.8	207.4	65.6
Israel	125.1	106.7	-14.7	62.3	82.8	32.9	62.8	23.9
Japan	65.5	58.7	-10.4	134.4	157.3	17.0	-68.9	-98.6
Kazakhstan	35.1	24.8	-29.3	41.2	27.0	-34.5	-6.1	-2.2
Korea, Republic of	93.8	90.2	-3.8	138.2	187.2	35.5	-44.4	-97.0
Libya	120.0	136.5	13.8	161.0	7.2	-95.5	-41.0	129.3
Morocco	71.2	67.7	-4.9	118.9	162.2	36.4	-47.7	-94.5
Namibia	143.1	94.0	-34.3	0.1	0.1	0.0	143.0	93.9
Norway	44.7	24.8	-44.5	26.7	39.3	47.2	18.0	-14.5
Peru	4.9	8.0	63.3	31.2	34.8	11.5	-26.3	-26.8
Russian Federation	663.8	555.0	-16.4	5124.1	3745.7	-26.9	-4460.3	-3190.7
Serbia	685.9	634.2	-7.5	594.5	604.6	1.7	91.4	29.6
Singapore	619.2	304.1	-50.9	44.9	41.1	-8.5	574.3	263.0
South Africa	99.7	91.4	-8.3	19.6	32.0	63.3	80.1	59.4
Switzerland	161.7	116.9	-27.7	314.0	310.0	-1.3	-152.3	-193.1
Syrian Arab Republic	41.4	29.1	-29.7	14.7	1.5	-89.8	26.7	27.6
Taiwan	36.2	28.3	-21.8	182.4	173.5	-4.9	-146.2	-145.2
Turkey	3346.8	3000.9	-10.3	2436.7	2567.9	5.4	910.1	433.0
Ukraine	292.4	108.0	-63.1	792.1	648.3	-18.2	-499.7	-540.3
United Arab Emirates	357.8	306.7	-14.3	131.4	34.4	-73.8	226.4	272.3
United States	627.8	470.8	-25.0	404.4	340.9	-15.7	223.4	129.9
Viet-Nam	62.5	145.7	133.1	77.3	66.7	-13.7	-14.8	79.0

<sup>1</sup> Partner country:

- In case of exports (or dispatches) is the country (or Member State) of final destination of the goods.

- In case of imports (or arrivals) is the country (or Member State) of consignment of the goods.

<sup>2</sup> Data are preliminary as of 12-th December 2016.

"x"- category not applicable.

"-" no case.

"0"- figure less than half the unit used.



**Table 4**  
**Exports, imports and trade balance of Bulgaria with non EU countries by sections of SITC, rev.4 in the period January - October 2015 and 2016<sup>1</sup>**

Sections by SITC	Exports - FOB			Imports - CIF			Trade balance - FOB/CIF	
	2015	2016	Change compared to the same period of the previous year - %	2015	2016	Change compared to the same period of the previous year - %	2015	2016
	Million BGN			Million BGN			Million BGN	
<b>Third countries -total</b>	<b>13385.7</b>	<b>11973.0</b>	<b>-10.6</b>	<b>15415.6</b>	<b>13912.2</b>	<b>-9.8</b>	<b>-2029.9</b>	<b>-1939.2</b>
Food and live animals	1304.7	1183.7	-9.3	658.4	679.9	3.3	646.3	503.8
Beverages and tobacco	437.6	330.2	-24.5	123.4	126.1	2.2	314.2	204.1
Crude materials, inedible (except fuel)	946.5	835.3	-11.7	1516.6	1135.9	-25.1	-570.1	-300.6
Mineral fuel, lubricants and related materials	2968.9	2431.4	-18.1	5516.6	4057.7	-26.4	-2547.7	-1626.3
Animals and vegetable oils, fats and waxes	134.0	125.8	-6.1	46.8	38.7	-17.3	87.2	87.1
Chemical and related products n.e.c.	1614.1	1252.9	-22.4	1408.6	1358.4	-3.6	205.5	-105.5
Manufactured goods classified chiefly by material	2641.1	2214.8	-16.1	2769.8	2766.7	-0.1	-128.7	-551.9
Machinery and transport equipment	2095.0	1987.2	-5.1	2390.9	2603.3	8.9	-295.9	-616.1
Miscellaneous manufactured articles	1217.1	1580.9	29.9	960.0	1107.3	15.3	257.1	473.6
Commodities and transactions n.e.c.	26.7	30.8	15.4	24.5	38.2	55.9	2.2	-7.4

<sup>1</sup> Data are preliminary as of 12-th December 2016.