

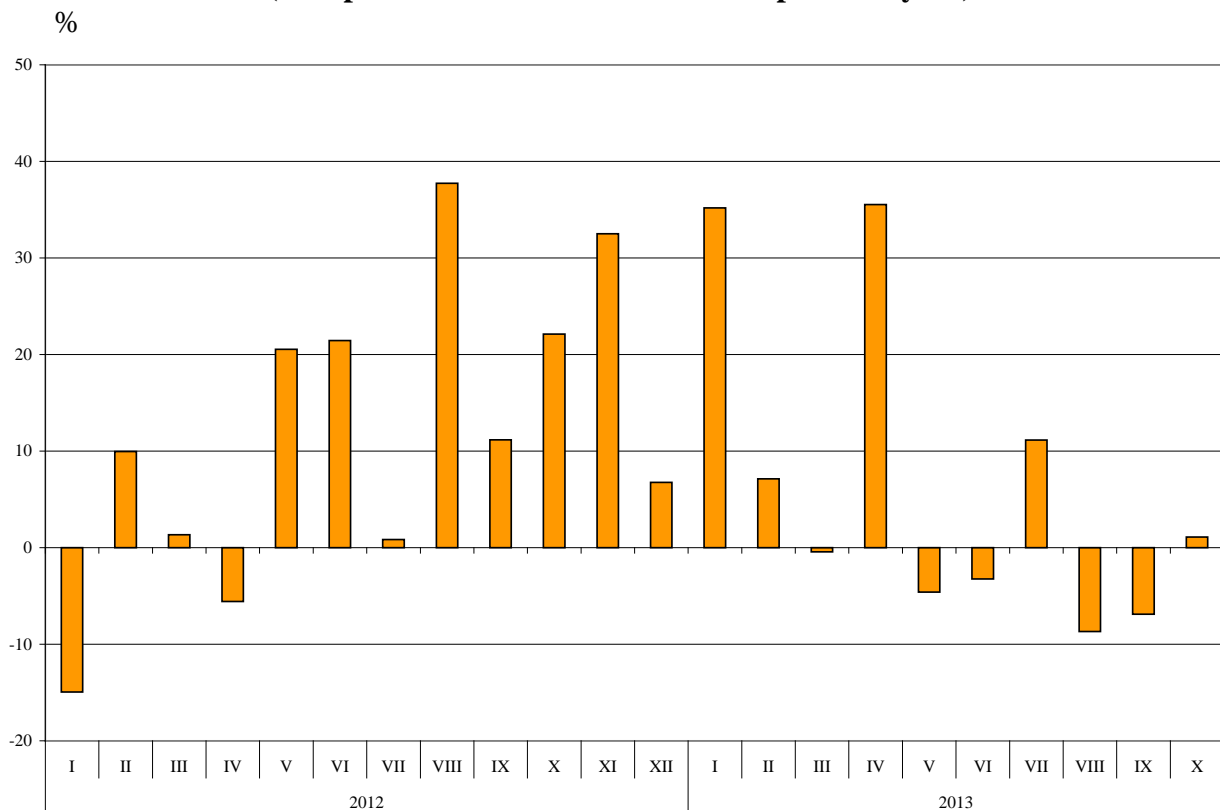


BULGARIAN TRADE WITH THIRD COUNTRIES FOR THE PERIOD JANUARY - OCTOBER 2013 (PRELIMINARY DATA)

In the period **January - October 2013** the Bulgarian **exports to third countries** increased by 5.1% compared to the corresponding period of 2012 and amounted to 14.5 Billion BGN (Annex, Table 1 and 2). Main trade partners of Bulgaria were Turkey, China, Russian Federation, Gibraltar, Ukraine and Serbia which accounted for 51.1% of the exports to non EU countries (Annex, Table 3).

In October 2013 the **exports to third countries** increased by 1.1% compared to the corresponding month of the previous year and amounted to 1.5 Billion BGN.

**Figure 1. Nominal value¹ change of exports of Bulgaria to non EU countries
for the period 2012 - 2013
(Compared to the same month of the previous year)**



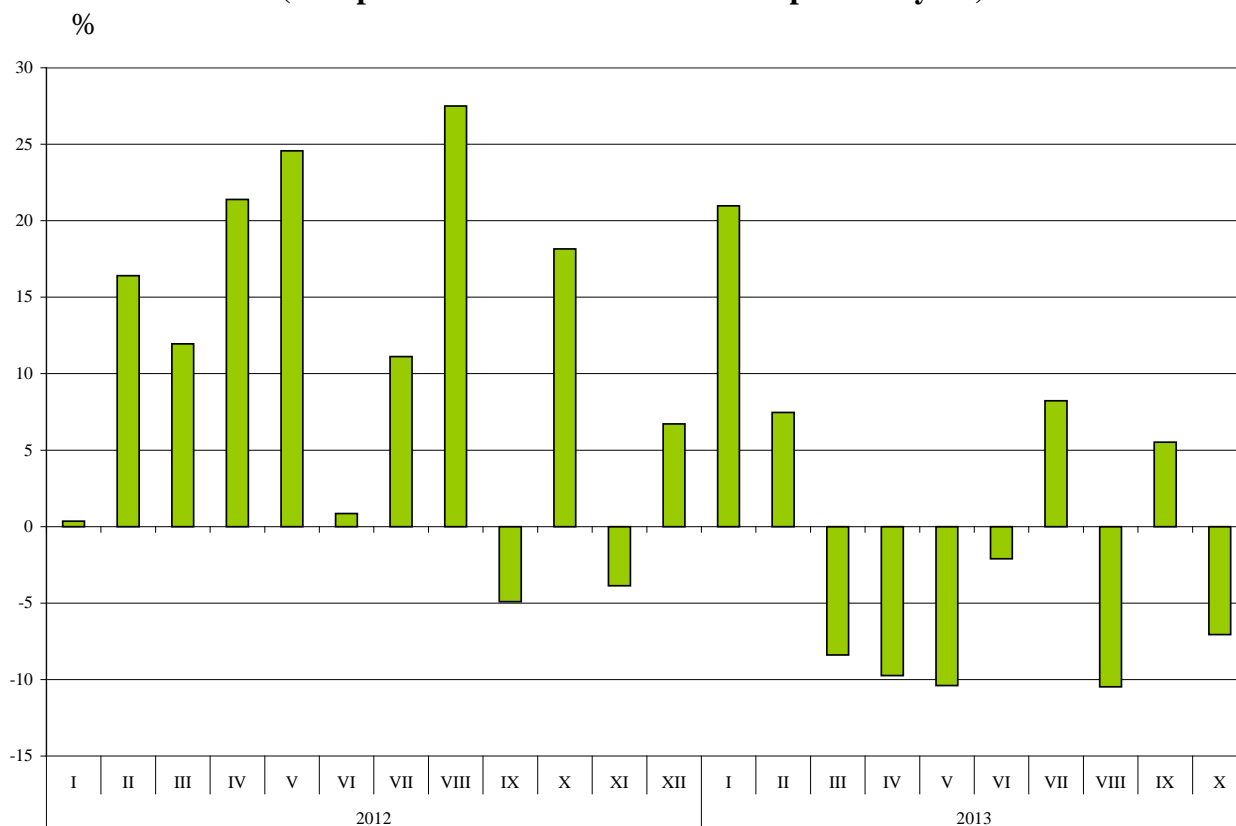
Bulgarian imports from third countries in the first ten months of 2013 decreased by 1.6% compared to the corresponding period of 2012 and added up to 17.0 Billion BGN (at CIF prices) (Annex, Tables 1 and 2). The largest amounts were reported for the goods imported from Russian Federation, Turkey, China and Ukraine (Annex, Table 3).

In October 2013 the Bulgarian imports from third countries decreased by 7.1% compared to the corresponding month of the previous year and amounted to 1.8 Billion BGN.

¹ Value changes at current prices.



Figure 2. Nominal value¹ change of imports of Bulgaria to non EU countries for the period 2012 - 2013 (Compared to the same month of the previous year)



The foreign trade balance of Bulgaria (export FOB - import CIF) with third countries in the period January - October 2013 was negative and added up to 2 534.6 Million BGN (Annex, Table 1). The trade balance at FOB/FOB prices (after elimination of transport and insurance costs on imports) was also negative and amounted to 1 621.7 Million BGN.

In October 2013 the foreign trade balance of Bulgaria (export FOB - import CIF) with third countries was negative and amounted to 225.2 Million BGN.

In the first ten months of 2013 compared to the corresponding period of 2012 largest growths in the exports of Bulgaria to third countries distributed according to the **Standard International Trade Classification** were recorded in the sections “Food and live animals” (82.6%) and “Machinery and transport equipment” (23.0%) (Annex, Table 4). The most notable fall was reported in section “Crude materials, inedible (except fuels)”² (12.2%).

In imports from third countries the largest growth was reported in section “Food and live animals” (31.9%) while the most notable fall was observed in section “Animals and vegetable oils, fats and waxes” (31.5%).

¹ Value changes at current prices.

² The section includes following divisions: raw hides, skins and furskins; oil-seeds and oleaginous fruits; crude rubber; cork and wood; pulp and waste paper; textile fibres and their wastes; crude fertilizers and crude minerals; metalliferous ores and metal scrap; crude animal and vegetable materials, n.e.s.

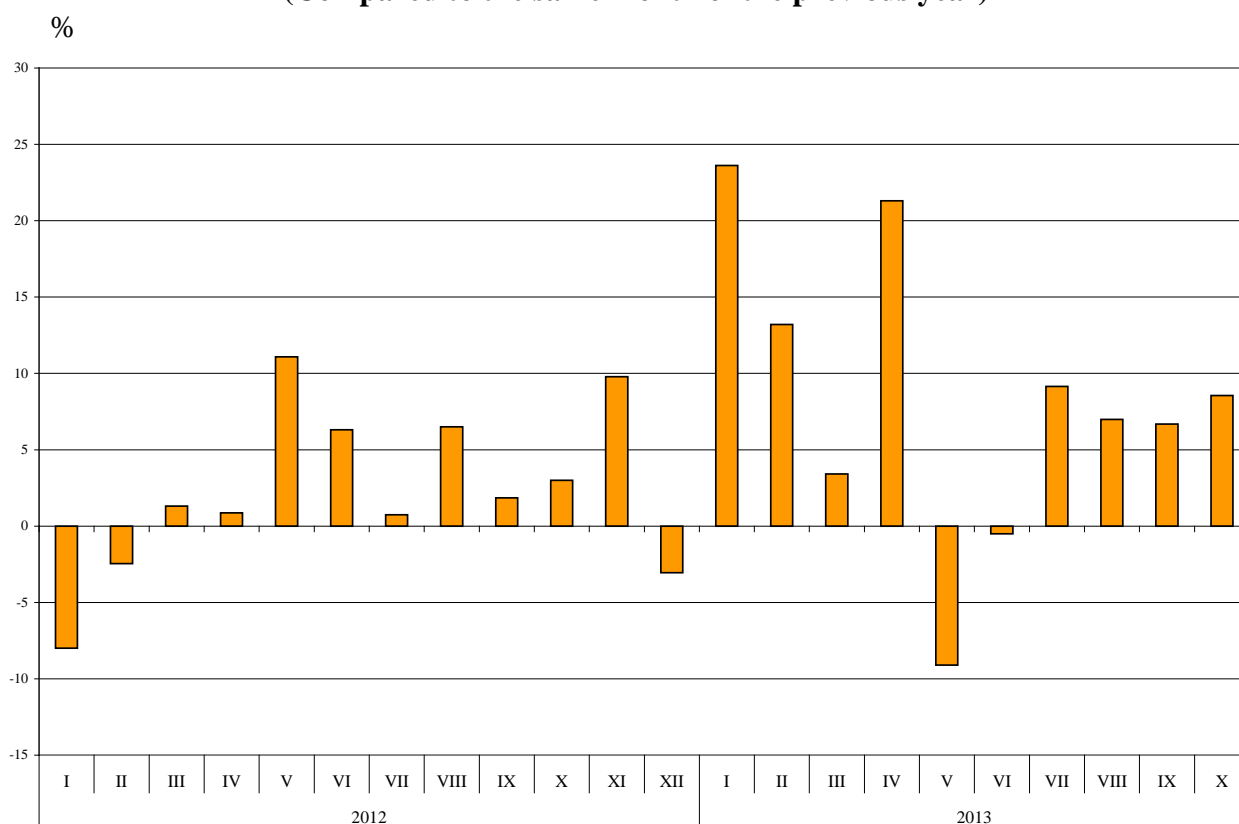


Bulgarian trade with third countries and EU - total

In the period January - October 2013 the value of **all exported goods** from Bulgaria amounted to 36.4 Billion BGN and compared to the corresponding period of the previous year the exports increased by 7.8% (Annex, Table 1 and 2).

In October 2013 the total exports added up to 3.9 Billion BGN and increased by 8.6% compared to the corresponding month of the previous year.

**Figure 3. Nominal value¹ change of exports of Bulgaria for the period 2012 - 2013
(Compared to the same month of the previous year)**



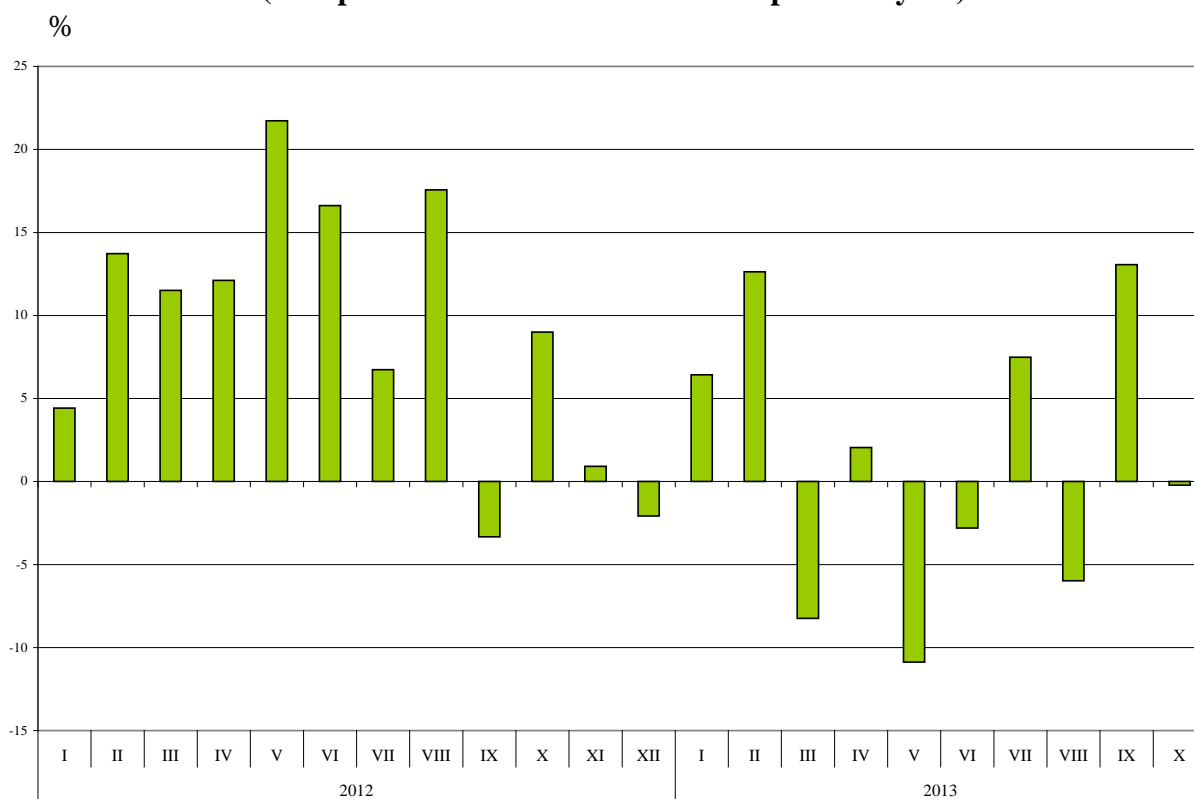
The total value of **all the goods imported in** the country **in the period January - October 2013** amounted to 42.0 Billion BGN (at CIF prices), or by 0.9% more than the corresponding period of the previous year (Annex, Table 1 and 2).

In October 2013 the total imports decreased by 0.2% compared to the corresponding month of the previous year and added up to 4.5 Billion BGN.

¹ Value changes at current prices.



**Figure 4. Nominal value¹ change of imports of Bulgaria for the period 2012 - 2013
(Compared to the same month of the previous year)**



The **total foreign trade balance** (exports FOB - import CIF) was negative in the period January - October 2013 and amounted to 5 594.2 Million BGN which was 2 232.0 Million BGN less than the balance in the first ten months of 2012 (Annex, Table 1 and 2). At FOB/FOB prices (after elimination of transport and insurance costs on imports) in the period January - October 2013 the total foreign trade balance was also negative and amounted to 3 524.9 Million BGN.

In October 2013 the total foreign trade balance (exports FOB - import CIF) was negative and added up to 579.1 Million BGN. The trade balance at FOB/FOB prices was also negative and amounted to 342.7 Million BGN.

¹ Value changes at current prices.

Table 1

Exports, imports and trade balance of Bulgaria for the period January - October 2012 and 2013¹ by months

(Million BGN)

| Months/Periods | Exports - FOB | | | Imports - CIF | | | Imports - FOB ² | | | Trade balance - FOB/CIF | | | Trade balance - FOB/FOB ² | | |
|----------------------|----------------|-----------------|---------------------|----------------|-----------------|---------------------|----------------------------|-----------------|---------------------|-------------------------|-----------------|---------------------|--------------------------------------|-----------------|---------------------|
| | Total | EU ³ | Non EU ⁴ | Total | EU ³ | Non EU ⁴ | Total | EU ³ | Non EU ⁴ | Total | EU ³ | Non EU ⁴ | Total | EU ³ | Non EU ⁴ |
| I.2012 | 2810.3 | 1733.9 | 1076.4 | 3501.3 | 2130.3 | 1371.0 | 3330.7 | 2029.9 | 1300.8 | -691.0 | -396.4 | -294.6 | -520.4 | -296.0 | -224.4 |
| II.2012 | 2862.9 | 1659.7 | 1203.2 | 3603.3 | 2125.2 | 1478.1 | 3433.5 | 2032.3 | 1401.2 | -740.4 | -465.5 | -274.9 | -570.6 | -372.6 | -198.0 |
| III.2012 | 3363.6 | 2053.3 | 1310.3 | 4207.2 | 2540.7 | 1666.5 | 4008.0 | 2426.2 | 1581.8 | -843.6 | -487.4 | -356.2 | -644.4 | -372.9 | -271.5 |
| I - III.2012 | 9036.8 | 5446.9 | 3589.9 | 11311.8 | 6796.2 | 4515.6 | 10772.2 | 6488.4 | 4283.8 | -2275.0 | -1349.3 | -925.7 | -1735.4 | -1041.5 | -693.9 |
| IV.2012 | 3171.8 | 1950.5 | 1221.3 | 4277.3 | 2348.4 | 1928.9 | 4068.0 | 2245.9 | 1822.1 | -1105.5 | -397.9 | -707.6 | -896.2 | -295.4 | -600.8 |
| V.2012 | 3647.7 | 2149.9 | 1497.8 | 4646.8 | 2679.1 | 1967.7 | 4420.4 | 2556.6 | 1863.8 | -999.1 | -529.2 | -469.9 | -772.7 | -406.7 | -366.0 |
| VI.2012 | 3462.2 | 2017.5 | 1444.7 | 4372.3 | 2643.4 | 1728.9 | 4158.3 | 2517.6 | 1640.7 | -910.1 | -625.9 | -284.2 | -696.1 | -500.1 | -196.0 |
| IV - VI.2012 | 10281.7 | 6117.9 | 4163.8 | 13296.4 | 7670.9 | 5625.5 | 12646.7 | 7320.1 | 5326.6 | -3014.7 | -1553.0 | -1461.7 | -2365.0 | -1202.2 | -1162.8 |
| I - VI.2012 | 19318.5 | 11564.8 | 7753.7 | 24608.2 | 14467.1 | 10141.1 | 23418.9 | 13808.5 | 9610.4 | -5289.7 | -2902.3 | -2387.4 | -4100.4 | -2243.7 | -1856.7 |
| VII.2012 | 3645.9 | 2251.4 | 1394.5 | 4341.6 | 2657.5 | 1684.1 | 4134.1 | 2536.4 | 1597.7 | -695.7 | -406.1 | -289.6 | -488.2 | -285.0 | -203.2 |
| VIII.2012 | 3658.4 | 1979.5 | 1678.9 | 4115.4 | 2232.0 | 1883.4 | 3913.7 | 2134.6 | 1779.1 | -457.0 | -252.5 | -204.5 | -255.3 | -155.1 | -100.2 |
| IX.2012 | 3549.9 | 2120.9 | 1429.0 | 4033.4 | 2351.8 | 1681.6 | 3836.8 | 2248.9 | 1587.9 | -483.5 | -230.9 | -252.6 | -286.9 | -128.0 | -158.9 |
| VII - IX.2012 | 10854.2 | 6351.8 | 4502.4 | 12490.4 | 7241.3 | 5249.1 | 11884.6 | 6919.9 | 4964.7 | -1636.2 | -889.5 | -746.7 | -1030.4 | -568.1 | -462.3 |
| I - IX.2012 | 30172.7 | 17916.6 | 12256.1 | 37098.6 | 21708.4 | 15390.2 | 35303.5 | 20728.4 | 14575.1 | -6925.9 | -3791.8 | -3134.1 | -5130.8 | -2811.8 | -2319.0 |
| X.2012 | 3637.5 | 2106.5 | 1531.0 | 4537.8 | 2630.0 | 1907.8 | 4316.2 | 2514.0 | 1802.2 | -900.3 | -523.5 | -376.8 | -678.7 | -407.5 | -271.2 |
| I - X.2012 | 33810.2 | 20023.1 | 13787.1 | 41636.4 | 24338.4 | 17298.0 | 39619.7 | 23242.4 | 16377.3 | -7826.2 | -4315.3 | -3510.9 | -5809.5 | -3219.3 | -2590.2 |
| I.2013 | 3474.0 | 2018.8 | 1455.2 | 3726.2 | 2067.6 | 1658.6 | 3540.1 | 1974.3 | 1565.8 | -252.2 | -48.8 | -203.4 | -66.1 | 44.5 | -110.6 |
| II.2013 | 3241.1 | 1952.2 | 1288.9 | 4058.6 | 2470.1 | 1588.5 | 3852.3 | 2350.6 | 1501.7 | -817.5 | -517.9 | -299.6 | -611.2 | -398.4 | -212.8 |
| III.2013 | 3478.4 | 2173.7 | 1304.7 | 3860.3 | 2333.6 | 1526.7 | 3681.2 | 2232.5 | 1448.7 | -381.9 | -159.9 | -222.0 | -202.8 | -58.8 | -144.0 |
| I-III.2013 | 10193.5 | 6144.7 | 4048.8 | 11645.1 | 6871.3 | 4773.8 | 11073.6 | 6557.4 | 4516.2 | -1451.6 | -726.6 | -725.0 | -880.1 | -412.7 | -467.4 |
| IV.2013 | 3847.7 | 2192.4 | 1655.3 | 4365.0 | 2623.9 | 1741.1 | 4159.1 | 2502.3 | 1656.8 | -517.3 | -431.5 | -85.8 | -311.4 | -309.9 | -1.5 |
| V.2013 | 3315.6 | 1886.7 | 1428.9 | 4141.1 | 2377.9 | 1763.2 | 3942.0 | 2272.0 | 1670.0 | -825.5 | -491.2 | -334.3 | -626.4 | -385.3 | -241.1 |
| VI.2013 | 3444.6 | 2046.7 | 1397.9 | 4249.7 | 2557.1 | 1692.6 | 4043.8 | 2440.8 | 1603.0 | -805.1 | -510.4 | -294.7 | -599.2 | -394.1 | -205.1 |
| IV - VI.2013 | 10607.9 | 6125.8 | 4482.1 | 12755.8 | 7558.9 | 5196.9 | 12144.9 | 7215.1 | 4929.8 | -2147.9 | -1433.1 | -714.8 | -1537.0 | -1089.3 | -447.7 |
| I - VI.2013 | 20801.4 | 12270.5 | 8530.9 | 24400.9 | 14430.2 | 9970.7 | 23218.5 | 13772.5 | 9446.0 | -3599.5 | -2159.7 | -1439.8 | -2417.1 | -1502.0 | -915.1 |
| VII.2013 | 3979.6 | 2429.7 | 1549.9 | 4666.4 | 2843.7 | 1822.7 | 4435.2 | 2711.5 | 1723.7 | -686.8 | -414.0 | -272.8 | -455.6 | -281.8 | -173.8 |
| VIII.2013 | 3913.9 | 2380.7 | 1533.2 | 3869.6 | 2183.5 | 1686.1 | 3678.1 | 2085.2 | 1592.9 | 44.3 | 197.2 | -152.9 | 235.8 | 295.5 | -59.7 |
| IX.2013 | 3787.3 | 2456.7 | 1330.6 | 4560.4 | 2785.9 | 1774.5 | 4332.6 | 2655.4 | 1677.2 | -773.1 | -329.2 | -443.9 | -545.3 | -198.7 | -346.6 |
| VII - IX.2013 | 11680.8 | 7267.1 | 4413.7 | 13096.4 | 7813.1 | 5283.3 | 12445.9 | 7452.1 | 4993.8 | -1415.6 | -546.0 | -869.6 | -765.1 | -185.0 | -580.1 |
| I - IX.2013 | 32482.2 | 19537.6 | 12944.6 | 37497.3 | 22243.3 | 15254.0 | 35664.4 | 21224.6 | 14439.8 | -5015.1 | -2705.7 | -2309.4 | -3182.2 | -1687.0 | -1495.2 |
| X.2013 | 3948.7 | 2400.7 | 1548.0 | 4527.8 | 2754.6 | 1773.2 | 4291.4 | 2616.9 | 1674.5 | -579.1 | -353.9 | -225.2 | -342.7 | -216.2 | -126.5 |
| I - X.2013 | 36430.9 | 21938.3 | 14492.6 | 42025.1 | 24997.9 | 17027.2 | 39955.8 | 23841.5 | 16114.3 | -5594.2 | -3059.6 | -2534.6 | -3524.9 | -1903.2 | -1621.7 |

¹ Data are preliminary as of 10.12.2013.

² By data of BNB for the transport costs.

³ EU including Croatia also for the periods prior 1st of July 2013.

⁴ Non EU excluding Croatia also for the periods prior 1st of July 2013.



Table 2

**Value changes of exports and imports of Bulgaria for the period January - October
2013¹ compared to the same period of the previous year**

(Per cent)

| Months/Periods | Exports - FOB | | | Imports - CIF | | | Imports - FOB | | |
|-----------------|---------------|-----------------|---------------------|---------------|-----------------|---------------------|---------------|-----------------|---------------------|
| | Total | EU ² | Non EU ³ | Total | EU ² | Non EU ³ | Total | EU ² | Non EU ³ |
| I | 23.6 | 16.4 | 35.2 | 6.4 | -2.9 | 21.0 | 6.3 | -2.7 | 20.4 |
| II | 13.2 | 17.6 | 7.1 | 12.6 | 16.2 | 7.5 | 12.2 | 15.7 | 7.2 |
| III | 3.4 | 5.9 | -0.4 | -8.2 | -8.2 | -8.4 | -8.2 | -8.0 | -8.4 |
| I - III | 12.8 | 12.8 | 12.8 | 2.9 | 1.1 | 5.7 | 2.8 | 1.1 | 5.4 |
| IV | 21.3 | 12.4 | 35.5 | 2.1 | 11.7 | -9.7 | 2.2 | 11.4 | -9.1 |
| V | -9.1 | -12.2 | -4.6 | -10.9 | -11.2 | -10.4 | -10.8 | -11.1 | -10.4 |
| VI | -0.5 | 1.4 | -3.2 | -2.8 | -3.3 | -2.1 | -2.8 | -3.1 | -2.3 |
| IV - VI | 3.2 | 0.1 | 7.6 | -4.1 | -1.5 | -7.6 | -4.0 | -1.4 | -7.4 |
| I - VI | 7.7 | 6.1 | 10.0 | -0.8 | -0.3 | -1.7 | -0.9 | -0.3 | -1.7 |
| VII | 9.2 | 7.9 | 11.1 | 7.5 | 7.0 | 8.2 | 7.3 | 6.9 | 7.9 |
| VIII | 7.0 | 20.3 | -8.7 | -6.0 | -2.2 | -10.5 | -6.0 | -2.3 | -10.5 |
| IX | 6.7 | 15.8 | -6.9 | 13.1 | 18.5 | 5.5 | 12.9 | 18.1 | 5.6 |
| VII - IX | 7.6 | 14.4 | -2.0 | 4.9 | 7.9 | 0.7 | 4.7 | 7.7 | 0.6 |
| I - IX | 7.7 | 9.0 | 5.6 | 1.1 | 2.5 | -0.9 | 1.0 | 2.4 | -0.9 |
| X | 8.6 | 14.0 | 1.1 | -0.2 | 4.7 | -7.1 | -0.6 | 4.1 | -7.1 |
| I - X | 7.8 | 9.6 | 5.1 | 0.9 | 2.7 | -1.6 | 0.8 | 2.6 | -1.6 |

¹ Data are preliminary as of 10.12.2013.

² EU including Croatia also for the periods prior 1st of July 2013.

³ Non EU excluding Croatia also for the periods prior 1st of July 2013.



Table 3

Exports, imports and trade balance of Bulgaria with main non EU partner countries¹ for the period January - October 2012 and 2013²

| Countries | Exports - FOB | | | Imports - CIF | | | Trade balance - FOB/CIF | |
|--|----------------|----------------|---|----------------|----------------|---|-------------------------|----------------|
| | 2012 | 2013 | Change compared to the same period of the previous year - % | 2012 | 2013 | Change compared to the same period of the previous year - % | 2012 | 2013 |
| | Million BGN | | | Million BGN | | | Million BGN | |
| Third countries³ - total | 13787.1 | 14492.6 | 5.1 | 17298.0 | 17027.2 | -1.6 | -3510.9 | -2534.6 |
| of which: | | | | | | | | |
| Albania | 81.2 | 103.3 | 27.2 | 31.2 | 28.0 | -10.3 | 50.0 | 75.3 |
| Bosnia and Herzegovina | 57.9 | 65.6 | 13.3 | 27.4 | 43.9 | 60.2 | 30.5 | 21.7 |
| Brazil | 64.8 | 19.5 | -69.9 | 208.9 | 81.7 | -60.9 | -144.1 | -62.2 |
| Canada | 184.6 | 132.3 | -28.3 | 64.8 | 25.9 | -60.0 | 119.8 | 106.4 |
| China | 985.3 | 989.7 | 0.4 | 1290.1 | 1269.6 | -1.6 | -304.8 | -279.9 |
| Egypt | 227.3 | 305.0 | 34.2 | 83.2 | 85.6 | 2.9 | 144.1 | 219.4 |
| Former Yugoslav Republic of Macedonia | 657.6 | 569.5 | -13.4 | 415.0 | 455.3 | 9.7 | 242.6 | 114.2 |
| Georgia | 460.1 | 299.7 | -34.9 | 274.3 | 375.2 | 36.8 | 185.8 | -75.5 |
| Gibraltar | 1098.0 | 786.8 | -28.3 | 0.0 | 0.0 | 0.0 | 1098.0 | 786.8 |
| India | 56.4 | 49.1 | -12.9 | 122.8 | 195.1 | 58.9 | -66.4 | -146.0 |
| Indonesia | 25.4 | 43.3 | 70.5 | 41.4 | 46.8 | 13.0 | -16.0 | -3.5 |
| Iran, Islamic Republic of | 31.3 | 22.3 | -28.8 | 7.6 | 2.7 | -64.5 | 23.7 | 19.6 |
| Israel | 148.8 | 162.6 | 9.3 | 94.4 | 79.2 | -16.1 | 54.4 | 83.4 |
| Japan | 41.2 | 47.1 | 14.3 | 107.3 | 108.3 | 0.9 | -66.1 | -61.2 |
| Kazakhstan | 52.1 | 43.8 | -15.9 | 64.6 | 71.9 | 11.3 | -12.5 | -28.1 |
| Korea, Republic of | 203.1 | 172.8 | -14.9 | 154.1 | 146.9 | -4.7 | 49.0 | 25.9 |
| Namibia | 333.0 | 202.8 | -39.1 | 0.0 | 0.4 | 0.0 | 333.0 | 202.4 |
| Norway | 50.7 | 57.7 | 13.8 | 11.9 | 26.0 | 118.5 | 38.8 | 31.7 |
| Peru | 4.3 | 11.4 | 165.1 | 161.0 | 15.2 | -90.6 | -156.7 | -3.8 |
| Russian Federation | 936.4 | 944.3 | 0.8 | 8671.5 | 7951.5 | -8.3 | -7735.1 | -7007.2 |
| Serbia | 763.9 | 618.9 | -19.0 | 415.4 | 412.0 | -0.8 | 348.5 | 206.9 |
| Singapore | 90.2 | 438.8 | 386.5 | 23.8 | 21.4 | -10.1 | 66.4 | 417.4 |
| South Africa | 91.2 | 281.7 | 208.9 | 55.9 | 45.3 | -19.0 | 35.3 | 236.4 |
| Switzerland | 258.7 | 257.2 | -0.6 | 338.6 | 331.7 | -2.0 | -79.9 | -74.5 |
| Syrian Arab Republic | 34.8 | 97.7 | 180.7 | 64.0 | 27.9 | -56.4 | -29.2 | 69.8 |
| Taiwan | 41.0 | 38.7 | -5.6 | 107.9 | 108.4 | 0.5 | -66.9 | -69.7 |
| Turkey | 3227.6 | 3316.0 | 2.7 | 1925.7 | 2412.1 | 25.3 | 1301.9 | 903.9 |
| Ukraine | 414.1 | 744.1 | 79.7 | 1066.8 | 920.6 | -13.7 | -652.7 | -176.5 |
| United Arab Emirates | 187.9 | 353.9 | 88.3 | 97.6 | 70.6 | -27.7 | 90.3 | 283.3 |
| United States | 579.7 | 481.3 | -17.0 | 287.4 | 308.2 | 7.2 | 292.3 | 173.1 |
| Viet-Nam | 20.0 | 25.5 | 27.5 | 55.2 | 50.8 | -8.0 | -35.2 | -25.3 |

¹ Partner country

- In case of exports (or dispatches) is the country (or Member State) of final destination of the goods

- In case of imports (or arrivals) is the country (or Member State) of consignment of the goods.

² Data are preliminary as of 10.12.2013.

³ Non EU excluding Croatia.



Table 4

Exports, imports and trade balance of Bulgaria with non EU countries by sections of SITC, rev.4 for the period January - October 2012 and 2013¹

| Sections by SITC | Exports - FOB | | | Imports - CIF | | | Trade balance - FOB/CIF | |
|---|----------------|----------------|---|----------------|----------------|---|-------------------------|----------------|
| | 2012 | 2013 | Change compared to the same period of the previous year - % | 2012 | 2013 | Change compared to the same period of the previous year - % | 2012 | 2013 |
| | Million BGN | | | Million BGN | | | Million BGN | |
| Third countries² -total | 13787.1 | 14492.6 | 5.1 | 17298.0 | 17027.2 | -1.6 | -3510.9 | -2534.6 |
| Food and live animals | 742.7 | 1355.9 | 82.6 | 379.1 | 500.1 | 31.9 | 363.6 | 855.8 |
| Beverages and tobacco | 459.0 | 501.2 | 9.2 | 137.8 | 146.0 | 6.0 | 321.2 | 355.2 |
| Crude materials, inedible (except fuel) | 1618.8 | 1420.7 | -12.2 | 1460.9 | 1487.9 | 1.8 | 157.9 | -67.2 |
| Mineral fuel, lubricants and related materials | 4209.6 | 4324.6 | 2.7 | 8812.4 | 8317.2 | -5.6 | -4602.8 | -3992.6 |
| Animals and vegetable oils, fats and waxes | 61.4 | 71.0 | 15.6 | 53.1 | 36.4 | -31.5 | 8.3 | 34.6 |
| Chemical and related products n.e.c. | 1486.7 | 1389.0 | -6.6 | 1113.4 | 1244.8 | 11.8 | 373.3 | 144.2 |
| Manufactured goods classified chiefly by material | 2882.9 | 2719.3 | -5.7 | 2372.8 | 2534.9 | 6.8 | 510.1 | 184.4 |
| Machinery and transport equipment | 1514.8 | 1863.0 | 23.0 | 2346.8 | 2050.5 | -12.6 | -832.0 | -187.5 |
| Miscellaneous manufactured articles | 756.2 | 796.4 | 5.3 | 608.4 | 687.2 | 13.0 | 147.8 | 109.2 |
| Commodities and transactions n.e.c. | 55.0 | 51.5 | -6.4 | 13.3 | 22.2 | 66.9 | 41.7 | 29.3 |

1 Data are preliminary as of 10.12.2013.

2 Non EU excluding Croatia.