

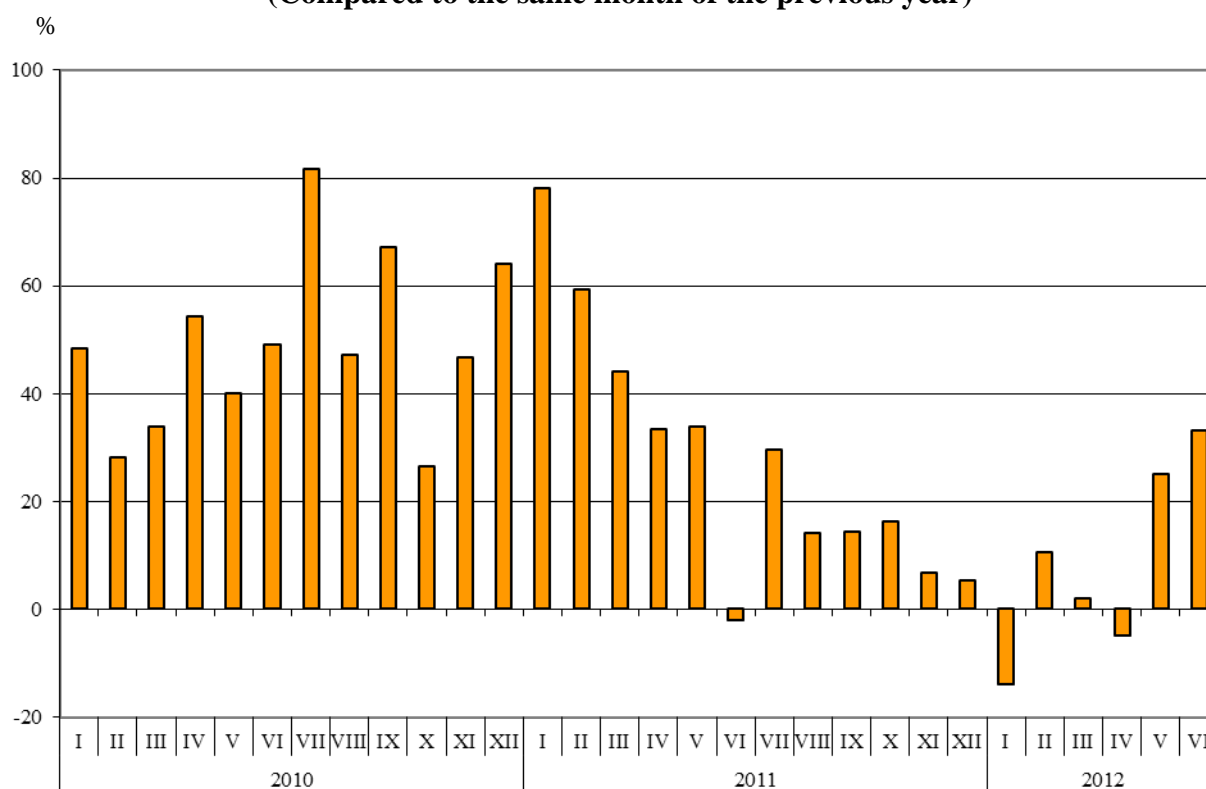


## BULGARIAN TRADE WITH THIRD COUNTRIES FOR THE PERIOD JANUARY - JUNE 2012 (PRELIMINARY DATA)

In the period **January - June 2012** the Bulgarian **exports to third countries** increased by 7.8% compared to the corresponding period of the previous year and amounted to 7.8 billion Levs (Annex, Table 1 and 2). The main trade partners of Bulgaria were Turkey, China, Russia, Serbia, The Former Yugoslav Republic of Macedonia that formed 46.3% of the exports to non EU countries (Annex, Table 3). The exports to United Arab Emirates, Israel, Canada, Syria, China and Brazil increased significantly while the most significant falls were reported on the exports to Singapore, Iran, India and Croatia.

In June 2012 the exports to third countries increased by 33.0% compared to the corresponding month of the previous year and amounted to 1.5 billion Levs.

**Figure 1. Nominal value<sup>1</sup> change of exports to non EU countries  
for the period 2010 – 2012  
(Compared to the same month of the previous year)**



**Bulgarian imports from third countries in the first six months of 2012** increased by 13.0% compared to the corresponding period of the previous year and added up to 10.2 billion Levs (at CIF prices) (Annex, Tables 1 and 2). The most significant growths were reported on the imports from Canada, Peru, Bosnia and Herzegovina, Iran and Brazil (Annex, Table 3) while the largest decreases were observed in the imports from Kazakhstan and Israel.

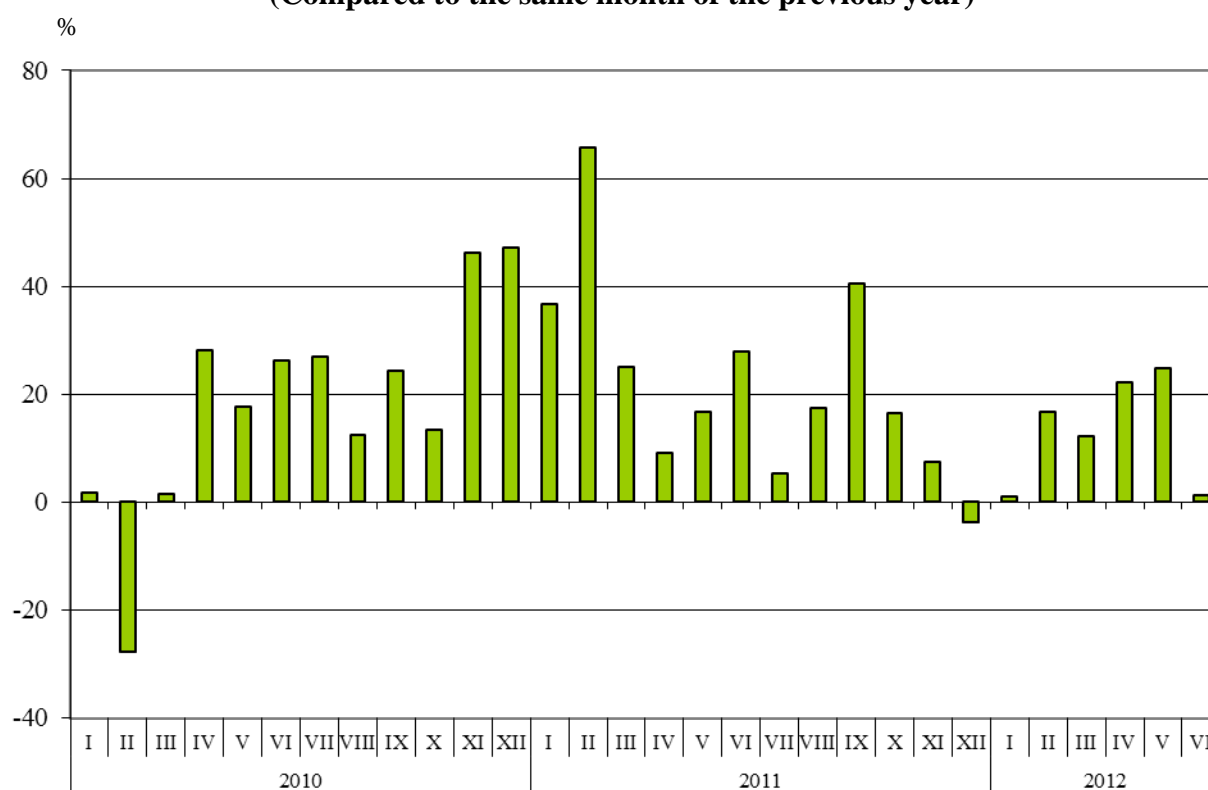
In June 2012 the Bulgarian imports from third countries grew by 1.2% compared to the corresponding month of the previous year and amounted to 1.7 billion Levs.

<sup>1</sup> Value changes at current prices.



**Figure 2. Nominal value<sup>1</sup> change of imports to non EU countries  
for the period 2010 – 2012  
(Compared to the same month of the previous year)**

www.nsi.bg



The foreign trade balance of Bulgaria (export FOB - import CIF) with third countries in the period January - June 2012 was negative and added up to 2 372.4 million Levs (Annex, Table 1). The trade balance at FOB /FOB prices (after elimination of transport and insurance costs on imports) was also negative and amounted to 1 858.4 million Levs.

In June 2012 the foreign trade balance of Bulgaria (export FOB - import CIF) with third countries was negative and amounted to 284.4 million Levs.

In the first six months of 2012 compared to the corresponding period of the previous year the largest growths in the **exports of Bulgaria to third countries** distributed according to the Standard International Trade Classification (Annex, Table 4) were recorded in the sections “Animal and vegetable oils, fats and waxes”<sup>2</sup>, “Beverages and tobacco” and “Crude materials, inedible (except fuel)”<sup>3</sup>.

<sup>1</sup> Value changes at current prices.

<sup>2</sup> The section includes the following divisions: animal oils and fats; fixed vegetable fats and oils, crude, refined or fractionated; animal or vegetable fats and oils, processed; waxes of animal or vegetable origin; inedible mixtures or preparations of animal or vegetable fats or oils, n.e.s.

<sup>3</sup> The section includes the following divisions: hides, skins and furskins, raw; oil seeds and oleaginous fruits; crude rubber (including synthetic and reclaimed); cork and wood; pulp and waste paper; textile fibres (other than wool tops and other combed wool) and their wastes (not manufactured into yarn or fabric); crude fertilizers, other than those of division 56, and crude minerals (excluding coal, petroleum and precious stones); metalliferous ores and metal scrap; crude animal and vegetable materials, n.e.s.



Falls were observed in the sections “Manufactured goods classified chiefly by material”<sup>1</sup>, “Machinery and transport equipment” and “Miscellaneous manufactured articles”<sup>2</sup>.

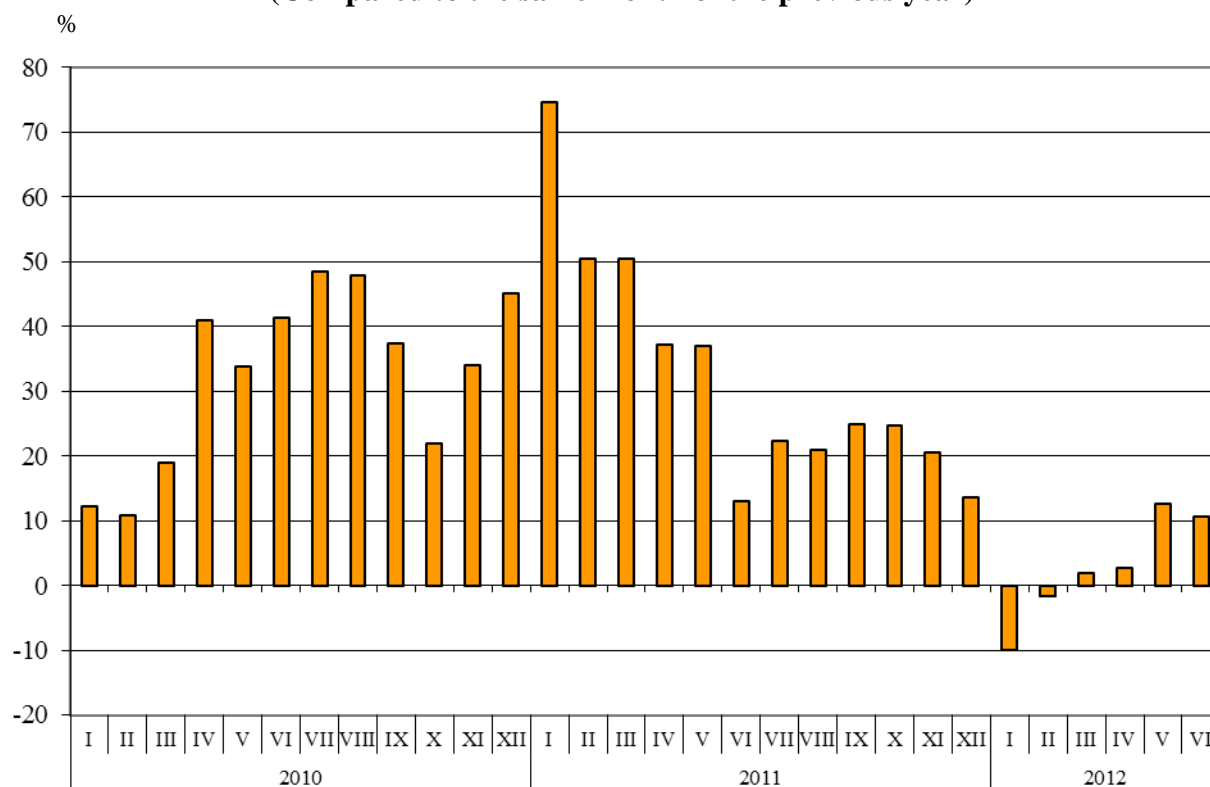
The largest growth in **imports from third countries** was reported in section “Machinery and transport equipment”. Fall was observed in section “Food and live animals”.

### Bulgarian trade with third countries and EU - total

In the first six months of 2012 the value of **all exported goods** from Bulgaria amounted to 19.4 billion Levs and compared to the corresponding period of 2011 the exports increased by 2.8% (Annex, Table 1 and 2).

In June 2012 the total exports added up to 3.5 billion Levs and grew by 10.7% compared to the corresponding month of the previous year.

**Figure 3. Nominal value<sup>3</sup> change of exports for the period 2010 – 2012  
(Compared to the same month of the previous year)**



<sup>1</sup> The section includes the following divisions: leather, leather manufactures, n.e.s. and dressed furskins; rubber manufactures, n.e.s.; cork and wood manufactures (excluding furniture); paper, paperboard and articles of paper pulp, of paper or of paperboard; textile yarn, fabrics, made-up articles, n.e.s., and related products; non-metallic mineral manufactures, n.e.s.; iron and steel; non-ferrous metals; manufactures of metals, n.e.s.

<sup>2</sup> The section includes the following divisions: prefabricated buildings; sanitary, plumbing, heating and lightning fixtures and fittings, n.e.s.; furniture and parts thereof; bedding, mattresses, mattress supports, cushions and similar stuffed furnishings; travel goods, handbags and similar containers; articles of apparel and clothing accessories; footwear; professional, scientific and controlling instruments and apparatus, n.e.s.; photographic apparatus, equipment and supplies and optical goods, n.e.s.; watches and clocks; miscellaneous manufactured articles, n.e.s.

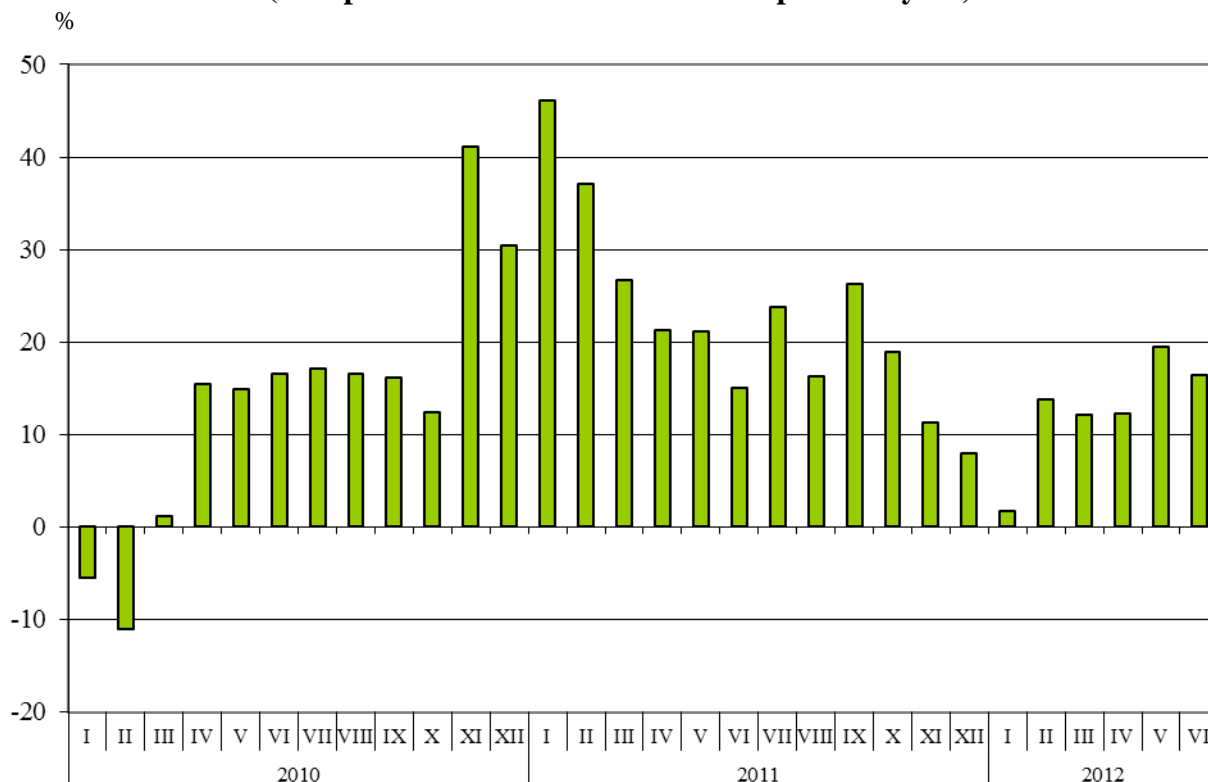
<sup>3</sup> Value changes at current prices.



The total value of **all the goods imported** in the country in the period **January - June 2012** amounted to 24.5 billion Levs (at CIF prices), or by 12.9% more than the corresponding period of the previous year (Annex, Table 1 and 2).

In June 2012 the total imports increased by 16.5% compared to June 2011 and added up to 4.4 billion Levs.

**Figure 4. Nominal value<sup>1</sup> change of imports for the period 2010 – 2012  
(Compared to the same month of the previous year)**



The **total foreign trade balance** (exports FOB - import CIF) was negative in the period January – June 2012 and amounted to 5 077.9 million Levs which was 2 263.8 million Levs more than the balance in the first six months of 2011 (Annex, Table 1 and 2). At FOB/FOB prices (after elimination of transport and insurance costs on imports) in the period January – June 2012 the total foreign trade balance was also negative and amounted to 3 892.5 million Levs.

In June 2012 the total foreign trade balance (exports FOB - import CIF) was negative and added up to 916.9 million Levs. The trade balance at FOB/FOB prices was also negative and amounted to 699.8 million Levs.

<sup>1</sup> Value changes at current prices.

Annex

Table 1

Exports, imports and trade balance for the period January - June 2011<sup>1</sup> and 2012<sup>1</sup> by months

(Million Levs)

Months/Periods	Exports - FOB			Imports - CIF			Imports - FOB <sup>2</sup>			Trade balance - FOB/CIF			Trade balance - FOB/FOB <sup>2</sup>		
	Total	EU	Non EU	Total	EU	Non EU	Total	EU	Non EU	Total	EU	Non EU	Total	EU	Non EU
I.2011	3117.3	1851.6	1265.7	3316.7	1956.9	1359.8	3153.8	1864.8	1289.0	-199.4	-105.3	-94.1	-36.5	-13.2	-23.3
II.2011	2937.1	1840.6	1096.5	3158.1	1889.5	1268.6	3010.3	1806.3	1204.0	-221.0	-48.9	-172.1	-73.2	34.3	-107.5
III.2011	3301.6	2005.6	1296.0	3769.4	2277.7	1491.7	3586.3	2170.3	1416.0	-467.8	-272.1	-195.7	-284.7	-164.7	-120.0
<b>I - III.2011</b>	<b>9356.0</b>	<b>5697.8</b>	<b>3658.2</b>	<b>10244.2</b>	<b>6124.1</b>	<b>4120.1</b>	<b>9750.4</b>	<b>5841.4</b>	<b>3909.0</b>	<b>-888.2</b>	<b>-426.3</b>	<b>-461.9</b>	<b>-394.4</b>	<b>-143.6</b>	<b>-250.8</b>
IV.2011	3149.5	1854.9	1294.6	3794.5	2202.4	1592.1	3604.0	2096.7	1507.3	-645.0	-347.5	-297.5	-454.5	-241.8	-212.7
V.2011	3245.9	2037.5	1208.4	3894.4	2309.9	1584.5	3705.0	2204.0	1501.0	-648.5	-272.4	-376.1	-459.1	-166.5	-292.6
VI.2011	3121.4	2028.8	1092.6	3753.8	2036.6	1717.2	3570.8	1945.8	1625.0	-632.4	-7.8	-624.6	-449.4	83.0	-532.4
<b>IV - VI.2011</b>	<b>9516.8</b>	<b>5921.2</b>	<b>3595.6</b>	<b>11442.7</b>	<b>6548.9</b>	<b>4893.8</b>	<b>10879.8</b>	<b>6246.5</b>	<b>4633.3</b>	<b>-1925.9</b>	<b>-627.7</b>	<b>-1298.2</b>	<b>-1363.0</b>	<b>-325.3</b>	<b>-1037.7</b>
<b>I - VI.2011</b>	<b>18872.8</b>	<b>11619.0</b>	<b>7253.8</b>	<b>21686.9</b>	<b>12673.0</b>	<b>9013.9</b>	<b>20630.2</b>	<b>12087.9</b>	<b>8542.3</b>	<b>-2814.1</b>	<b>-1054.0</b>	<b>-1760.1</b>	<b>-1757.4</b>	<b>-468.9</b>	<b>-1288.5</b>
I.2012	2806.6	1718.3	1088.3	3374.4	2002.1	1372.3	3213.3	1908.5	1304.8	-567.8	-283.8	-284.0	-406.7	-190.2	-216.5
II.2012	2889.9	1677.3	1212.6	3594.9	2113.1	1481.8	3424.6	2017.1	1407.5	-705.0	-435.8	-269.2	-534.7	-339.8	-194.9
III.2012	3365.0	2042.5	1322.5	4226.8	2552.6	1674.2	4026.4	2434.2	1592.2	-861.8	-510.1	-351.7	-661.4	-391.7	-269.7
<b>I - III.2012</b>	<b>9061.5</b>	<b>5438.1</b>	<b>3623.4</b>	<b>11196.1</b>	<b>6667.8</b>	<b>4528.3</b>	<b>10664.3</b>	<b>6359.8</b>	<b>4304.5</b>	<b>-2134.6</b>	<b>-1229.7</b>	<b>-904.9</b>	<b>-1602.8</b>	<b>-921.7</b>	<b>-681.1</b>
IV.2012	3236.6	2006.5	1230.1	4261.7	2316.4	1945.3	4052.6	2211.3	1841.3	-1025.1	-309.9	-715.2	-816.0	-204.8	-611.2
V.2012	3652.4	2141.7	1510.7	4653.7	2675.1	1978.6	4426.3	2548.5	1877.8	-1001.3	-533.4	-467.9	-773.9	-406.8	-367.1
VI.2012	3454.6	2001.0	1453.6	4371.5	2633.5	1738.0	4154.4	2501.8	1652.6	-916.9	-632.5	-284.4	-699.8	-500.8	-199.0
<b>IV - VI.2012</b>	<b>10343.6</b>	<b>6149.2</b>	<b>4194.4</b>	<b>13286.9</b>	<b>7625.0</b>	<b>5661.9</b>	<b>12633.3</b>	<b>7261.6</b>	<b>5371.7</b>	<b>-2943.3</b>	<b>-1475.8</b>	<b>-1467.5</b>	<b>-2289.7</b>	<b>-1112.4</b>	<b>-1177.3</b>
<b>I - VI.2012</b>	<b>19405.1</b>	<b>11587.3</b>	<b>7817.8</b>	<b>24483.0</b>	<b>14292.8</b>	<b>10190.2</b>	<b>23297.6</b>	<b>13621.4</b>	<b>9676.2</b>	<b>-5077.9</b>	<b>-2705.5</b>	<b>-2372.4</b>	<b>-3892.5</b>	<b>-2034.1</b>	<b>-1858.4</b>

<sup>1</sup> Data are preliminary as of 09.08.2012.

<sup>2</sup> By data of BNB for the transport costs.



**Table 2**  
**Value changes of exports and imports for the period January - June 2012<sup>1</sup> compared to the same period of the previous year**

(Per cent)

Months/Periods	Exports - FOB			Imports - CIF			Imports - FOB		
	Total	EU	Non EU	Total	EU	Non EU	Total	EU	Non EU
I	-10.0	-7.2	-14.0	1.7	2.3	0.9	1.9	2.3	1.2
II	-1.6	-8.9	10.6	13.8	11.8	16.8	13.8	11.7	16.9
III	1.9	1.8	2.0	12.1	12.1	12.2	12.3	12.2	12.4
<b>I - III</b>	<b>-3.1</b>	<b>-4.6</b>	<b>-1.0</b>	<b>9.3</b>	<b>8.9</b>	<b>9.9</b>	<b>9.4</b>	<b>8.9</b>	<b>10.1</b>
IV	2.8	8.2	-5.0	12.3	5.2	22.2	12.4	5.5	22.2
V	12.5	5.1	25.0	19.5	15.8	24.9	19.5	15.6	25.1
VI	10.7	-1.4	33.0	16.5	29.3	1.2	16.3	28.6	1.7
<b>IV - VI</b>	<b>8.7</b>	<b>3.9</b>	<b>16.7</b>	<b>16.1</b>	<b>16.4</b>	<b>15.7</b>	<b>16.1</b>	<b>16.3</b>	<b>15.9</b>
<b>I - VI</b>	<b>2.8</b>	<b>-0.3</b>	<b>7.8</b>	<b>12.9</b>	<b>12.8</b>	<b>13.0</b>	<b>12.9</b>	<b>12.7</b>	<b>13.3</b>

<sup>1</sup>Data are preliminary as of 09.08.2012.



Table 3

Exports, imports and trade balance with main non EU partner countries<sup>1</sup>  
for the period January - June 2011<sup>2</sup> and 2012<sup>2</sup>

Countries	Exports - FOB			Imports - CIF			Trade balance - FOB/CIF	
	2011	2012	Change compared to the same period of the previous year - %	2011	2012	Change compared to the same period of the previous year - %	2011	2012
	Million Levs			Million Levs			Million Levs	
<b>Third countries -total</b>	<b>7253.8</b>	<b>7817.8</b>	<b>7.8</b>	<b>9013.9</b>	<b>10190.2</b>	<b>13.0</b>	<b>-1760.1</b>	<b>-2372.4</b>
of which:								
Albania	43.7	46.5	6.4	17.3	19.4	12.1	26.4	27.1
Bosnia and Herzegovina	37.7	32.9	-12.7	5.1	13.0	154.9	32.6	19.9
Brazil	36.4	59.1	62.4	59.5	131.7	121.3	-23.1	-72.6
Canada	47.0	119.1	153.4	18.5	52.3	182.7	28.5	66.8
China	284.3	544.9	91.7	590.8	843.1	42.7	-306.5	-298.2
Croatia	119.2	63.8	-46.5	27.0	28.0	3.7	92.2	35.8
Egypt	141.5	121.1	-14.4	28.5	48.4	69.8	113.0	72.7
FYR of Macedonia	424.0	394.6	-6.9	253.7	244.4	-3.7	170.3	150.2
Georgia	169.3	219.4	29.6	212.5	168.8	-20.6	-43.2	50.6
India	93.7	29.8	-68.2	59.3	72.2	21.8	34.4	-42.4
Indonesia	10.1	14.5	43.6	20.8	19.7	-5.3	-10.7	-5.2
Iran	63.0	16.7	-73.5	2.8	7.1	153.6	60.2	9.6
Israel	41.5	123.8	198.3	151.1	59.6	-60.6	-109.6	64.2
Japan	18.9	21.3	12.7	65.1	66.6	2.3	-46.2	-45.3
Kazakhstan	19.0	26.6	40.0	104.2	33.5	-67.9	-85.2	-6.9
Korea, Rep. of	83.1	132.1	59.0	111.1	109.1	-1.8	-28.0	23.0
Norway	32.6	31.5	-3.4	8.6	7.1	-17.4	24.0	24.4
Peru	2.3	2.3	0.0	33.7	92.2	173.6	-31.4	-89.9
Russian Fed.	468.0	512.0	9.4	3915.6	5058.6	29.2	-3447.6	-4546.6
Serbia	469.5	451.2	-3.9	233.1	229.9	-1.4	236.4	221.3
Singapore	68.1	6.6	-90.3	15.3	14.4	-5.9	52.8	-7.8
South Africa	119.1	80.8	-32.2	18.8	36.1	92.0	100.3	44.7
Switzerland	111.6	140.4	25.8	180.1	189.7	5.3	-68.5	-49.3
Syria	10.7	26.0	143.0	36.6	30.6	-16.4	-25.9	-4.6
Taiwan	22.2	24.2	9.0	53.1	72.6	36.7	-30.9	-48.4
Turkey	1811.7	1718.1	-5.2	1081.1	1114.2	3.1	730.6	603.9
Ukraine	148.5	148.8	0.2	929.0	624.0	-32.8	-780.5	-475.2
United Arab Emirates	29.2	166.0	468.5	57.6	76.0	31.9	-28.4	90.0
USA	258.9	277.3	7.1	192.9	178.6	-7.4	66.0	98.7
Viet-Nam	11.7	11.0	-6.0	16.5	30.1	82.4	-4.8	-19.1

<sup>1</sup> Partner country:

- In case of exports (or dispatches) is the country (or Member State) of final destination of the goods
- In case of imports (or arrivals) is the country (or Member State) of consignment of the goods.

<sup>2</sup> Data are preliminary as of 09.08.2012.



**Table 4**

**Exports, imports and trade balance with non EU countries by sections of SITC, rev.4  
for the period January - June 2011<sup>1</sup> and 2012<sup>1</sup>**

Sections by SITC	Exports - FOB			Imports - CIF			Trade balance - FOB/CIF	
	2011	2012	Change compared to the same period of the previous year - %	2011	2012	Change compared to the same period of the previous year - %	2011	2012
	Million Levs			Million Levs			Million Levs	
<b>Third countries -total</b>	<b>7253.8</b>	<b>7817.8</b>	<b>7.8</b>	<b>9013.9</b>	<b>10190.2</b>	<b>13.0</b>	<b>-1760.1</b>	<b>-2372.4</b>
Food and live animals	341.8	416.4	21.8	274.7	232.5	-15.4	67.1	183.9
Beverages and tobacco	202.6	271.4	34.0	66.7	77.6	16.3	135.9	193.8
Crude materials, inedible (except fuel)	773.2	993.4	28.5	829.1	892.3	7.6	-55.9	101.1
Mineral fuel, lubricants and related materials	2078.8	2180.2	4.9	4498.2	5151.6	14.5	-2419.4	-2971.4
Animals and vegetable oils, fats and waxes	27.0	39.0	44.4	24.3	29.8	22.6	2.7	9.2
Chemical and related products n.e.c.	805.2	904.6	12.3	546.8	592.7	8.4	258.4	311.9
Manufactured goods classified chiefly by material	1708.5	1689.0	-1.1	1410.8	1430.7	1.4	297.7	258.3
Machinery and transport equipment	855.7	846.9	-1.0	1036.3	1417.2	36.8	-180.6	-570.3
Miscellaneous manufactured articles	452.2	448.4	-0.8	316.8	357.5	12.8	135.4	90.9
Commodities and transactions n.e.c.	8.8	28.5	223.9	10.2	8.3	-18.6	-1.4	20.2

<sup>1</sup> Data are preliminary as of 09.08.2012.