

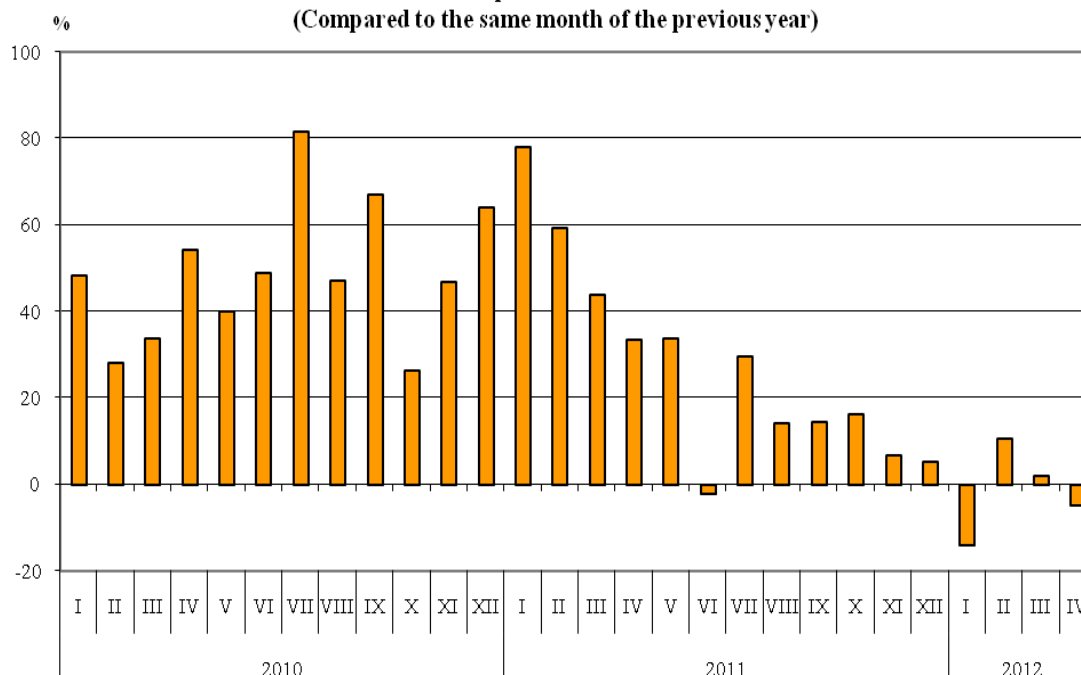


BULGARIAN TRADE WITH THIRD COUNTRIES FOR THE PERIOD JANUARY - APRIL 2012 (PRELIMINARY DATA)

In the period **January - April 2012** the Bulgarian **exports to third countries** decreased by 2.0% compared to the corresponding period of the previous year and **amounted to 4.9 billion Levs** (Table 1.1 and 1.2). The main trade partners of Bulgaria were Turkey, China, Russia, Serbia, The Former Yugoslav Republic of Macedonia and United Arab Emirates, that formed 50.6% of the exports to non EU countries (Table 2). The exports to United Arab Emirates, Canada, Syria and Brazil increased significantly while the most significant falls were reported on the exports to Singapore, India, South Africa and Iran.

In April 2012 the exports to third countries decreased by 5.0% compared to the corresponding month of the previous year and amounted to **1.2 billion Levs**.

**Figure 1. Nominal value* change of exports to non EU countries
for the period 2010 - 2012
(Compared to the same month of the previous year)**

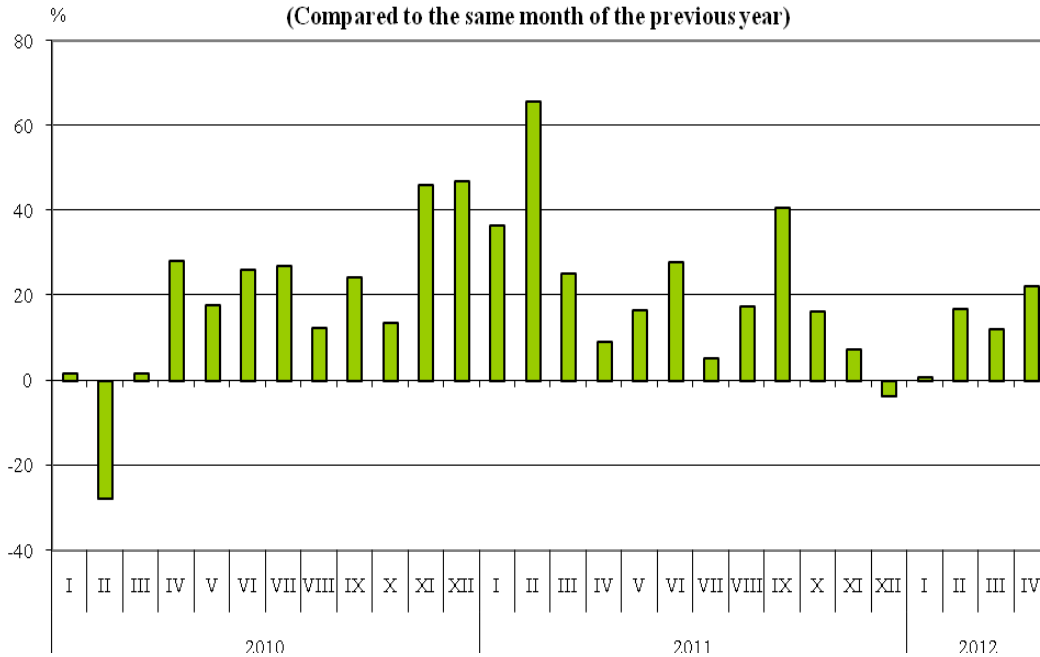


Bulgarian imports from third countries in the first fourth months of 2012 increased by 13.3% compared to the corresponding period of the previous year and **added up to 6.5 billion Levs** (at CIF prices) (Tables 1.1 and 1.2). The most significant growths were reported on the imports from Peru, Bosnia and Herzegovina and Brazil (Table 2) while the largest decreases were observed in the imports from Kazakhstan, Israel and Ukraine.

In April 2012 the Bulgarian imports from third countries grew by 22.2% compared to the corresponding month of the previous year and added up to over **1.9 billion Levs**.



Figure 2. Nominal value* change of imports to non EU countries
for the period 2010 - 2012
(Compared to the same month of the previous year)



The foreign trade balance of Bulgaria (export FOB - import CIF) **with third countries** in the period January - April 2012 was negative and added up to 1620.1 million Levs (Table 1.1). The trade balance at FOB /FOB prices (after elimination of transport and insurance costs on imports) was also negative and amounted to 1292.3 million Levs.

In April 2012 the foreign trade balance of Bulgaria (export FOB - import CIF) with third countries was negative and amounted to 715.2 million Levs.

In the **first four months of 2012** compared to the corresponding period of the previous year, the largest growth **in the exports** of Bulgaria to third countries, distributed according to the Standard International Trade Classification (Table 3) was recorded in the section “Animal and vegetable oils, fats and waxes”¹ and the most notable fall was observed in the section “Mineral fuels, lubricants and related materials”.

¹ The section includes the following divisions: Animal oils and fats; Fixed vegetable fats and oils, crude, refined or fractionated; Animal or vegetable fats and oils processed; waxes of animal or vegetable origin; inedible mixtures or preparations of animal or vegetable fats or oils, n.e.s.



www.nsi.bg

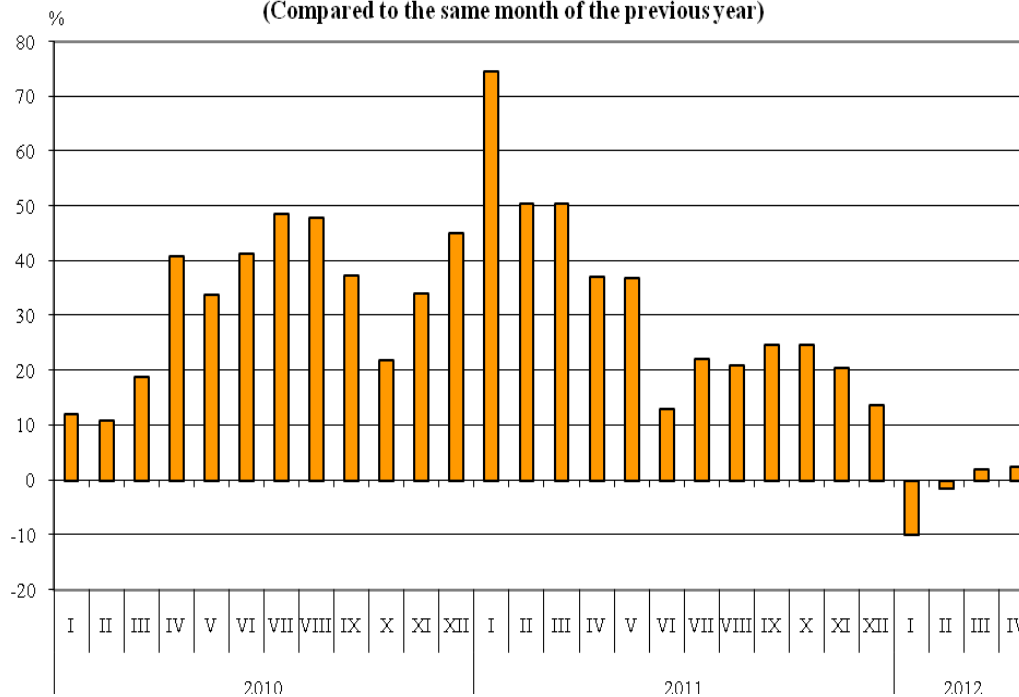
The largest growth in imports from third countries was reported in section “Machinery and transport equipment” while the most significant fall was reported in section “Food and live animals”.

Bulgarian trade with third countries and EU - total

In the first four months of 2012 the value of all exported goods from Bulgaria amounted to 12.3 billion Levs and compared to the corresponding period of 2011 the exports decreased by 1.7% (Table 1.1 and 1.2).

In April 2012 the total exports added up to over 3.2 billion Levs and grew by 2.5% compared to the corresponding month of 2011.

Figure 3. Nominal value* change of exports for the period 2010 - 2012
(Compared to the same month of the previous year)

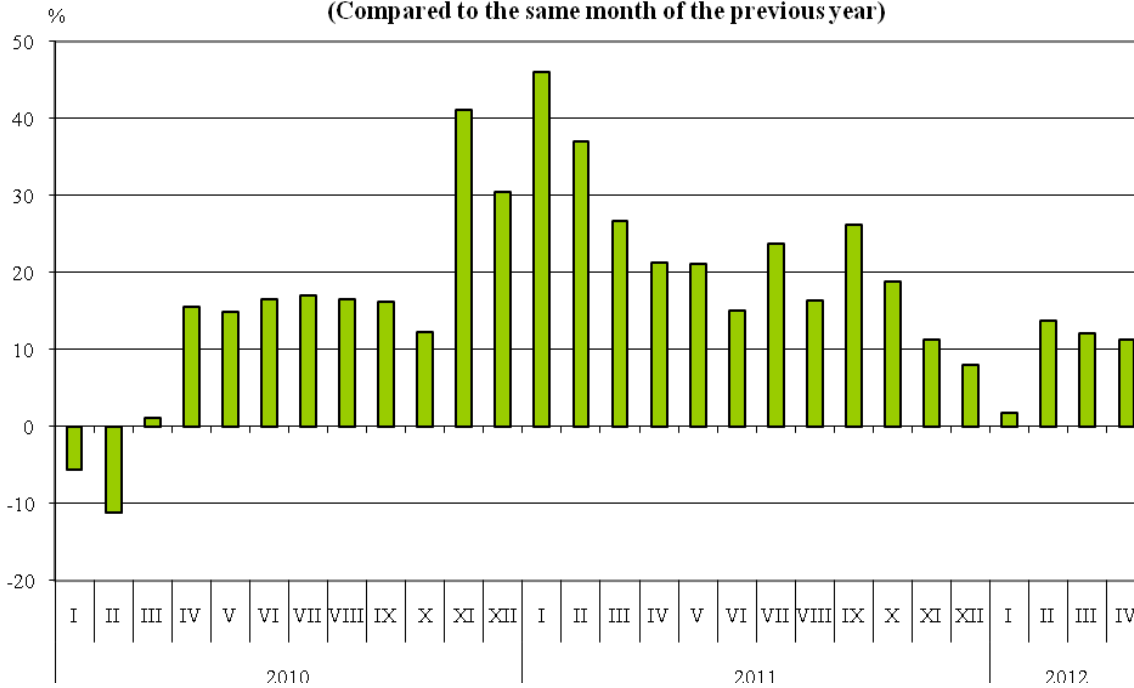


The total value of all the goods imported in the country in the period January - April 2012 amounted to 15.4 billion Levs (at CIF prices), or by 9.8% more than corresponding period of the previous year (Table 1.1 and 1.2).

In April 2012 the total imports increased by 11.2% compared to the corresponding month of the previous year and added up to 4.2 billion Levs.



**Figure 4. Nominal value* change of imports for the period 2010 - 2012
(Compared to the same month of the previous year)**



The total foreign trade balance (exports FOB - import CIF) was negative in the period January – April 2012 and amounted to 3125.7 million Levs which was 1592.5 million Levs more than the balance in the first four months of 2011 (Table 1.1 and 1.2). At FOB/FOB prices (after elimination of transport and insurance costs on imports) in the period January – April 2012 the total foreign trade balance was also negative and amounted to 2376.1 million Levs.

In April 2012 the total foreign trade balance (exports FOB - import CIF) was negative and added up to 991.1 million Levs. The trade balance at FOB/FOB prices was also negative and amounted to 773.3 million Levs.

* Value changes at current prices.

ANNEX

Table 1.1

Exports, imports and trade balance for the period January - April 2011¹ and 2012¹ by months

(Million Levs)

Months/Periods	Exports - FOB			Imports - CIF			Imports - FOB ²			Trade balance - FOB/CIF			Trade balance - FOB/FOB ²		
	Total	EU	Non EU	Total	EU	Non EU	Total	EU	Non EU	Total	EU	Non EU	Total	EU	Non EU
I.2011	3117.3	1851.6	1265.7	3316.7	1956.9	1359.8	3153.8	1864.8	1289.0	-199.4	-105.3	-94.1	-36.5	-13.2	-23.3
II.2011	2937.1	1840.6	1096.5	3158.1	1889.5	1268.6	3010.3	1806.3	1204.0	-221.0	-48.9	-172.1	-73.2	34.3	-107.5
III.2011	3301.6	2005.6	1296.0	3769.4	2277.7	1491.7	3586.3	2170.3	1416.0	-467.8	-272.1	-195.7	-284.7	-164.7	-120.0
I-III.2011	9356.0	5697.8	3658.2	10244.2	6124.1	4120.1	9750.4	5841.4	3909.0	-888.2	-426.3	-461.9	-394.4	-143.6	-250.8
IV.2011	3149.5	1854.9	1294.6	3794.5	2202.4	1592.1	3604.0	2096.7	1507.3	-645.0	-347.5	-297.5	-454.5	-241.8	-212.7
I-IV.2011	12505.5	7552.7	4952.8	14038.7	8326.5	5712.2	13354.4	7938.1	5416.3	-1533.2	-773.8	-759.4	-848.9	-385.4	-463.5
I.2012	2806.6	1718.3	1088.3	3374.4	2002.1	1372.3	3213.3	1908.5	1304.8	-567.8	-283.8	-284.0	-406.7	-190.2	-216.5
II.2012	2889.9	1677.3	1212.6	3594.9	2113.1	1481.8	3424.6	2017.1	1407.5	-705.0	-435.8	-269.2	-534.7	-339.8	-194.9
III.2012	3365.0	2042.5	1322.5	4226.8	2552.6	1674.2	4026.4	2434.2	1592.2	-861.8	-510.1	-351.7	-661.4	-391.7	-269.7
I-III.2012	9061.5	5438.1	3623.4	11196.1	6667.8	4528.3	10664.3	6359.8	4304.5	-2134.6	-1229.7	-904.9	-1602.8	-921.7	-681.1
IV.2012	3229.6	1999.5	1230.1	4220.7	2275.4	1945.3	4002.9	2161.6	1841.3	-991.1	-275.9	-715.2	-773.3	-162.1	-611.2
I-IV.2012	12291.1	7437.6	4853.5	15416.8	8943.2	6473.6	14667.2	8521.4	6145.8	-3125.7	-1505.6	-1620.1	-2376.1	-1083.8	-1292.3

¹ Data are preliminary as of 11.06.2012.

² By data of BNB for the transport costs.

Table 1.2

Value changes of exports and imports for the period January - April 2012¹ compared to the same period of the previous year

(Per cent)

Months/Periods	Exports - FOB			Imports - CIF			Imports - FOB		
	Total	EU	Non EU	Total	EU	Non EU	Total	EU	Non EU
I	-10.0	-7.2	-14.0	1.7	2.3	0.9	1.9	2.3	1.2
II	-1.6	-8.9	10.6	13.8	11.8	16.8	13.8	11.7	16.9
III	1.9	1.8	2.0	12.1	12.1	12.2	12.3	12.2	12.4
I-III	-3.1	-4.6	-1.0	9.3	8.9	9.9	9.4	8.9	10.1
IV	2.5	7.8	-5.0	11.2	3.3	22.2	11.1	3.1	22.2
I-IV	-1.7	-1.5	-2.0	9.8	7.4	13.3	9.8	7.3	13.5

¹ Data are preliminary as of 11.06.2012.



Table 2

Exports, imports and trade balance with main non EU partner countries¹
for the period January - April 2011² and 2012²

Countries	Exports - FOB			Imports - CIF			Trade balance - FOB/CIF	
	2011	2012	Change compared to the same period of the previous year -%	2011	2012	Change compared to the same period of the previous year -%	2011	2012
	Million Levs			Million Levs			Million Levs	
Third countries - total	4952.8	4853.5	-2.0	5712.2	6473.6	13.3	-759.4	-1620.1
of which:								
Albania	32.2	31.7	-1.6	12.7	13.1	3.1	19.5	18.6
Bosnia and Herzegovina	24.3	22.5	-7.4	3.1	8.8	183.9	21.2	13.7
Brazil	21.7	56.7	161.3	51.0	125.1	145.3	-29.3	-68.4
Canada	31.0	87.1	181.0	10.2	10.0	-2.0	20.8	77.1
China	201.6	381.6	89.3	367.7	537.4	46.2	-166.1	-155.8
Croatia	72.3	43.3	-40.1	15.2	15.2	0.0	57.1	28.1
Egypt	88.7	74.6	-15.9	25.7	37.8	47.1	63.0	36.8
Georgia	102.6	148.8	45.0	117.5	139.1	18.4	-14.9	9.7
India	76.9	19.6	-74.5	34.3	42.9	25.1	42.6	-23.3
Indonesia	7.6	11.0	44.7	10.7	10.9	1.9	-3.1	0.1
Iran	23.0	10.6	-53.9	2.6	4.3	65.4	20.4	6.3
Israel	29.7	25.2	-15.2	98.5	46.6	-52.7	-68.8	-21.4
Japan	10.4	11.2	7.7	47.5	45.7	-3.8	-37.1	-34.5
Kazakhstan	12.0	12.7	5.8	99.1	23.5	-76.3	-87.1	-10.8
Korea, Rep. of	55.3	87.0	57.3	44.0	68.5	55.7	11.3	18.5
Norway	23.9	22.9	-4.2	4.4	3.7	-15.9	19.5	19.2
Peru	1.8	1.7	-5.6	24.0	83.5	247.9	-22.2	-81.8
Russian Fed.	316.9	325.0	2.6	2547.1	3166.6	24.3	-2230.2	-2841.6
Serbia	319.4	286.8	-10.2	145.0	137.8	-5.0	174.4	149.0
Singapore	65.3	4.0	-93.9	11.8	9.0	-23.7	53.5	-5.0
South Africa	115.4	38.1	-67.0	13.4	22.6	68.7	102.0	15.5
Switzerland	81.0	91.3	12.7	120.4	123.2	2.3	-39.4	-31.9
Syria	7.6	20.1	164.5	19.3	20.8	7.8	-11.7	-0.7
Taiwan	15.2	15.4	1.3	35.0	49.8	42.3	-19.8	-34.4
The former Yugoslav Rep. of Macedonia	275.8	261.1	-5.3	161.6	148.9	-7.9	114.2	112.2
Turkey	1275.8	1047.7	-17.9	642.9	660.7	2.8	632.9	387.0
Ukraine	101.6	77.9	-23.3	595.3	380.4	-36.1	-493.7	-302.5
United Arab Emirates	18.7	155.2	729.9	46.9	38.5	-17.9	-28.2	116.7
USA	178.3	132.1	-25.9	105.1	110.1	4.8	73.2	22.0
Viet-Nam	7.8	5.9	-24.4	11.6	19.3	66.4	-3.8	-13.4

¹ Partner country:

- In case of exports (or dispatches) is the country (or Member State) of final destination of the goods
- In case of imports (or arrivals) is the country (or Member State) of consignment of the goods.

² Data are preliminary as of 11.06.2012.



Table 3

Exports, imports and trade balance with non EU countries by sections of SITC, rev.4
for the period January - April 2011¹ and 2012¹

Sections by SITC	Exports - FOB			Imports - CIF			Trade balance - FOB/CIF	
	2011	2012	Change compared to the same period of the previous year -%	2011	2012	Change compared to the same period of the previous year -%	2011	2012
	Million Levs			Million Levs			Million Levs	
Third countries - total	4952.8	4853.5	-2.0	5712.2	6473.6	13.3	-759.4	-1620.1
Food and live animals	244.3	262.0	7.2	182.8	160.1	-12.4	61.5	101.9
Beverages and tobacco	143.7	169.2	17.7	43.4	39.5	-9.0	100.3	129.7
Crude materials, inedible (except fuel)	503.6	662.6	31.6	476.9	602.1	26.3	26.7	60.5
Mineral fuel, lubricants and related materials	1419.2	1240.9	-12.6	2884.1	3228.5	11.9	-1464.9	-1987.6
Animals and vegetable oils, fats and waxes	17.2	25.8	50.0	15.8	16.8	6.3	1.4	9.0
Chemical and related products n.e.c.	539.3	581.0	7.7	342.2	371.9	8.7	197.1	209.1
Manufactured goods classified chiefly by material	1198.4	1077.1	-10.1	897.5	877.9	-2.2	300.9	199.2
Machinery and transport equipment	561.9	518.7	-7.7	660.1	948.5	43.7	-98.2	-429.8
Miscellaneous manufactured articles	319.9	300.1	-6.2	202.4	222.2	9.8	117.5	77.9
Commodities and transactions n.e.c.	5.3	16.1	203.8	7.0	6.1	-12.9	-1.7	10.0

¹ Data are preliminary as of 11.06.2012.