

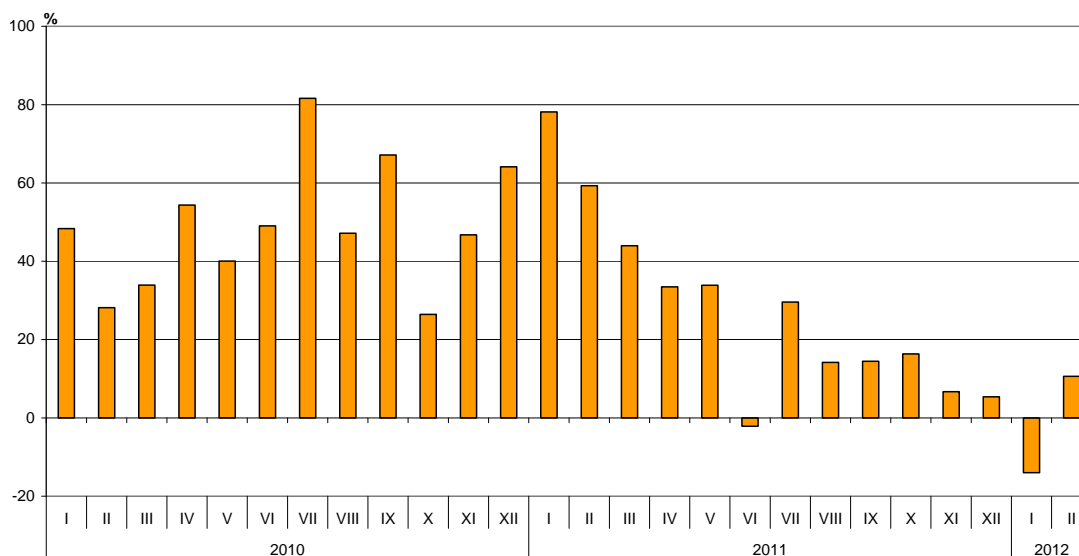


## BULGARIAN TRADE WITH THIRD COUNTRIES FOR THE PERIOD JANUARY - FEBRUARY 2012 (PRELIMINARY DATA)

In the period **January - February 2012** the Bulgarian **exports to third countries** decreased by 2.6% compared to the corresponding period of the previous year and **amounted to 2.3 billion leva** (Table 1.1 and 1.2). The main trade partners of Bulgaria were Turkey, China, United Arab Emirates, Russia, Serbia and The Former Yugoslav Republic of Macedonia, that formed 51.2% of the total exports to non EU countries (Table 2). The exports to United Arab Emirates, Canada, Syria and Brazil increased significantly. The most significant falls were reported on the exports to Singapore, South Africa, India and Croatia.

**In February 2012 the exports to third countries increased by 10.6%** compared to the corresponding month of the previous year and amounted to **1.2 billion leva**.

**Figure 1. Nominal growth of exports to non EU countries for the period  
2010 - 2012  
(Compared to the same month of the previous year)**

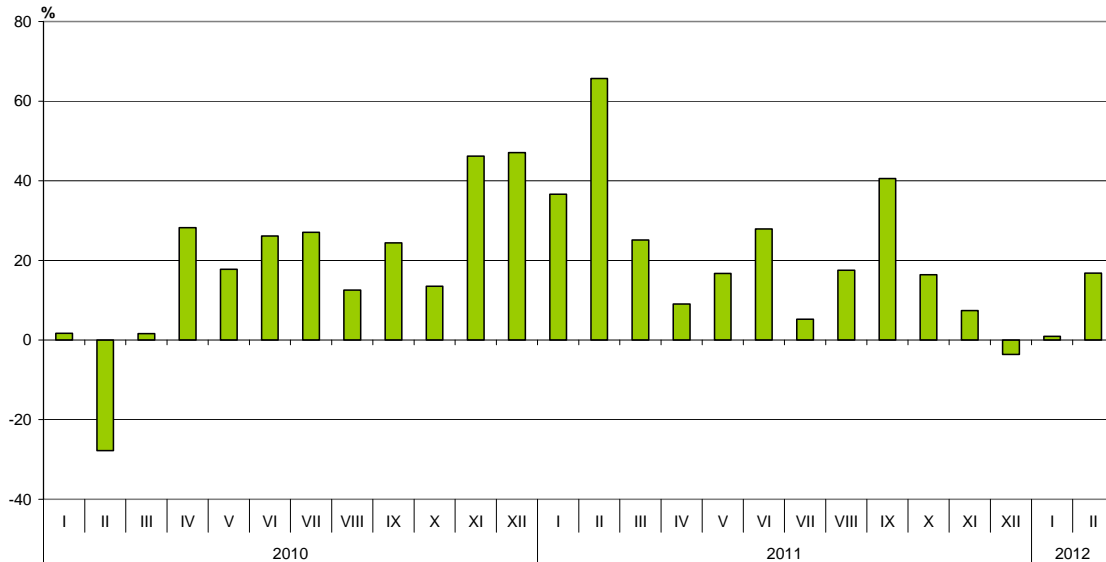


**Bulgarian imports from third countries in the first two months of 2012 increased by 8.6%** compared to the corresponding period of the previous year and **amounted to 2.9 billion leva** (at CIF prices) (Tables 1.1 and 1.2). The most significant growths were reported on the imports from Kazakhstan, Bosnia and Herzegovina, Syria and Republic of Korea (Table 2). The largest decreases were observed in the imports from Brazil, United Arab Emirates and Ukraine.

**In February 2012 the Bulgarian imports from third countries increased by 16.8%** compared to the corresponding month of the previous year and **amounted almost to 1.5 billion leva**.



Figure 2. Nominal growth of imports to non EU countries for the period  
2010 - 2012  
(Compared to the same month of the previous year)



**The foreign trade balance of Bulgaria** (export FOB - import CIF) **with third countries** in the period January - February 2012 was negative and amounted to 553.2 million leva (Table 1.1). The trade balance at FOB /FOB prices (after elimination of transport and insurance costs on imports) was also negative and amounted to 414.4 million leva.

**In February 2012** the foreign trade balance of Bulgaria (export FOB - import CIF) with third countries was negative and amounted to 269.2 million leva.

In the **first two months of 2012** compared to the corresponding period of the previous year, the largest growth **in the exports** of Bulgaria to third countries, distributed according to the Standard International Trade Classification (Table 3) was recorded in the section “Animal and vegetable oils, fats and waxes”<sup>1</sup>. The most notable fall was observed in section “Mineral fuels, lubricants and related materials”.

The largest growth **in imports from third countries** was reported in section “Machinery and transport equipment” and the most significant fall was accounted for section “Food and live animals”.

## Bulgarian trade with third countries and EU - total

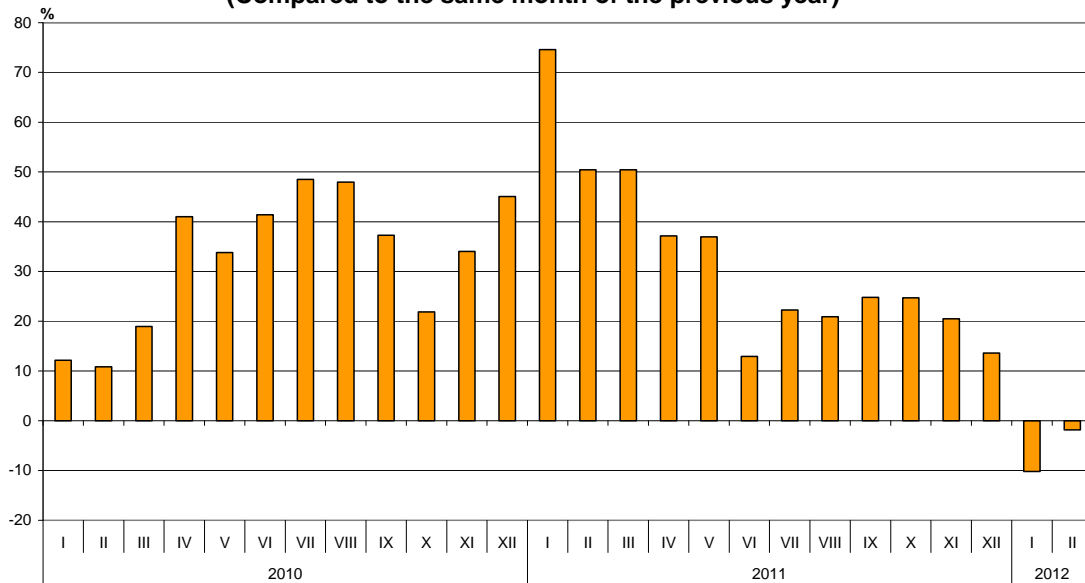
<sup>1</sup> The section includes the following divisions: Animal oils and fats; Fixed vegetable fats and oils, crude, refined or fractionated; Animal or vegetable fats and oils processed; waxes of animal or vegetable origin; inedible mixtures or preparations of animal or vegetable fats or oils, n.e.s.



**In the period January -February 2012 the total value of the exported goods reached almost to 5.7 billion levs.** Compared to the corresponding period of 2011 the exports decreased by 6.1% (Table 1.1 and 1.2).

**In February 2012** the total exports amounted to 2.9 billion levs and decreased by 1.8% compared to the corresponding month of 2011.

**Figure 3. Nominal growth of exports for the period 2010 - 2012 (Compared to the same month of the previous year)**

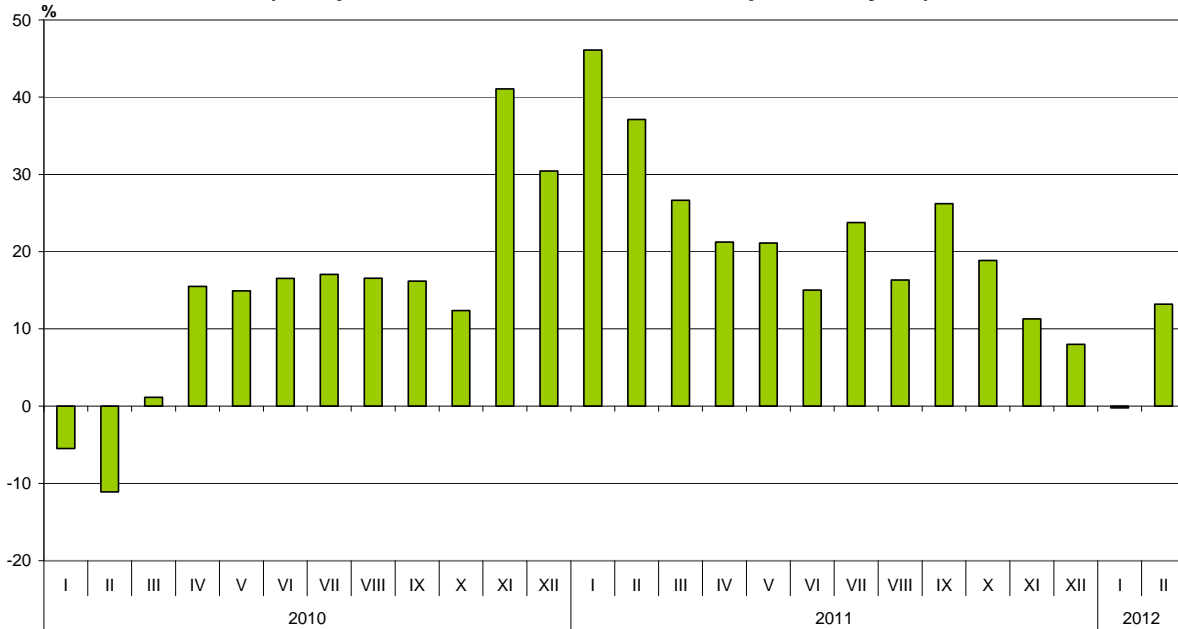


**The total imported goods in the period January - February 2012** were for 6.9 billion levs (at CIF prices), or by 7.2% more than corresponding period of the previous year (Table 1.1 and 1.2).

**In February 2012** the total imports increased by 13.2% compared to the corresponding month of the previous year and amounted to over **3.5 billion levs**.



**Figure 4. Nominal growth of imports for the period  
2010 - 2012  
(Compared to the same month of the previous year)**



**The total foreign trade balance (exports FOB - import CIF)** was negative in the period January – February 2012 and amounted to 1252.5 million leva which was 832.1 million leva more than the balance in the first two months of 2011 (Table 1.1 and 1.2). **At FOB/FOB prices** (after elimination of transport and insurance costs on imports) in the period January – February 2012 the total foreign trade balance was also negative and amounted to 912.6 million leva.

In **February 2012** the total foreign trade balance (exports FOB - import CIF) was negative and amounted to 692.0 million leva. The trade balance at **FOB/FOB prices** was also negative and reached to 513.1 million leva.

## ANNEX

Table 1.1

Exports, imports and trade balance for the period January-February 2011<sup>1</sup> and 2012<sup>1</sup> by months

(Million Levs)

Months	Exports - FOB			Imports - CIF			Imports - FOB <sup>2</sup>			Trade balance - FOB/CIF			Trade balance - FOB/FOB <sup>2</sup>		
	Total	EU	Non EU	Total	EU	Non EU	Total	EU	Non EU	Total	EU	Non EU	Total	EU	Non EU
I.2011	3117.3	1851.6	1265.7	3316.7	1956.9	1359.8	3153.8	1864.8	1289.0	-199.4	-105.3	-94.1	-36.5	-13.2	-23.3
II.2011	2937.1	1840.6	1096.5	3158.1	1889.5	1268.6	3010.3	1806.3	1204.0	-221.0	-48.9	-172.1	-73.2	34.3	-107.5
<b>I-II.2011</b>	<b>6054.4</b>	<b>3692.2</b>	<b>2362.2</b>	<b>6474.8</b>	<b>3846.4</b>	<b>2628.4</b>	<b>6164.1</b>	<b>3671.1</b>	<b>2493.0</b>	<b>-420.4</b>	<b>-154.2</b>	<b>-266.2</b>	<b>-109.7</b>	<b>21.1</b>	<b>-130.8</b>
I.2012	2804.4	1716.1	1088.3	3364.9	1992.6	1372.3	3203.9	1899.1	1304.8	-560.5	-276.5	-284.0	-399.5	-183.0	-216.5
II.2012	2882.8	1670.2	1212.6	3574.8	2093.0	1481.8	3395.9	1988.4	1407.5	-692.0	-422.8	-269.2	-513.1	-318.2	-194.9
<b>I-II.2012</b>	<b>5687.2</b>	<b>3386.3</b>	<b>2300.9</b>	<b>6939.7</b>	<b>4085.6</b>	<b>2854.1</b>	<b>6599.8</b>	<b>3887.5</b>	<b>2712.3</b>	<b>-1252.5</b>	<b>-699.3</b>	<b>-553.2</b>	<b>-912.6</b>	<b>-501.2</b>	<b>-411.4</b>

<sup>1</sup> Data are preliminary as of 09.04.2012.

<sup>2</sup> By data of BNB for the transport costs.

Table 1.2

Growth of exports and imports for the period January-February 2012<sup>1</sup> compared to the same month of the previous year

(Per cent)

Months	Exports - FOB			Imports - CIF			Imports - FOB		
	Total	EU	Non EU	Total	EU	Non EU	Total	EU	Non EU
I	-10.0	-7.3	-14.0	1.5	1.8	0.9	1.6	1.8	1.2
II	-1.8	-9.3	10.6	13.2	10.8	16.8	12.8	10.1	16.9
<b>I-II</b>	<b>-6.1</b>	<b>-8.3</b>	<b>-2.6</b>	<b>7.2</b>	<b>6.2</b>	<b>8.6</b>	<b>7.1</b>	<b>5.9</b>	<b>8.8</b>

<sup>1</sup> Data are preliminary as of 09.04.2012.



Table 2

**Exports, imports and trade balance with main non EU partner countries<sup>1</sup>**  
**for the period January-February 2011<sup>2</sup> and 2012<sup>2</sup>**

Countries	Exports - FOB			Imports - CIF			Trade balance - FOB/CIF	
	2011	2012	Growth - %	2011	2012	Growth - %	2011	2012
	Million Levs			Million Levs			Million Levs	
<b>Third countries -total</b>	<b>2362.2</b>	<b>2300.9</b>	<b>-2.6</b>	<b>2628.4</b>	<b>2854.1</b>	<b>8.6</b>	<b>-266.2</b>	<b>-553.2</b>
of which:								
Albania	16.1	16.2	0.6	6.9	5.3	-23.2	9.2	10.9
Bosnia and Herzegovina	10.9	7.7	-29.4	1.7	4.5	164.7	9.2	3.2
Brazil	6.7	16.2	141.8	42.2	11.6	-72.5	-35.5	4.6
Canada	8.6	43.0	400.0	4.1	4.8	17.1	4.5	38.2
China	109.7	219.6	100.2	178.2	257.2	44.3	-68.5	-37.6
Croatia	38.2	19.5	-49.0	6.3	5.2	-17.5	31.9	14.3
Egypt	38.1	46.0	20.7	15.5	23.2	49.7	22.6	22.8
Georgia	49.7	68.0	36.8	63.3	51.4	-18.8	-13.6	16.6
India	37.1	8.2	-77.9	16.8	24.4	45.2	20.3	-16.2
Indonesia	5.2	5.2	0.0	4.9	4.8	-2.0	0.3	0.4
Iran	4.2	3.5	-16.7	1.6	1.3	-18.8	2.6	2.2
Israel	16.9	12.1	-28.4	26.4	19.8	-25.0	-9.5	-7.7
Japan	4.2	4.5	7.1	20.9	22.0	5.3	-16.7	-17.5
Kazakhstan	5.4	6.1	13.0	4.1	11.2	173.2	1.3	-5.1
Korea, Rep. of	20.8	32.5	56.3	23.6	43.9	86.0	-2.8	-11.4
Norway	12.0	13.8	15.0	2.2	1.9	-13.6	9.8	11.9
Peru	0.7	0.8	14.3	12.1	8.5	-29.8	-11.4	-7.7
Russian Fed.	142.7	132.9	-6.9	1132.2	1434.3	26.7	-989.5	-1301.4
Serbia	142.3	114.4	-19.6	61.6	58.8	-4.5	80.7	55.6
Singapore	63.0	1.6	-97.5	6.8	5.4	-20.6	56.2	-3.8
South Africa	113.4	3.4	-97.0	5.7	9.0	57.9	107.7	-5.6
Switzerland	37.1	43.4	17.0	61.9	58.6	-5.3	-24.8	-15.2
Syria	3.9	13.4	243.6	8.6	18.4	114.0	-4.7	-5.0
Taiwan	6.5	7.4	13.8	17.2	31.4	82.6	-10.7	-24.0
The former Yugoslav Rep. of Macedonia	135.0	110.0	-18.5	75.0	68.3	-8.9	60.0	41.7
Turkey	643.7	460.4	-28.5	284.5	294.6	3.6	359.2	165.8
Ukraine	40.5	38.1	-5.9	356.9	161.1	-54.9	-316.4	-123.0
United Arab Emirates	6.7	141.1	2006.0	23.8	10.4	-56.3	-17.1	130.7
USA	80.1	73.8	-7.9	59.0	56.0	-5.1	21.1	17.8
Viet-Nam	3.0	2.8	-6.7	6.8	8.5	25.0	-3.8	-5.7

<sup>1</sup> Partner country:

- In case of exports (or dispatches) is the country (or Member State) of final destination of the goods
- In case of imports (or arrivals) is the country (or Member State) of consignment of the goods.

<sup>2</sup> Data are preliminary as of 09.04.2012.



**Table 3**

**Exports, imports and trade balance with non EU countries by sections of SITC, rev.4  
for the period January-February 2011<sup>1</sup> and 2012<sup>1</sup>**

Sections by SITC	Exports - FOB			Imports - CIF			Trade balance - FOB/CIF	
	2011	2012	Growth - %	2011	2012	Growth - %	2011	2012
	Million Levs			Million Levs			Million Levs	
<b>Third countries -total</b>	<b>2362.2</b>	<b>2300.9</b>	<b>-2.6</b>	<b>2628.4</b>	<b>2854.1</b>	<b>8.6</b>	<b>-266.2</b>	<b>-553.2</b>
Food and live animals	116.3	136.7	17.5	103.2	79.2	-23.3	13.1	57.5
Beverages and tobacco	75.7	80.8	6.7	22.9	19.7	-14.0	52.8	61.1
Crude materials, inedible (except fuel)	233.6	311.8	33.5	231.5	253.5	9.5	2.1	58.3
Mineral fuel, lubricants and related materials	678.1	578.7	-14.7	1298.8	1476.6	13.7	-620.7	-897.9
Animals and vegetable oils, fats and waxes	8.4	13.6	61.9	8.1	7.3	-9.9	0.3	6.3
Chemical and related products n.e.c.	247.1	262.3	6.2	169.2	165.2	-2.4	77.9	97.1
Manufactured goods classified chiefly by material	591.2	543.5	-8.1	417.6	376.3	-9.9	173.6	167.2
Machinery and transport equipment	253.9	234.0	-7.8	279.0	371.7	33.2	-25.1	-137.7
Miscellaneous manufactured articles	154.8	133.8	-13.6	94.5	101.3	7.2	60.3	32.5
Commodities and transactions n.e.c.	3.1	5.7	83.9	3.6	3.3	-8.3	-0.5	2.4

<sup>1</sup> Data are preliminary as of 09.04.2012.