

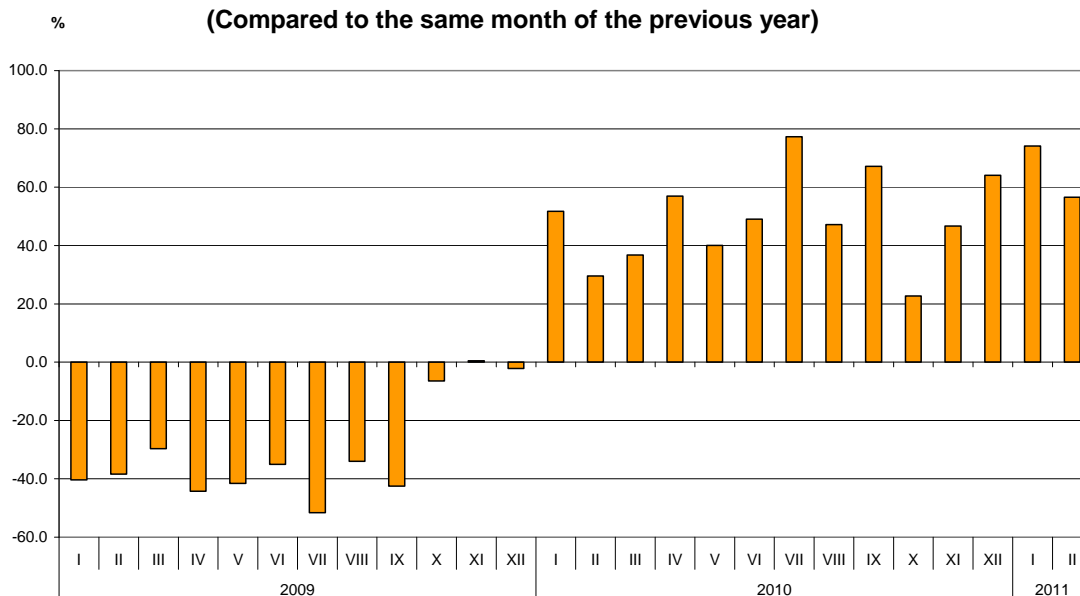


## BULGARIAN TRADE WITH THIRD COUNTRIES FOR THE PERIOD JANUARY - FEBRUARY 2011 (PRELIMINARY DATA)

In the period January - February 2011 the Bulgarian exports to third countries increased by 65.5% compared to the corresponding period of the previous year and amounted to 2.4 billion leva (Table 1.1 and 1.2). The main trade partners of Bulgaria were Turkey, Russia, Serbia, The former Yugoslav Republic of Macedonia, South Africa and China, that formed 54.5% of the total exports to non EU countries (Table 2). The exports to South Africa, India, Croatia and Turkey increased significantly. Falls were reported on the exports to Peru, Iran, Syria, United Arab Emirates, Egypt and Japan.

In February 2011 the exports to third countries increased by 56.6% compared to the corresponding month of the previous year and amounted to 1.1 billion leva.

**Figure 1. Nominal growth of exports to non EU countries for the period  
2009 - 2011  
(Compared to the same month of the previous year)**

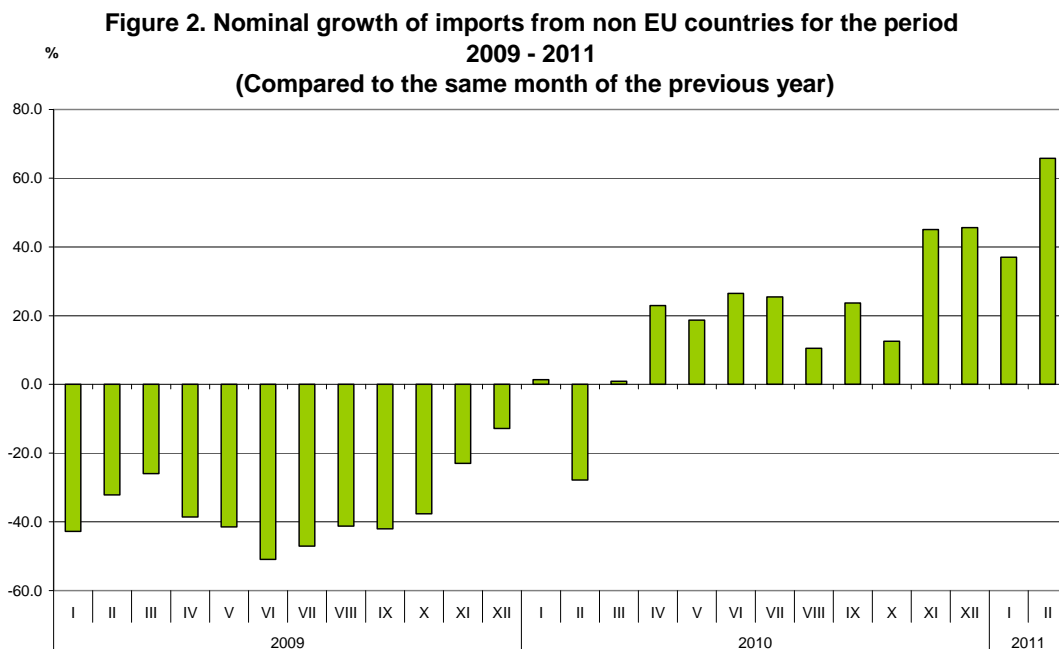




www.nsi.bg

Bulgarian imports from third countries in the first two months of 2011 increased by 49.6% compared to the corresponding period of the previous year and amounted to 2.6 billion leva (at CIF prices) (Tables 1.1 and 1.2). The most significant growths were reported on the imports from South Africa, United Arab Emirates, Kazakhstan, Albania, Singapore, Egypt and Ukraine (Table 2). The largest decreases were observed in the imports from Canada and Peru.

**In February 2011 the Bulgarian imports from third countries increased by 65.8% compared to the corresponding month of the previous year and amounted almost to 1.3 billion leva.**



**The foreign trade balance** of Bulgaria (export FOB - import CIF) with third countries in the period January - February 2011 was negative and amounted to 267.0 million leva (Table 1.1). The trade balance at FOB /FOB prices (after elimination of transport and insurance costs on imports) was also negative and amounted to 66.8 million leva.

In February 2011 the foreign trade balance of Bulgaria (export FOB - import CIF) with third countries was negative and amounted to 172.8 million leva.



[www.nsi.bg](http://www.nsi.bg)

The exports of Bulgaria to third countries, distributed according to the Standard International Trade Classification, increased in the most of the sections in the first two months of 2011 compared to the corresponding period of the previous year (Table 3). The largest growths were recorded in the sections: “Mineral fuels, lubricants and related materials”, “Crude materials, inedible (except fuels)”<sup>1</sup> “Animal and vegetable oils, fats and waxes”<sup>2</sup>. The most notable fall was observed in section “Miscellaneous manufactured articles”<sup>3</sup>.

The largest growths in **imports** from **third countries** were reported in section “Beverages and tobacco” and the most significant falls were reported in section “Crude materials, inedible (except fuel)”.

### **Bulgarian trade with third countries and EU - total**

In the period January -February 2011 **the total value of the exported goods reached almost to 6.0 billion levs**. Compared to the corresponding period of 2010 the exports **increased by 58.9%** (Table 1.1 and 1.2).

In February 2011 **the total exports amounted to 2.9 billion levs** and increased by 46.5% compared to the corresponding month of 2010.

---

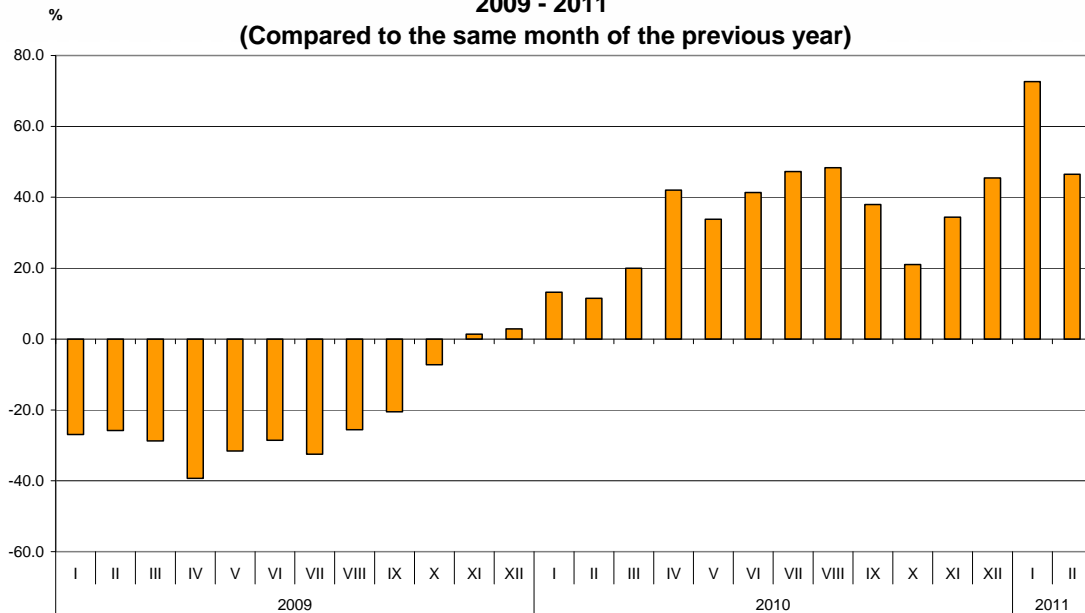
<sup>1</sup> The section includes the following divisions: raw hides, skins and furskins; oil-seeds and oleaginous fruits; crude rubber; cork and wood; pulp and waste paper; textile fibres and their wastes; crude fertilizers and crude minerals; metalliferous ores and metal scrap; crude animal and vegetable materials, n.e.s.

<sup>2</sup> The section includes the following divisions: Animal oils and fats ; Fixed vegetable fats and oils, crude, refined or fractionated; Animal or vegetable fats and oils, processed; waxes of animal or vegetable origin; inedible mixtures or preparations of animal or vegetable fats or oils, n.e.s.

<sup>3</sup> The section includes the following divisions: prefabricated buildings; sanitary, plumbing, heating and lightning fixtures and fittings, n.e.s. ; furniture and parts thereof; bedding, mattresses, mattress supports, cushions and similar stuffed furnishings; travel goods, handbags and similar containers; articles of apparel and clothing accessories; footwear; professional, scientific and controlling instruments and apparatus, n.e.s.; . photographic apparatus, equipment and supplies and optical goods, n.e.s.; watches and clocks; miscellaneous manufactured articles, n.e.s.



**Figure 3. Nominal growth of exports for the period  
2009 - 2011  
(Compared to the same month of the previous year)**

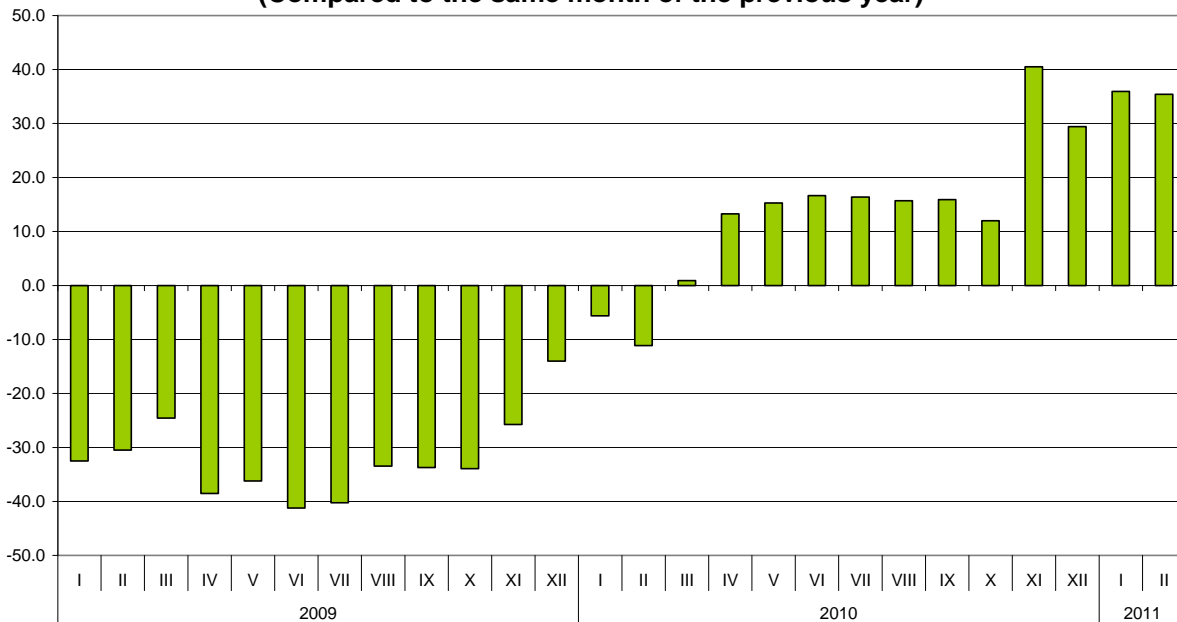


**The total imported goods in the period January - February 2011 were for 6.2 billion levs (at CIF prices), or by 36.3% more than corresponding period of the previous year (Table 1.1 and 1.2).**

**In February 2011 the total imports increased by 35.4% compared to the corresponding month of the previous year and amounted to over 3.1 billion levs.**



Figure 4. Nominal growth of imports for the period  
2009 - 2011  
(Compared to the same month of the previous year)



The **total foreign trade balance (exports FOB - import CIF)** was negative in the period January – February 2011 and amounted to 243.6 million levs which was 559.6 million levs less than the balance in the first two months of 2010 (Table 1.1 and 1.2). At **FOB/FOB** prices (after elimination of transport and insurance costs on imports) in the period January – February 2011 the total foreign trade balance **was positive** and amounted to 136.3 million levs.

In February 2011 the total foreign trade balance (**exports FOB - import CIF**) was negative and amounted to 239.0 million levs. The trade balance at FOB/FOB prices was also negative and reached to 49.8 million levs.

## ANNEX

Table 1.1

Exports, imports and trade balance for the period January - February 2010<sup>1</sup> and 2011<sup>1</sup> by months

(Million Levs)

| Months           | Exports - FOB |               |               | Imports - CIF |               |               | Imports - FOB <sup>2</sup> |               |               | Trade balance - FOB/CIF |               |               | Trade balance - FOB/FOB <sup>2</sup> |               |               |
|------------------|---------------|---------------|---------------|---------------|---------------|---------------|----------------------------|---------------|---------------|-------------------------|---------------|---------------|--------------------------------------|---------------|---------------|
|                  | Total         | EU            | Non EU        | Total         | EU            | Non EU        | Total                      | EU            | Non EU        | Total                   | EU            | Non EU        | Total                                | EU            | Non EU        |
| I.2010           | 1802.0        | 1075.2        | 726.8         | 2267.4        | 1275.0        | 992.4         | 2133.2                     | 1208.9        | 924.3         | -465.4                  | -199.8        | -265.6        | -331.2                               | -133.7        | -197.5        |
| II.2010          | 1964.3        | 1264.2        | 700.1         | 2302.1        | 1536.6        | 765.5         | 2159.5                     | 1446.8        | 712.7         | -337.8                  | -272.4        | -65.4         | -195.2                               | -182.6        | -12.6         |
| <b>I-II.2010</b> | <b>3766.3</b> | <b>2339.4</b> | <b>1426.9</b> | <b>4569.5</b> | <b>2811.6</b> | <b>1757.9</b> | <b>4292.7</b>              | <b>2655.7</b> | <b>1637.0</b> | <b>-803.2</b>           | <b>-472.2</b> | <b>-331.0</b> | <b>-526.4</b>                        | <b>-316.3</b> | <b>-210.1</b> |
| I.2011           | 3108.4        | 1842.7        | 1265.7        | 3113.0        | 1753.1        | 1359.9        | 2922.3                     | 1665.7        | 1256.6        | -4.6                    | 89.6          | -94.2         | 186.1                                | 177.0         | 9.1           |
| II.2011          | 2877.7        | 1781.4        | 1096.3        | 3116.7        | 1847.6        | 1269.1        | 2927.5                     | 1755.3        | 1172.2        | -239.0                  | -66.2         | -172.8        | -49.8                                | 26.1          | -75.9         |
| <b>I-II.2011</b> | <b>5986.1</b> | <b>3624.1</b> | <b>2362.0</b> | <b>6229.7</b> | <b>3600.7</b> | <b>2629.0</b> | <b>5849.8</b>              | <b>3421.0</b> | <b>2428.8</b> | <b>-243.6</b>           | <b>23.4</b>   | <b>-267.0</b> | <b>136.3</b>                         | <b>203.1</b>  | <b>-66.8</b>  |

<sup>1</sup> Data are preliminary as of 11.04.2011.

<sup>2</sup> By data of BNB for the transport costs.

Table 1.2

Growth of exports and imports for the period January - February 2011<sup>1</sup> compared to the same month of the previous year

(Per cent)

| Months      | Exports - FOB |             |             | Imports - CIF |             |             | Imports - FOB |             |             |
|-------------|---------------|-------------|-------------|---------------|-------------|-------------|---------------|-------------|-------------|
|             | Total         | EU          | Non EU      | Total         | EU          | Non EU      | Total         | EU          | Non EU      |
| I           | 72.5          | 71.4        | 74.1        | 37.3          | 37.5        | 37.0        | 37.0          | 37.8        | 36.0        |
| II          | 46.5          | 40.9        | 56.6        | 35.4          | 20.2        | 65.8        | 35.6          | 21.3        | 64.5        |
| <b>I-II</b> | <b>58.9</b>   | <b>54.9</b> | <b>65.5</b> | <b>36.3</b>   | <b>28.1</b> | <b>49.6</b> | <b>36.3</b>   | <b>28.8</b> | <b>48.4</b> |

<sup>1</sup> Data are preliminary as of 11.04.2011.



**Table 2**

**Exports, imports and trade balance with main non EU partner countries<sup>1</sup>  
for the period January - February 2010<sup>2</sup> and 2011<sup>2</sup>**

| Countries                            | Exports - FOB |               |             | Imports - CIF |               |             | Trade balance - FOB/CIF |               |
|--------------------------------------|---------------|---------------|-------------|---------------|---------------|-------------|-------------------------|---------------|
|                                      | 2010          | 2011          | Growth - %  | 2010          | 2011          | Growth - %  | 2010                    | 2011          |
|                                      | Million Levs  |               |             | Million Levs  |               |             | Million Levs            |               |
| <b>Third countries -total</b>        | <b>1426.9</b> | <b>2362.0</b> | <b>65.5</b> | <b>1757.9</b> | <b>2629.0</b> | <b>49.6</b> | <b>-331.0</b>           | <b>-267.0</b> |
| Albania                              | 15.2          | 16.1          | 5.9         | 1.8           | 6.9           | 283.3       | 13.4                    | 9.2           |
| Bosnia and Herzegovina               | 10.1          | 10.9          | 7.9         | 1.6           | 1.7           | 6.3         | 8.5                     | 9.2           |
| Brazil                               | 3.4           | 6.7           | 97.1        | 11.4          | 42.2          | 270.2       | -8.0                    | -35.5         |
| Canada                               | 6.1           | 8.6           | 41.0        | 37.5          | 4.1           | -89.1       | -31.4                   | 4.5           |
| China                                | 58.9          | 109.7         | 86.2        | 121.0         | 178.2         | 47.3        | -62.1                   | -68.5         |
| Croatia                              | 16.6          | 38.2          | 130.1       | 6.6           | 6.3           | -4.5        | 10.0                    | 31.9          |
| Egypt                                | 55.6          | 37.8          | -32.0       | 4.5           | 15.5          | 244.4       | 51.1                    | 22.3          |
| Georgia                              | 24.1          | 49.7          | 106.2       | 39.4          | 63.3          | 60.7        | -15.3                   | -13.6         |
| India                                | 6.6           | 37.1          | 462.1       | 10.6          | 16.8          | 58.5        | -4.0                    | 20.3          |
| Indonesia                            | 4.4           | 5.2           | 18.2        | 4.1           | 4.9           | 19.5        | 0.3                     | 0.3           |
| Iran                                 | 24.2          | 4.2           | -82.6       | 1.0           | 1.6           | 60.0        | 23.2                    | 2.6           |
| Israel                               | 9.5           | 16.9          | 77.9        | 19.8          | 26.4          | 33.3        | -10.3                   | -9.5          |
| Japan                                | 4.6           | 4.2           | -8.7        | 22.1          | 20.9          | -5.4        | -17.5                   | -16.7         |
| Kazakhstan                           | 3.2           | 5.4           | 68.8        | 0.9           | 4.1           | 355.6       | 2.3                     | 1.3           |
| Republic of Korea                    | 12.1          | 20.8          | 71.9        | 11.3          | 23.6          | 108.8       | 0.8                     | -2.8          |
| Norway                               | 7.0           | 12.0          | 71.4        | 2.2           | 2.2           | 0.0         | 4.8                     | 9.8           |
| Peru                                 | 5.8           | 0.7           | -87.9       | 63.6          | 12.1          | -81.0       | -57.8                   | -11.4         |
| Russian Federation                   | 84.9          | 142.7         | 68.1        | 670.4         | 1132.2        | 68.9        | -585.5                  | -989.5        |
| Serbia                               | 133.9         | 142.3         | 6.3         | 47.5          | 61.6          | 29.7        | 86.4                    | 80.7          |
| Singapore                            | 41.7          | 63.0          | 51.1        | 1.9           | 6.8           | 257.9       | 39.8                    | 56.2          |
| South Africa                         | 2.2           | 113.4         | 5054.5      | 0.8           | 5.7           | 612.5       | 1.4                     | 107.7         |
| Switzerland                          | 24.6          | 37.1          | 50.8        | 45.6          | 62.5          | 37.1        | -21.0                   | -25.4         |
| Syria                                | 22.2          | 3.9           | -82.4       | 14.2          | 8.6           | -39.4       | 8.0                     | -4.7          |
| Taiwan                               | 4.8           | 6.5           | 35.4        | 13.7          | 17.2          | 25.5        | -8.9                    | -10.7         |
| The former Yugoslav Rep.of Macedonia | 67.7          | 135.0         | 99.4        | 66.7          | 75.0          | 12.4        | 1.0                     | 60.0          |
| Turkey                               | 306.4         | 643.7         | 110.1       | 252.1         | 284.5         | 12.9        | 54.3                    | 359.2         |
| Ukraine                              | 22.5          | 40.5          | 80.0        | 127.3         | 356.9         | 180.4       | -104.8                  | -316.4        |
| United Arab Emirates                 | 31.1          | 6.7           | -78.5       | 4.3           | 23.8          | 453.5       | 26.8                    | -17.1         |
| USA                                  | 49.1          | 80.1          | 63.1        | 33.4          | 59.0          | 76.6        | 15.7                    | 21.1          |
| Viet Nam                             | 2.5           | 3.0           | 20.0        | 7.2           | 6.8           | -5.6        | -4.7                    | -3.8          |

<sup>1</sup> Partner country:

- In case of exports (or dispatches) is the country (or Member State) of final destination of the goods
- In case of imports (or arrivals) is the country (or Member State) of consignment of the goods.

<sup>2</sup> Data are preliminary as of 11.04.2011.



**Table 3**

**Exports, imports and trade balance with non EU countries by sections of SITC, rev.4  
for the period January - February 2010<sup>1</sup> and 2011<sup>1</sup>**

| Sections by SITC                                  | Exports - FOB |               |             | Imports - CIF |               |             | Trade balance - FOB/CIF |               |
|---|---------------|---------------|-------------|---------------|---------------|-------------|-------------------------|---------------|
|   | 2010          | 2011          | Growth - %  | 2010          | 2011          | Growth - %  | 2010                    | 2011          |
|   | Million Levs  |               |             | Million Levs  |               |             | Million Levs            |               |
| <b>Third countries -total</b>                     | <b>1426.9</b> | <b>2362.0</b> | <b>65.5</b> | <b>1757.9</b> | <b>2629.0</b> | <b>49.6</b> | <b>-331.0</b>           | <b>-267.0</b> |
| Food and live animals                             | 80.0          | 116.3         | 45.4        | 79.5          | 103.2         | 29.8        | 0.5                     | 13.1          |
| Beverages and tobacco                             | 53.5          | 75.7          | 41.5        | 12.9          | 22.9          | 77.5        | 40.6                    | 52.8          |
| Crude materials, inedible (except fuel)           | 121.2         | 233.6         | 92.7        | 273.9         | 231.5         | -15.5       | -152.7                  | 2.1           |
| Mineral fuel, lubricants and related materials    | 293.2         | 678.1         | 131.3       | 733.5         | 1298.8        | 77.1        | -440.3                  | -620.7        |
| Animals and vegetable oils, fats and waxes        | 4.6           | 8.4           | 82.6        | 5.4           | 8.1           | 50.0        | -0.8                    | 0.3           |
| Chemical and related products n.e.c.              | 189.5         | 247.1         | 30.4        | 102.7         | 169.2         | 64.8        | 86.8                    | 77.9          |
| Manufactured goods classified chiefly by material | 345.1         | 591.2         | 71.3        | 256.7         | 417.6         | 62.7        | 88.4                    | 173.6         |
| Machinery and transport equipment                 | 156.9         | 253.7         | 61.7        | 214.5         | 279.0         | 30.1        | -57.6                   | -25.3         |
| Miscellaneous manufactured articles               | 177.9         | 154.8         | -13.0       | 77.2          | 95.1          | 23.2        | 100.7                   | 59.7          |
| Commodities and transactions n.e.c.               | 5.0           | 3.1           | -38.0       | 1.6           | 3.6           | 125.0       | 3.4                     | -0.5          |

<sup>1</sup> Data are preliminary as of 11.04.2011.