

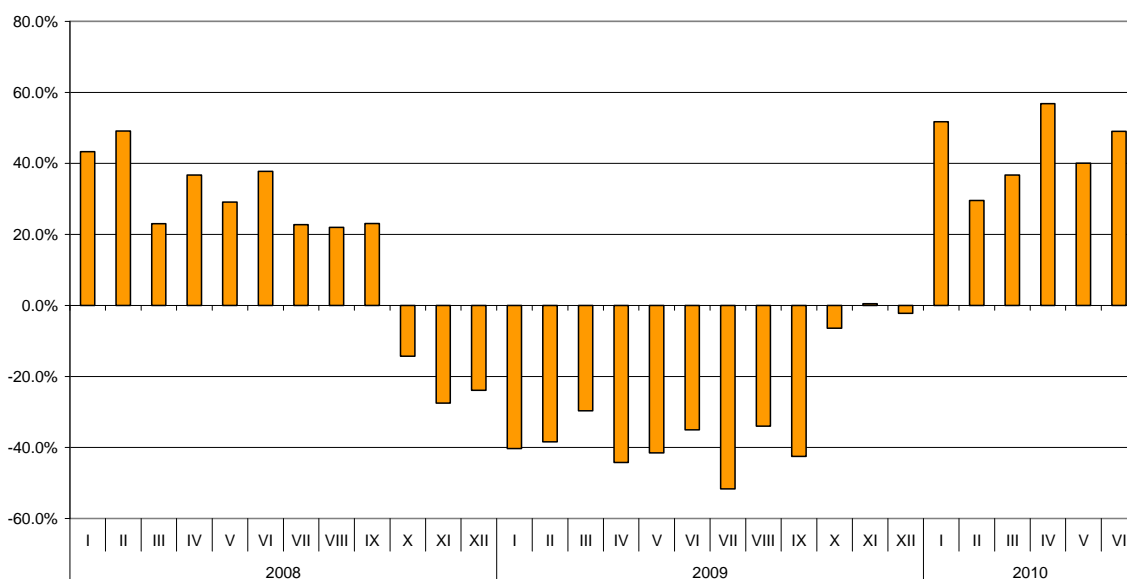


BULGARIAN TRADE WITH THIRD COUNTRIES – PRELIMINARY DATA

In the first half of 2010 the Bulgarian **exports to third countries** increased by 44.1% compared to the corresponding period of the previous year and amounted to 5.4 billion leva (Table 1.1 and 1.2). The main trade partners of Bulgaria were Turkey, Serbia, Russia, The Former Yugoslav Republic of Macedonia, Singapore and China, that formed over 50% of the total exports to non EU countries (Table 2). The Exported goods to China increased by 219.5% and those to Turkey by 65.5%. The exports to Serbia and Russia reported growth by 53.6% and 48.9% respectively, to Singapore by 26.1% and to The former Yugoslav Republic of Macedonia by around 21%. A notable increase was observed in the exports to Peru and Brazil also.

In June 2010 the exports to third countries increased by 49.1% compared to the corresponding month of the previous year and amounted to 1.1 billion leva.

**Nominal growth of exports for non EU countries for the period 2008 - 2010
(compared to the same month of the previous year)**

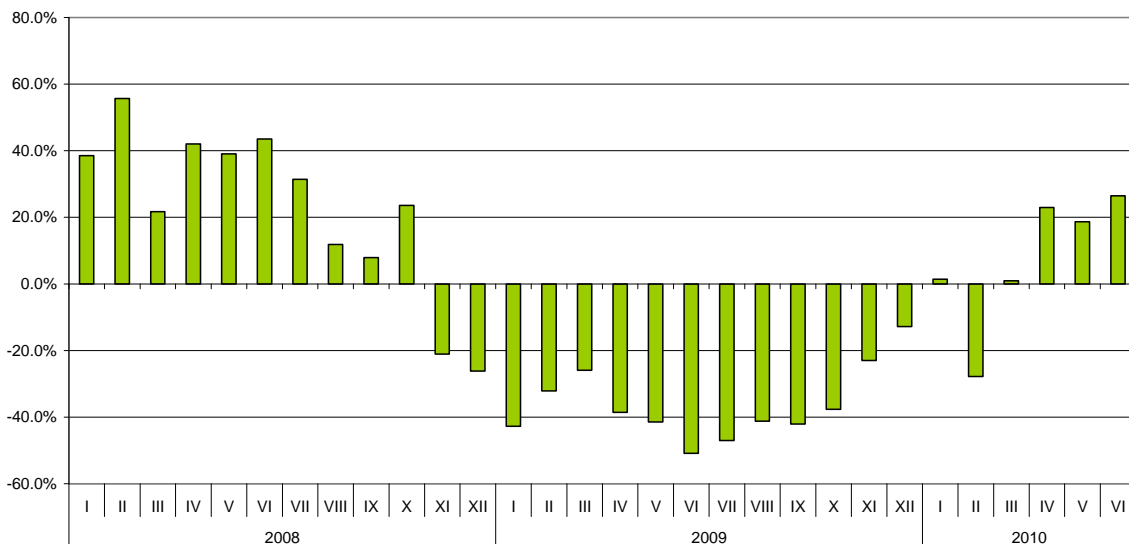




Bulgarian **imports from third countries** for the first half of 2010 increased by 7.4% compared to the corresponding period of the previous year and amounted to 7.1 billion leva (Tables 1.1 and 1.2). The most notable growth was reported on the imports from Albania, Israel and Peru. The imports from Republic of Macedonia increased by 65.2% and from Serbia by 64.2%. The largest decrease was observed in the imports from Norway and United Arab Emirates.

In June 2010 the Bulgarian **exports to third countries** increased by 26.5% compared to the corresponding month of the previous year and amounted to 1.3 billion leva.

Nominal growth of imports from non EU countries for the period 2008 - 2010
(compared to the same month of the previous year)



The trade balance of Bulgaria (export FOB - import CIF) with **third countries** for the first half of 2010 was negative and amounted to 1.7 billion leva (Table 1.1) which was over 1 billion leva less than the corresponding period of 2009.

In June 2010 the trade balance of Bulgaria was negative and amounted to 229.5 million leva.



The **exports** of Bulgaria to **third countries** distributed according to the **Standard International Trade Classification** showed that in the first six months of 2010 more goods were exported from the prevailing part of the sections compared to the corresponding period of 2009 (Table 3). The largest growth was recorded in the sections “Crude materials, inedible (except fuel)”, “Mineral fuel, lubricants and related materials” and “Manufactured goods classified chiefly by material”. A fall was observed only in exports of “Animals and vegetable oils, fats and waxes” and “Food and live animals”.

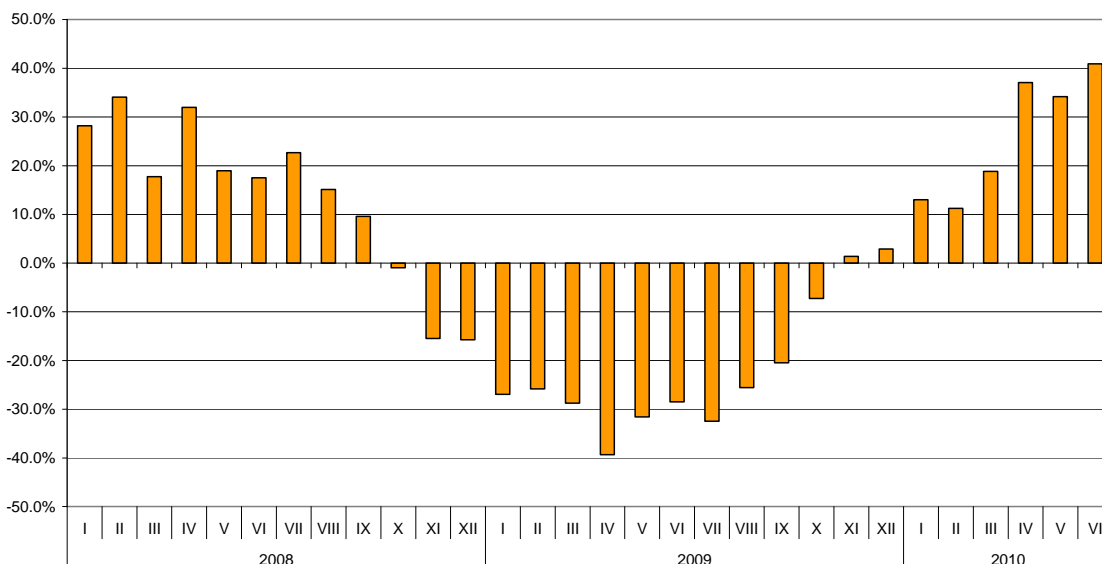
On **imports** from **third countries** the largest growth was reported in section “Crude materials, inedible (except fuel)” and the most notable fall was in “Food and live animals”.

Bulgarian trade with third countries and EU –total

In the first half of 2010 **the exported goods** were for **13.3 billion levs** and compared to the corresponding period of 2009 the exports increased by 26.2% (Table 1.1 and 1.2).

In June 2010 **the exports amounted to 2.8 billion levs** and increased by 40.9% compared to the corresponding period of 2009 the exports.

**Nominal growth of exports for the period 2008 - 2010
(compared to the same month of the previous year)**

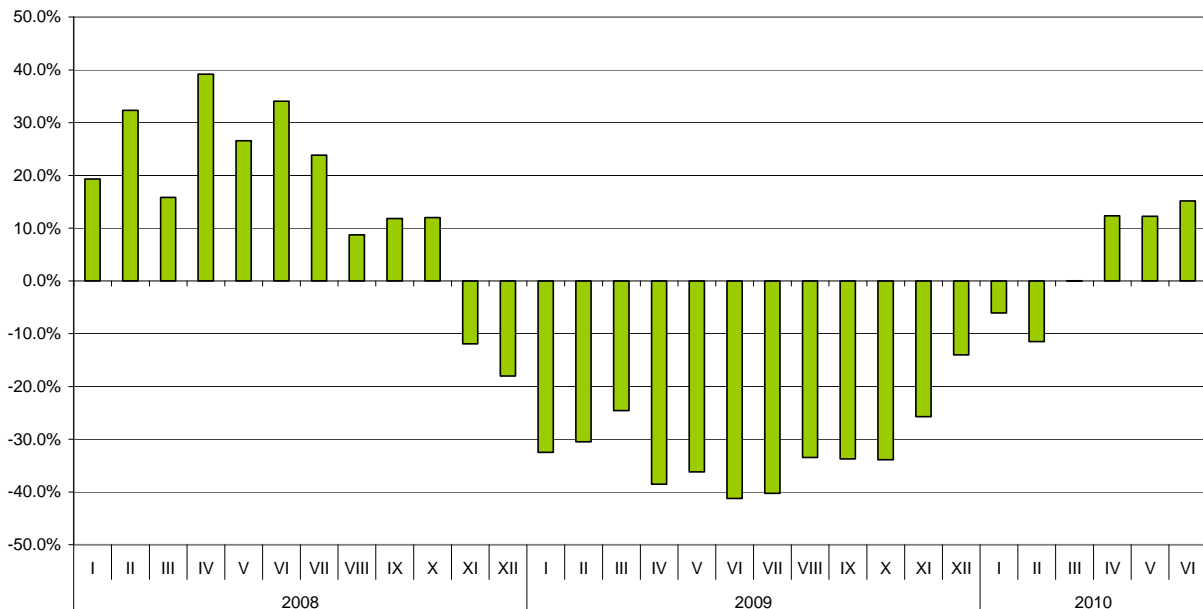




The imported goods for the first half of 2010 were for **16.9 billion levs (at CIF prices)** or by 4.1% more than in the corresponding period of the previous year (Table 1.1 and 1.2). The trend the imports to be higher than the exports continued in 2010.

In June 2010 the imports increased by 15.2% compared to the corresponding period of the previous year and amounted to 3.2 billion levs.

**Nominal growth of imports for the period 2008 - 2010
(compared to the same month of the previous year)**



Foreign trade balance (exports FOB - import CIF) was negative in the first half of 2010 and amounted to 3.6 billion levs which was over 2 billion levs less than the balance for the first six months of 2009 (Table 1.1 and 1.2). At FOB/FOB prices (after elimination of transport and insurance costs on imports) the negative balance for the first half of 2010 amounted to 2.7 billion levs.

In June 2010 the Foreign trade balance amounted to -469.8 million levs at FOB/CIF prices and to -296.6 million levs at FOB/FOB prices.

Table 1.1

EXPORTS, IMPORTS AND TRADE BALANCE FOR THE PERIOD JANUARY- JUNE 2009 AND 2010¹ BY MONTHS

(Million Levs)

MONTHS	EXPORTS-FOB			IMPORTS-CIF			IMPORTS-FOB			TRADE BALANCE FOB/CIF			TRADE BALANCE FOB/FOB		
	TOTAL	EU	Non EU	TOTAL	EU	Non EU	TOTAL	EU	Non EU	TOTAL	EU	Non EU	TOTAL	EU	Non EU
I 2009	1592.0	1113.0	479.0	2402.5	1423.7	978.8	2272.0	1353.5	918.5	-810.5	-310.7	-499.8	-680.0	-240.5	-439.5
II 2009	1761.9	1221.6	540.3	2591.2	1530.8	1060.4	2459.1	1456.4	1002.7	-829.3	-309.2	-520.1	-697.2	-234.8	-462.4
III 2009	1844.9	1172.8	672.1	2942.5	1769.0	1173.5	2796.8	1682.5	1114.3	-1097.6	-596.2	-501.4	-951.9	-509.7	-442.2
I - III 2009	5198.8	3507.4	1691.4	7936.2	4723.5	3212.7	7527.9	4492.4	3035.5	-2737.4	-1216.1	-1521.3	-2329.1	-985.0	-1344.1
IV 2009	1628.8	1000.5	628.3	2709.2	1570.4	1138.8	2576.6	1499.7	1076.9	-1080.4	-569.9	-510.5	-947.8	-499.2	-448.6
V 2009	1771.5	1126.6	644.9	2797.8	1645.2	1152.6	2652.4	1566.4	1086.0	-1026.3	-518.6	-507.7	-880.9	-439.8	-441.1
VI 2009	1955.0	1205.9	749.1	2799.7	1735.3	1064.4	2656.9	1653.0	1003.9	-844.7	-529.4	-315.3	-701.9	-447.1	-254.8
IV-VI 2009	5355.3	3333.0	2022.3	8306.7	4950.9	3355.8	7885.9	4719.1	3166.8	-2951.4	-1617.9	-1333.5	-2530.6	-1386.1	-1144.5
I-VI 2009	10554.1	6840.4	3713.7	16242.9	9674.4	6568.5	15413.8	9211.5	6202.3	-5688.8	-2834.0	-2854.8	-4859.7	-2371.1	-2488.6
I 2010	1799.3	1072.5	726.8	2256.4	1264.0	992.4	2144.6	1205.8	938.8	-457.1	-191.5	-265.6	-345.3	-133.3	-212.0
II 2010	1959.5	1259.4	700.1	2293.5	1528.0	765.5	2177.6	1451.8	725.8	-334.0	-268.6	-65.4	-218.1	-192.4	-25.7
III 2010	2192.0	1273.0	919.0	2943.4	1758.8	1184.6	2801.3	1682.4	1118.9	-751.4	-485.8	-265.6	-609.3	-409.4	-199.9
I - III 2010	5950.8	3604.9	2345.9	7493.3	4550.8	2942.5	7123.5	4340.0	2783.5	-1542.5	-945.9	-596.6	-1172.7	-735.1	-437.6
IV 2010	2232.6	1247.0	985.6	3044.2	1644.2	1400.0	2893.6	1571.8	1321.8	-811.6	-397.2	-414.4	-661.0	-324.8	-336.2
V 2010	2376.9	1473.6	903.3	3139.9	1772.0	1367.9	2981.9	1692.4	1289.5	-763.0	-298.4	-464.6	-605.0	-218.8	-386.2
VI 2010	2754.7	1638.1	1116.6	3224.5	1878.4	1346.1	3051.3	1784.5	1266.8	-469.8	-240.3	-229.5	-296.6	-146.4	-150.2
IV-VI 2010	7364.2	4358.7	3005.5	9408.6	5294.6	4114.0	8926.8	5048.7	3878.1	-2044.4	-935.9	-1108.5	-1562.6	-690.0	-872.6
I - VI 2010	13315.0	7963.6	5351.4	16901.9	9845.4	7056.5	16050.3	9388.7	6661.6	-3586.9	-1881.8	-1705.1	-2735.3	-1425.1	-1310.2

¹ Data are preliminary - 06.08.2010

Table 1.2

GROWTH OF EXPORTS AND IMPORTS FOR THE THE PERIOD JANUARY - JUNE 2009 AND 2010¹ COMPARED TO THE SAME MONTH OF THE PREVIOUS YEAR

(Per cent)

Months	Exports - FOB			Imports - CIF			Imports - FOB		
	TOTAL	EU	Non EU	TOTAL	EU	Non EU	TOTAL	EU	Non EU
I	13.0	-3.6	51.7	-6.1	-11.2	1.4	-5.6	-10.9	2.2
II	11.2	3.1	29.6	-11.5	-0.2	-27.8	-11.4	-0.3	-27.6
III	18.8	8.5	36.7	0.0	-0.6	0.9	0.2	0.0	0.4
I - III	14.5	2.8	38.7	-5.6	-3.7	-8.4	-5.4	-3.4	-8.3
IV	37.1	24.6	56.9	12.4	4.7	22.9	12.3	4.8	22.7
V	34.2	30.8	40.1	12.2	7.7	18.7	12.4	8.0	18.7
VI	40.9	35.8	49.1	15.2	8.2	26.5	14.8	8.0	26.2
IV - VI	37.5	30.8	48.6	13.3	6.9	22.6	13.2	7.0	22.5
I - VI	26.2	16.4	44.1	4.1	1.8	7.4	4.1	1.9	7.4

Table2

EXPORTS, IMPORTS AND TRADE BALANCE WITH MAIN NON EU PARTNER COUNTRIES¹
FOR FOR THE PERIOD JANUARY - JUNE 2009 AND 2010²

(Million Levs)

	Exports - FOB			Imports - CIF			Trade balance - FOB/CIF	
	2009	2010	Growth - %	2009	2010	Growth - %	2009	2010
Total	3713.7	5351.4	44.1	6568.5	7056.5	7.4	-2854.8	-1705.1
Albania	53.4	57.7	8.1	2.0	10.3	415.0	51.4	47.4
Bosnia and Herzegovina	24.3	30.0	23.5	4.8	6.3	31.3	19.5	23.7
Brazil	5.9	26.3	345.8	96.0	67.4	-29.8	-90.1	-41.1
Canada	25.8	24.3	-5.8	37.3	46.8	25.5	-11.5	-22.5
China	59.1	188.8	219.5	487.7	434.3	-10.9	-428.6	-245.5
Croatia	67.3	111.1	65.1	34.5	21.8	-36.8	32.8	89.3
Egypt	102.8	114.4	11.3	18.6	13.4	-28.0	84.2	101.0
Georgia	74.6	111.9	50.0	245.9	161.2	-34.4	-171.3	-49.3
India	17.3	47.5	174.6	44.7	41.6	-6.9	-27.4	5.9
Indonesia	17.0	12.6	-25.9	17.0	13.5	-20.6	0.0	-0.9
Iran	29.9	54.1	80.9	6.5	6.3	-3.1	23.4	47.8
Israel	19.0	26.8	41.1	30.3	108.3	257.4	-11.3	-81.5
Japan	15.4	15.4	0.0	80.9	64.4	-20.4	-65.5	-49.0
Kazakhstan	16.8	15.8	-6.0	4.8	3.2	-33.3	12.0	12.6
Korea, Rep. of	18.9	54.7	189.4	52.3	44.1	-15.7	-33.4	10.6
Norway	21.5	23.0	7.0	27.8	6.1	-78.1	-6.3	16.9
Peru	0.5	6.8	1260.0	115.7	237.1	104.9	-115.2	-230.3
Russian Fed.	253.2	376.9	48.9	2052.8	2724.8	32.7	-1799.6	-2347.9
Serbia	304.4	467.5	53.6	112.7	185.1	64.2	191.7	282.4
Singapore	181.3	228.6	26.1	10.1	5.7	-43.6	171.2	222.9
South Africa	4.5	6.4	42.2	61.8	7.3	-88.2	-57.3	-0.9
Switzerland	81.1	83.1	2.5	138.7	152.1	9.7	-57.6	-69.0
Syria	36.4	104.6	187.4	23.8	32.5	36.6	12.6	72.1
Taiwan	10.4	17.0	63.5	43.3	50.1	15.7	-32.9	-33.1
The former Yugoslav Rep. of Macedonia	218.0	262.8	20.6	138.7	229.1	65.2	79.3	33.7
Turkey	699.9	1158.4	65.5	905.4	911.8	0.7	-205.5	246.6
Ukraine	76.3	103.4	35.5	958.5	697.0	-27.3	-882.2	-593.6
United Arab Emirates	71.2	42.8	-39.9	13.0	16.5	26.9	58.2	26.3
USA	181.3	146.5	-19.2	168.4	129.8	-22.9	12.9	16.7
Viet Nam	9.7	9.8	1.0	57.0	40.4	-29.1	-47.3	-30.6

¹Partner country:

- In case of exports (or dispatches) is the country (or Member State) of final destination of the goods
- In case of imports (or arrivals) is the country (or Member State) of consignment of the goods.

²Data are preliminary - 06.08.2010

Table 3

**EXPORTS, IMPORTS AND TRADE BALANCE WITH NON EU COUNTRIES BY SECTIONS OF SITC, rev.4
FOR THE PERIOD JANUARY- JUNE 2009 AND 2010¹**

(Million Levs)

Sections by SITC	Exports - FOB			Imports - CIF			Trade balance - FOB/CIF	
	2009	2010	Growth - %	2009	2010	Growth - %	2009	2010
Total	3713.7	5351.4	44.1	6568.5	7056.5	7.4	-2854.8	-1705.1
Food and live animals	296.5	267.0	-9.9	382.5	281.8	-26.3	-86.0	-14.8
Beverages and tobacco	128.8	173.5	34.7	54.7	68.1	24.5	74.1	105.4
Crude materials, inedible (except fuel)	282.3	556.1	97.0	770.4	1005.7	30.5	-488.1	-449.6
Mineral fuel, lubricants and related materials	860.4	1331.0	54.7	2769.7	3122.8	12.7	-1909.3	-1791.8
Animals and vegetable oils, fats and waxes	21.7	18.3	-15.7	24.1	19.5	-19.1	-2.4	-1.2
Chemical and related products n.e.c.	502.0	676.5	34.8	343.3	370.4	7.9	158.7	306.1
Manufactured goods classified chiefly by material	794.9	1212.9	52.6	978.2	1009.4	3.2	-183.3	203.5
Machinery and transport equipment	507.5	637.8	25.7	913.2	876.9	-4.0	-405.7	-239.1
Miscellaneous manufactured articles	309.7	466.9	50.8	327.0	294.8	-9.8	-17.3	172.1
Commodities and transactions n.e.c.	9.9	11.4	15.2	5.4	7.1	31.5	4.5	4.3

¹ Data are preliminary - 06.08.2010