



## PRODUCTION AND DELIVERIES OF ENERGY PRODUCTS, NOVEMBER 2015<sup>1,2</sup>

### Production of energy products

In November 2015 compared to October 2015 an increase is reported for the production of:

- solid fuels - by 1.1% to 3 262 thousand tonnes;
- transport diesel - by 13.3% to 221 thousand tonnes;
- natural gas - by 20.0% to 6 million m<sup>3</sup>;
- electricity - by 8.1% to 3 879 GWh.

A decrease is reported for the production of:

- unleaded motor gasoline - by 3.8% to 151 thousand tonnes.

No change for the production of liquefied petroleum gases is reported (Annex, Table 1).

In November 2015 compared to November 2014 an increase is reported for the production of:

- solid fuels - by 4.0%;
- unleaded motor gasoline - by 3.4%;
- transport diesel - by 20.1%;
- natural gas - by 20.0%.

A decrease is reported for the production of:

- liquefied petroleum gases - by 20.0%;
- electricity - by 11.8%.

### Deliveries of energy products

In November 2015 compared to October 2015 an increase is reported for the deliveries of:

- solid fuels - by 1.2% to 3 331 thousand tonnes;
- transport diesel - by 28.2% to 200 thousand tonnes;
- natural gas - by 27.7% to 300 million m<sup>3</sup>;
- electricity - by 4.2% to 2 821 GWh.

A decrease is reported for the deliveries of:

- liquefied petroleum gases - by 16.7% to 30 thousand tonnes;
- unleaded motor gasoline - by 16.0% to 42 thousand tonnes (Annex, Table 2).

<sup>1</sup> The survey on energy products is conducted every month in accordance with the Regulation (EO) № 1099/2008 of the European Parliament and of the Council of 22 November 2008 on energy statistics, amended by the Commission Regulation (EU) No 147/2013 of 13 February 2013 of the European Parliament and of the Council as regards the implementation of updates for the monthly and annual energy statistics. The survey aims to submit information on the production and inland deliveries of the main energy products - electricity, solid fuels, natural gas and petroleum products. The reporting units are producers, importers and exporters of energy products. Production and deliveries of the energy products are the main observed indicators.

<sup>2</sup> Data series can be found on the NSI website: [www.nsi.bg](http://www.nsi.bg), section Energy/Data.



In November 2015 compared to November 2014 an increase is reported for the deliveries of:

- solid fuels - by 1.6%;
- unleaded motor gasoline - by 82.6%;
- transport diesel - by 65.3%;
- natural gas - by 3.8%.

A decrease is reported for the deliveries of:

- liquefied petroleum gases - by 9.1%;
- electricity - by 6.1%.



## Methodological notes

### Solid fuels

*Production* - includes Hard coal, Lignite and Solid fuels from coal. Producers report quantities calculated after any operation for removal of inert matter.

*Deliveries* - quantities delivered to the internal market. They are equal to the total of the deliveries to the different types of consumers: producers' own use, main activity power stations, coking plants and patent fuel plants, industry, iron and steel industry and others.

### Petroleum products

*Production* - includes production of finished products at a refinery or blending plant.

*Deliveries* - wholesale deliveries to the domestic market of finished petroleum products from producers, importers/exporters.

Deliveries of petroleum products are defined as: primary product receipts + gross refinery output + recycled products – refinery fuel + imports – exports – international marine bunkers + interproduct transfers – products transferred – stock changes.

### Natural gas

*Production* - includes all dry marketable production within national boundaries including offshore production. Production is measured after purification and extraction of NGLs and sulphur.

*Deliveries* - total natural gas, distributed for the internal market, including own use and losses. This is defined as: *Indigenous production + Imports – Exports – Stock change*.

Data are presented in million cubic metres assuming reference gas conditions 15° C and 101.325 kPa.

### Electricity

*Production* - includes produced electricity from Thermal power plants, Nuclear power plant, Hydro power plants, Pumped storage plant and electricity, obtained from wind generators and solar panels.

*Deliveries* - sum of net produced electricity and net import.



**Annex**

**Table 1**

**Production of energy products**

	Measure	2014		2015										
		XI	XII	I	II	III	IV	V	VI	VII	VIII	IX	X	XI
Solid fuels	thousand tonnes	3137	3413	3703	3146	2453	2879	2329	2170	3001	3351	3609	3225	3262
Total petroleum products	thousand tonnes	553	561	549	288	576	585	616	603	628	599	584	569	595
of which:														
Liquefied petroleum gases	thousand tonnes	10	10	9	7	9	8	9	9	10	9	7	8	8
Unleaded motor gasoline	thousand tonnes	146	153	158	73	166	160	155	154	158	159	145	157	151
Transport diesel	thousand tonnes	184	180	173	97	181	188	192	180	196	198	188	195	221
Natural gas	million m <sup>3</sup>	5	12	10	8	9	8	7	6	6	5	6	5	6
Electricity	GWh	4397	4893	4961	4268	4417	3857	3299	3768	4233	4106	3564	3588	3879

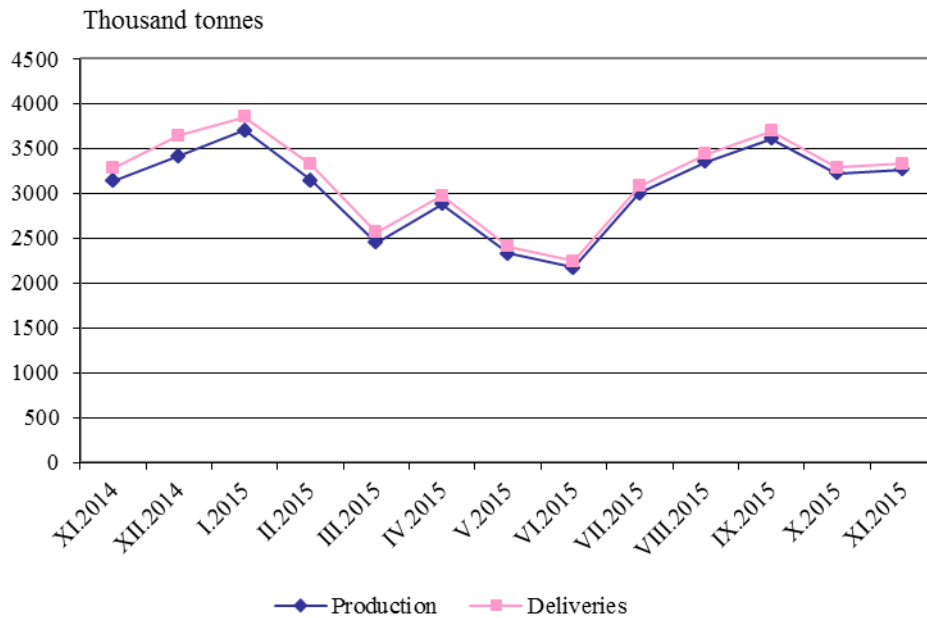
**Table 2**

**Deliveries of energy products**

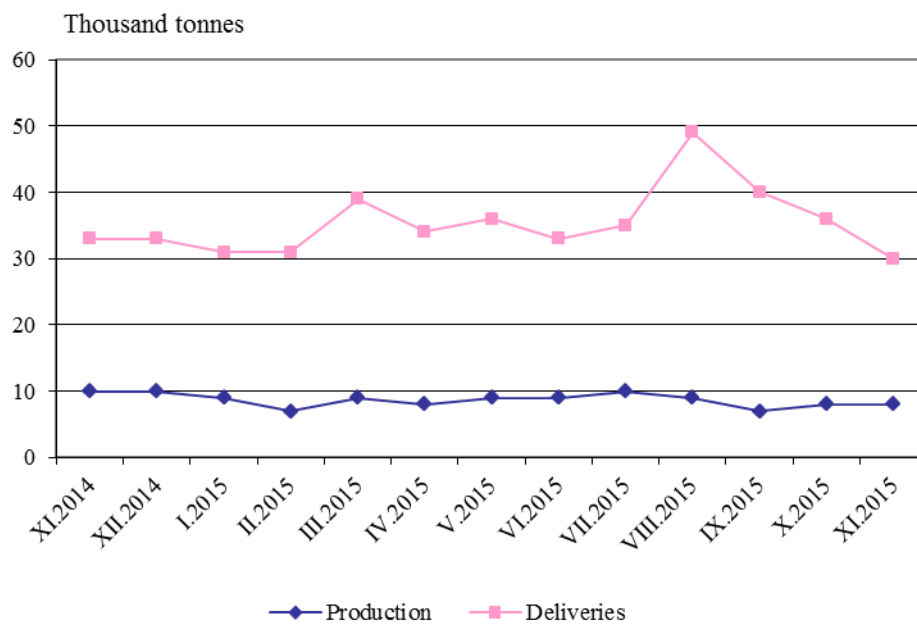
	Measure	2014		2015										
		XI	XII	I	II	III	IV	V	VI	VII	VIII	IX	X	XI
Solid fuels	thousand tonnes	3280	3643	3851	3325	2568	2972	2405	2246	3079	3440	3697	3290	3331
Total petroleum products	thousand tonnes	247	292	177	264	299	281	298	326	365	367	305	330	341
of which:														
Liquefied petroleum gases	thousand tonnes	33	33	31	31	39	34	36	33	35	49	40	36	30
Unleaded motor gasoline	thousand tonnes	23	37	20	41	50	29	47	47	43	39	36	50	42
Transport diesel	thousand tonnes	121	157	80	151	158	157	146	156	191	186	161	156	200
Natural gas	million m <sup>3</sup>	289	344	358	318	298	245	210	198	192	195	172	235	300
Electricity	GWh	3003	3346	3555	3115	3194	2620	2352	2328	2616	2545	2442	2708	2821



**Figure 1. Production and deliveries of solid fuels**

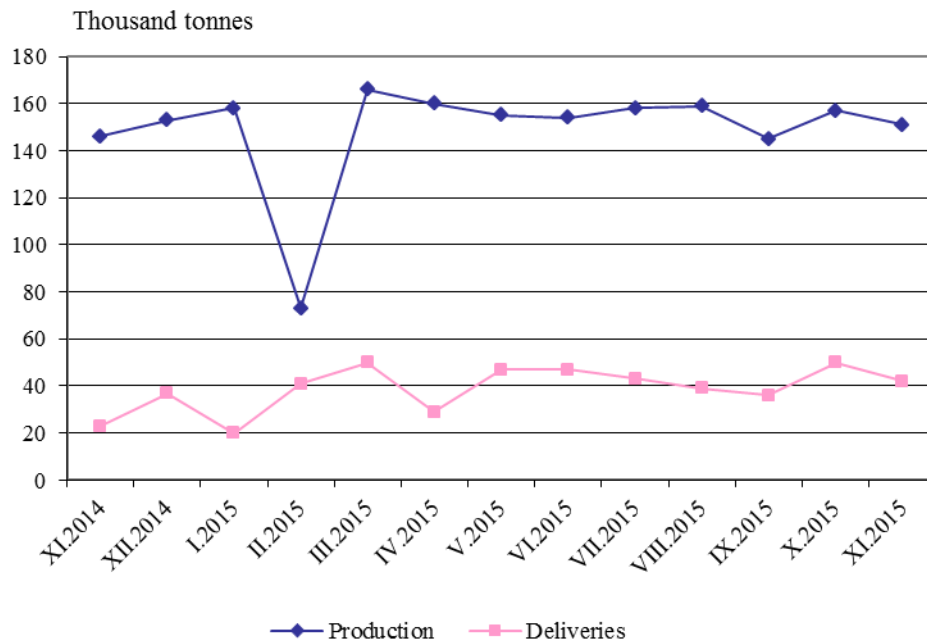


**Figure 2. Production and deliveries of liquefied petroleum gases**

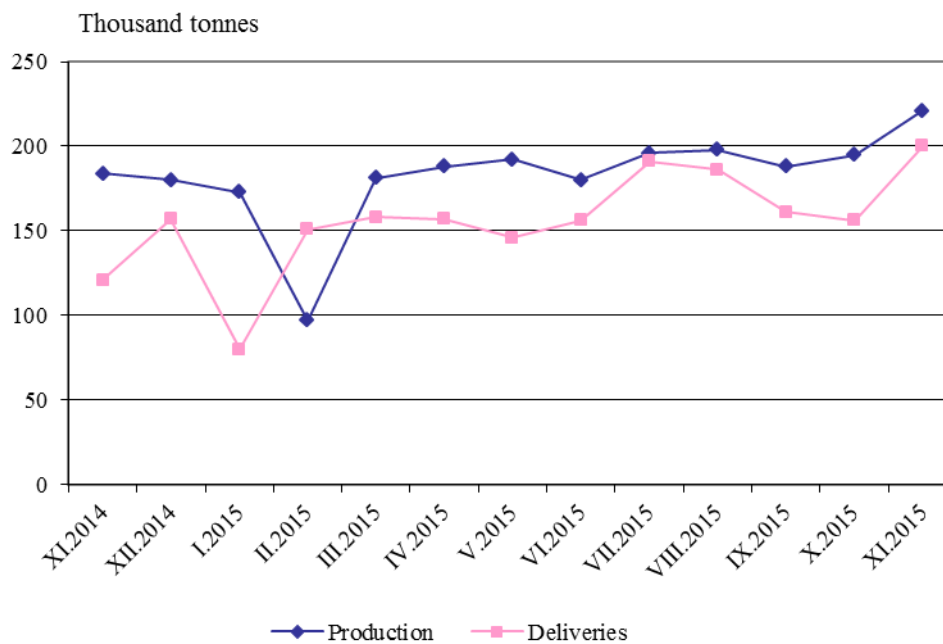




**Figure 3. Production and deliveries of unleaded motor gasoline**

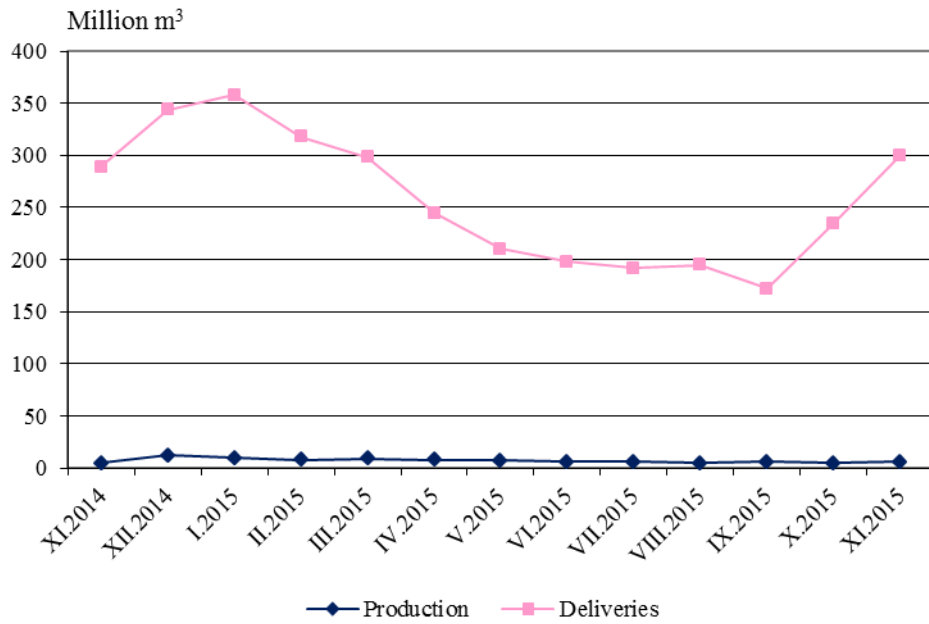


**Figure 4. Production and deliveries of transport diesel**





**Figure 5. Production and deliveries of natural gas**



**Figure 6. Production and deliveries of electricity**

