



PRODUCTION AND DELIVERIES OF ENERGY PRODUCTS, NOVEMBER 2014^{1,2}

Production of energy products

In November 2014 compared to October 2014 an increase is reported for the production of:

- electricity - by 9.8% to 4 397 GWh.

A decrease is reported for the production of:

- solid fuels - by 2.7% to 3 137 thousand tonnes;
- unleaded motor gasoline - by 12.6% to 146 thousand tonnes;
- transport diesel - by 12.8% to 184 thousand tonnes;
- natural gas - by 50.0% to 5 million m³.

No change for the production of liquefied petroleum gases is reported (Annex, Table 1).

In November 2014 compared to November 2013 an increase is reported for the production of:

- liquefied petroleum gases - by 42.9%;
- unleaded motor gasoline - by 7.4%;
- transport diesel - by 14.3%;
- electricity - by 6.3%.

A decrease is reported for the production of:

- solid fuels - by 5.7%;
- natural gas - by 80.0%.

Deliveries of energy products

In November 2014 compared to October 2014 an increase is reported for the deliveries of:

- natural gas - by 37.0% to 289 million m³;
- electricity - by 11.3% to 3 003 GWh.

A decrease is reported for the deliveries of:

- solid fuels - by 3.0% to 3 280 thousand tonnes;
- liquefied petroleum gases - by 8.3% to 33 thousand tonnes;
- unleaded motor gasoline - by 43.9% to 23 thousand tonnes;
- transport diesel - by 21.9% to 121 thousand tonnes (Annex, Table 2).

¹ The survey on energy products is conducted every month in accordance with the Regulation (EO) № 1099/2008 of the European Parliament and of the Council of 22 November 2008 on energy statistics, amended by the Commission Regulation (EU) No 147/2013 of 13 February 2013 as regards the implementation of updates for the monthly and annual energy statistics. The survey aims to submit information on the production and inland deliveries of the main energy products - electricity, solid fuels, natural gas and petroleum products. The reporting units are producers, importers and exporters of energy products. Production and deliveries of the energy products are the main observed indicators.

² Data series can be found on the NSI website: www.nsi.bg, section Energy/Data.



In November 2014 compared to November 2013 an increase is reported for the deliveries of:

- natural gas - by 11.6%;
- electricity - by 4.7%.

A decrease is reported for the deliveries of:

- solid fuels - by 5.9%;
- liquefied petroleum gases - by 2.9%;
- unleaded motor gasoline - by 17.9%;
- transport diesel - by 28.4%.



Methodological notes

Solid fuels

Production - includes Hard coal, Lignite and Solid fuels from coal. Producers report quantities calculated after any operation for removal of inert matter.

Deliveries - quantities delivered to the internal market. They are equal to the total of the deliveries to the different types of consumers: producers' own use, main activity power stations, coking plants and patent fuel plants, industry, iron and steel industry and others.

Petroleum products

Production - includes production of finished products at a refinery or blending plant.

Deliveries - wholesale deliveries to the domestic market of finished petroleum products from producers, importers/exporters.

Deliveries of petroleum products are defined as: primary product receipts + gross refinery output + recycled products - refinery fuel + imports - exports - international marine bunkers + interproduct transfers - products transferred - stock changes.

Natural gas

Production - includes all dry marketable production within national boundaries including offshore production. Production is measured after purification and extraction of NGLs and sulphur.

Deliveries - total natural gas, distributed for the internal market, including own use and losses. This is defined as: *Indigenous production + Imports - Exports - Stock change*.

Data are presented in million cubic metres assuming reference gas conditions 15° C and 101.325 kPa.

Electricity

Production - includes produced electricity from Thermal power plants, Nuclear power plant, Hydro power plants, Pumped storage plant and electricity, obtained from wind generators and solar panels.

Deliveries - sum of net produced electricity and net import.

Annex

Table 1

Production of energy products

	Measure	2013		2014										
		XI	XII	I	II	III	IV	V	VI	VII	VIII	IX	X	XI
Solid fuels	thousand tonnes	3326	3841	3664	2850	2176	2473	2700	1641	2175	2462	2703	3225	3137
Total petroleum products	thousand tonnes	506	458	482	427	33	573	604	549	590	601	588	612	553
of which:														
Liquefied petroleum gases	thousand tonnes	7	7	7	7	0	9	9	8	10	10	8	10	10
Unleaded motor gasoline	thousand tonnes	136	130	137	120	3	136	147	137	147	153	153	167	146
Transport diesel	thousand tonnes	161	132	133	123	14	211	213	159	174	187	191	211	184
Natural gas	million m ³	25	24	22	18	20	20	20	16	13	12	11	10	5
Electricity	GWh	4138	4686	4690	3950	3699	3583	3422	3486	3902	3688	3479	4004	4397

Table 2

Deliveries of energy products

	Measure	2013		2014										
		XI	XII	I	II	III	IV	V	VI	VII	VIII	IX	X	XI
Solid fuels	thousand tonnes	3485	4062	3889	3065	2352	2608	2816	1801	2331	2628	2876	3380	3280
Total petroleum products	thousand tonnes	292	250	223	249	234	273	306	301	351	359	346	315	247
of which:														
Liquefied petroleum gases	thousand tonnes	34	34	33	22	30	39	35	33	38	40	38	36	33
Unleaded motor gasoline	thousand tonnes	28	27	29	32	29	51	44	42	52	58	33	41	23
Transport diesel	thousand tonnes	169	143	108	141	120	111	158	140	169	170	189	155	121
Natural gas	million m ³	259	355	354	295	279	236	206	157	148	155	166	211	289
Electricity	GWh	2869	3502	3461	3007	2921	2641	2487	2415	2551	2539	2417	2697	3003



Figure 1. Production and deliveries of solid fuels

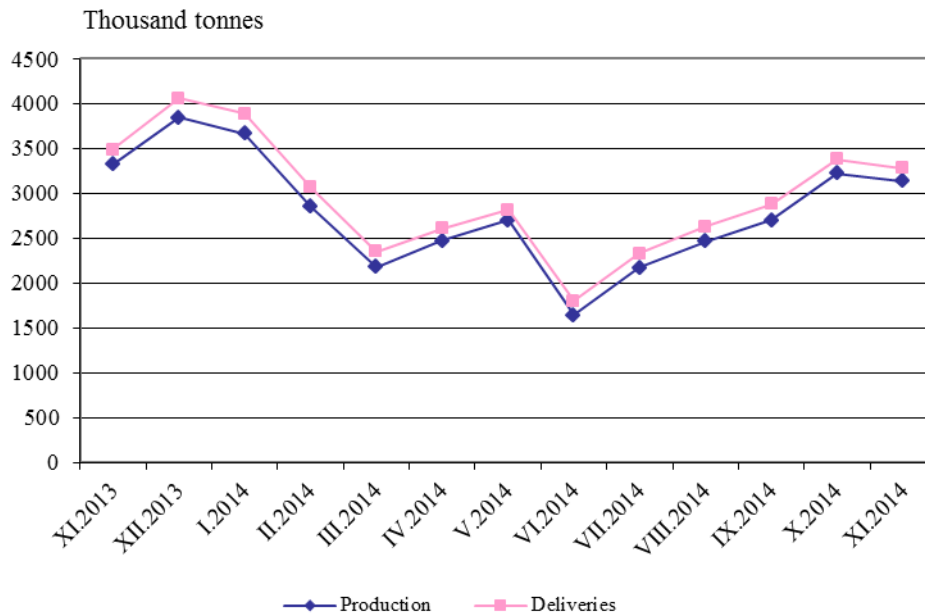


Figure 2. Production and deliveries of liquefied petroleum gases

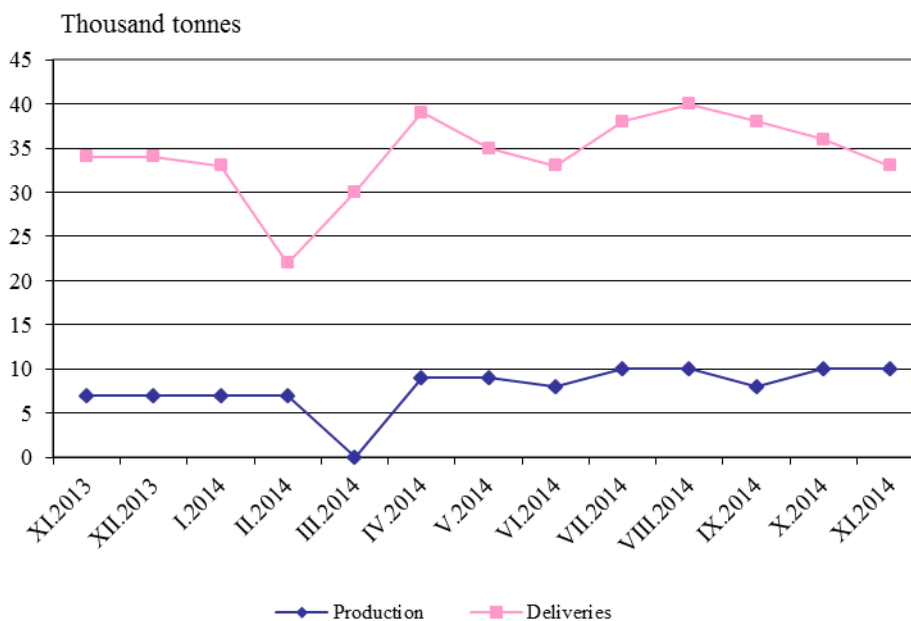




Figure 3. Production and deliveries of unleaded motor gasoline

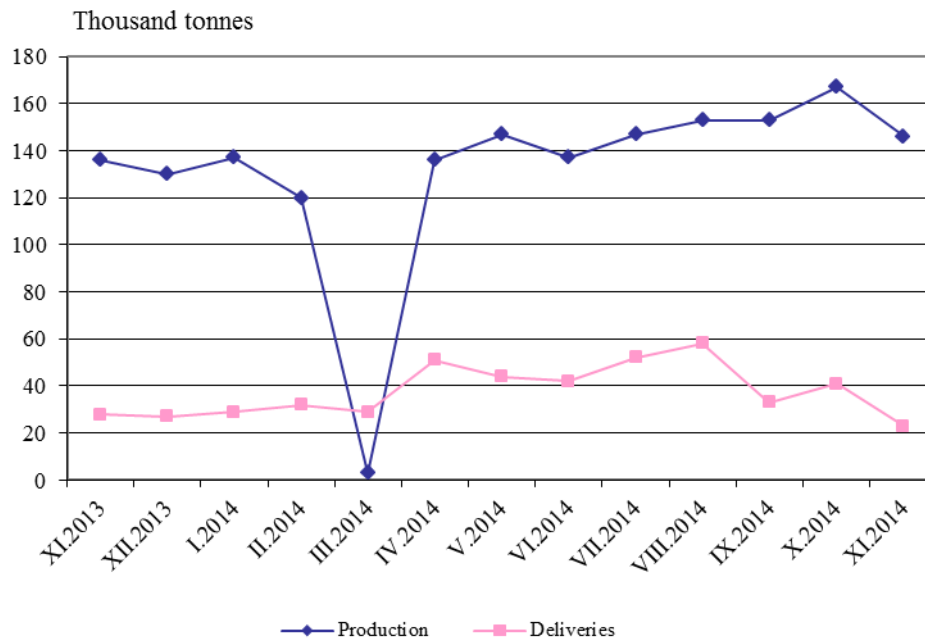


Figure 4. Production and deliveries of transport diesel

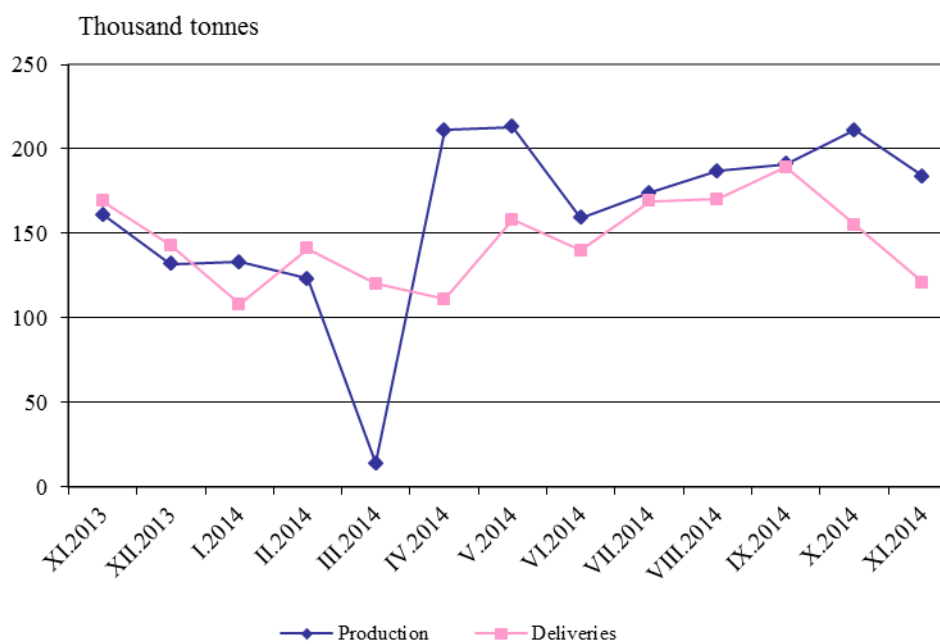




Figure 5. Production and deliveries of natural gas

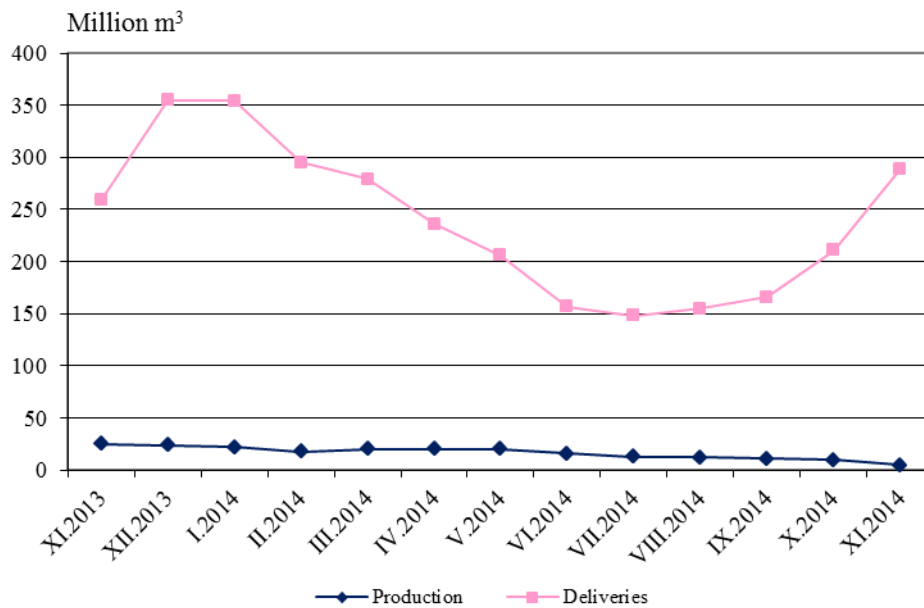


Figure 6. Production and deliveries of electricity

