



EMPLOYEES UNDER LABOUR CONTRACT AND GROSS AVERAGE WAGES AND SALARIES, FOURTH QUARTER OF 2016

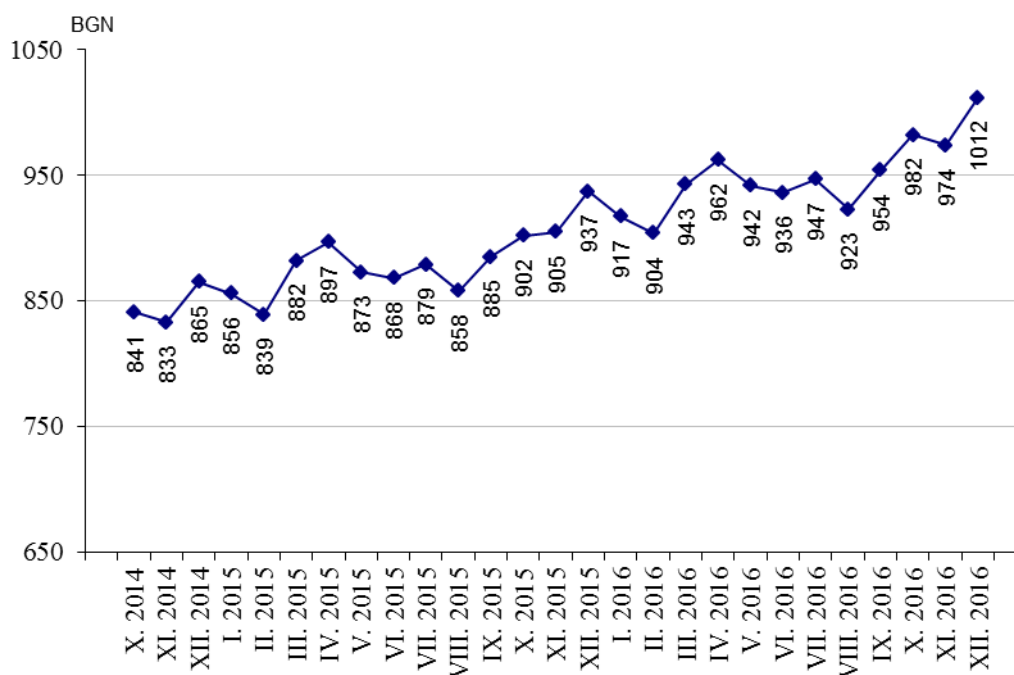
According to the preliminary data of the National Statistical Institute (NSI) at the end of December 2016 the **number of employees** under labour contract decreased by 39.5 thousand or 1.7% as compared to the end of September 2016 and reached 2.27 million. The highest decrease was observed in economic activities: ‘Agriculture, forestry and fishing’ - 17.0% and ‘Accommodation and food service activities’ - 16.0%. Increase of the number of employees was recorded in ‘Information and communication’ - by 1.6%, and ‘Education’ - by 1.0%.

In the structure of employees by economic activities the biggest relative share of employees was in ‘Manufacturing’ - 22.3% and ‘Wholesale and retail trade; repair of motor vehicles and motorcycles’ - 17.4%.

At the end of December 2016 as compared to December 2015 the number of employees under labour contract increased by 50.4 thousand or 2.3%. The highest increase in absolute figures was observed in economic activities ‘Manufacturing’ - 12.7 thousand, ‘Wholesale and retail trade; repair of motor vehicles and motorcycles’ - 7.5 thousand and ‘Administrative and support service activities’ - 7.4 thousand. In percentages the highest increase was in ‘Other services activities’ - 10.8% and ‘Information and communication’ - by 8.4%. The highest decrease in absolute figures by 3.5 thousand at the end of December 2016 as compared to December 2015 was registered in economic activity ‘Construction’ and in percentages - by 8.7% in ‘Mining and quarrying’.

The **average monthly wages and salaries** of the employees under labour contract in October was 982 BGN, in November - 974 BGN and in December 2016 - 1 012 BGN.

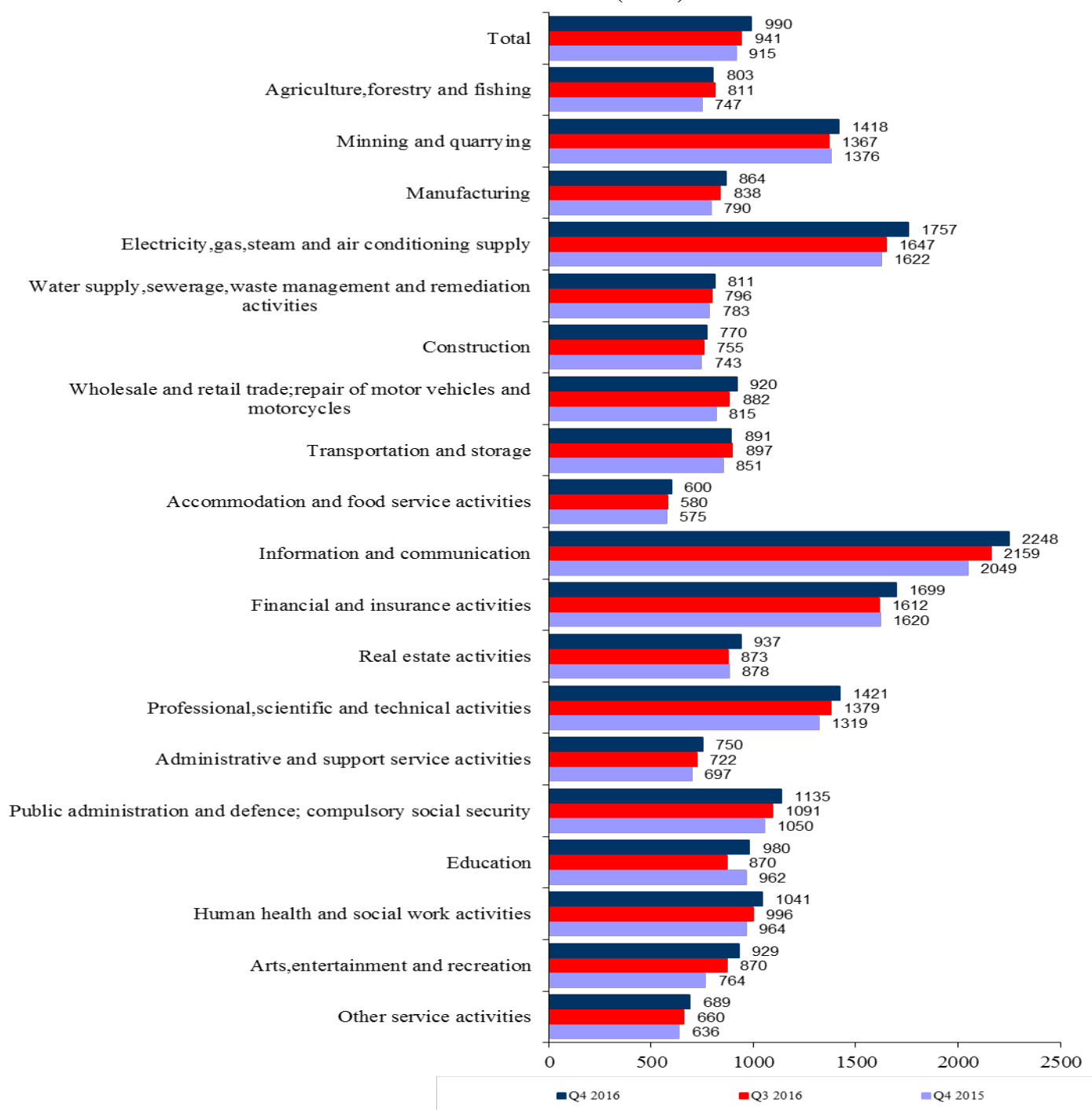
Figure 1. Gross average wages and salaries by months





In the fourth quarter of 2016 in comparison with the third quarter of 2016 the average monthly wages and salaries increased by 5.2% getting 990 BGN. The highest increase in wages and salaries was reported in 'Education' - 12.6%, and 'Real estate activities' - 7.3%.

Figure 2. Gross average monthly wages and salaries of the employees under labour contract by economic activities (BGN)





Compared to the fourth quarter of 2015 the average monthly wages and salaries in the fourth quarter of 2016 rose by 8.2%. The highest growth rates were recorded in economic activities: ‘Arts, entertainment and recreation’ - 21.6%, ‘Wholesale and retail trade; repair of motor vehicles and motorcycles’ - 12.9%, and ‘Information and communication’ - 9.7%.

The economic activities with the highest wages and salaries in the fourth quarter of 2016 were:

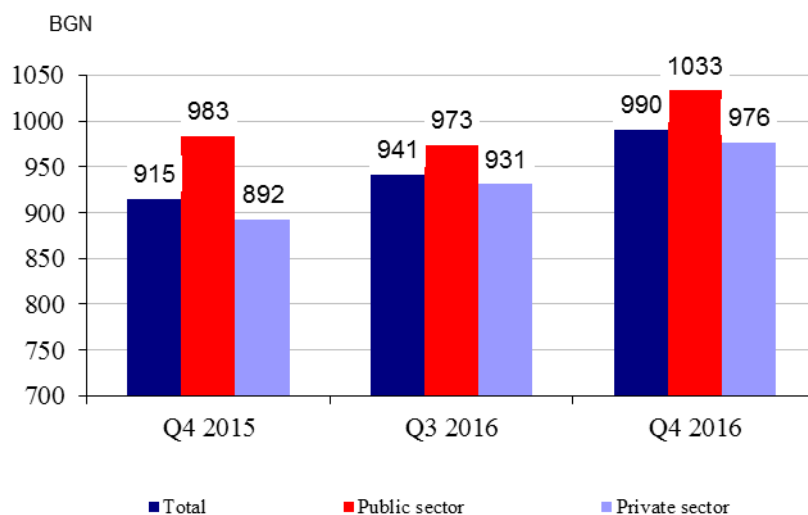
- ‘Information and communication’ - 2 248 BGN
- ‘Electricity, gas, steam and air conditioning supply’ - 1 757 BGN
- ‘Financial and insurance activities’ - 1 699 BGN.

The lowest wages and salaries were recorded in:

- ‘Accommodation and food service activities’ - 600 BGN
- ‘Other services activities’ - 689 BGN
- ‘Administrative and support service activities’ - 750 BGN.

In comparison with a year earlier the average monthly wages and salaries in public sector grew by 5.1% while in private sector - by 9.4%.

Figure 3. Gross average monthly wages and salaries by kind of ownership





Methodological notes

The source of information is the Quarterly Survey on employees, hours worked, wages and salaries, and other expenditures paid by the employer. It is sample survey which main purpose is to make a study of the current state and dynamics of some main aspects of labour market. The sample used for the survey is a stratified random sample without replacement. Stratification criteria used include: economic activity (NACE rev.2), size of the enterprise (according to the number of employees) and regional breakdown (28 districts, NUTS3).

More methodological information on the quarterly survey and data could be found on the NSI official website:

http://www.nsi.bg/sites/default/files/files/metadata/Labour_Method_1.1_EN.pdf

<http://www.nsi.bg/en/content/6398/short-term-statistics>

Annex

Table 1

Employees under labour contract at the end of the month by economic activities in 2016¹

(Number)

Economic activities	2016		
	October	November	December
Total	2287690	2287348	2271164
Agriculture, forestry and fishing	78539	74078	67223
Mining and quarrying	22031	21746	21331
Manufacturing	508660	510417	507442
Electricity, gas, steam and air conditioning supply	29880	29877	29770
Water supply, sewerage, waste management and remediation activities	35025	35376	35117
Construction	122648	122846	119996
Wholesale and retail trade; repair of motor vehicles and motorcycles	397016	398453	395752
Transportation and storage	140401	140178	138665
Accommodation and food service activities	103365	101439	104314
Information and communication	82651	83449	83319
Financial and insurance activities	57717	57871	57942
Real estate activities	21883	22003	21965
Professional, scientific and technical activities	79211	79697	79559
Administrative and support service activities	115359	115221	114836
Public administration and defence; compulsory social security	113026	112992	112770
Education	167882	168812	168121
Human health and social work activities	141549	141947	141716
Arts, entertainment and recreation	33487	33430	33960
Other service activities	37360	37516	37366

¹ Preliminary data.



Table 2

Gross average monthly wages and salaries of the employees under labour contract by economic activities in 2016¹

Economic activities	(BGN)		
	2016		
	October	November	December
Total	982	974	1012
Agriculture, forestry and fishing	783	795	835
Mining and quarrying	1357	1362	1537
Manufacturing	852	868	870
Electricity, gas, steam and air conditioning supply	1717	1668	1885
Water supply, sewerage, waste management and remediation activities	783	811	839
Construction	758	782	769
Wholesale and retail trade; repair of motor vehicles and motorcycles	896	919	946
Transportation and storage	877	880	916
Accommodation and food service activities	603	592	605
Information and communication	2242	2200	2301
Financial and insurance activities	1627	1702	1768
Real estate activities	888	952	971
Professional, scientific and technical activities	1399	1408	1456
Administrative and support service activities	745	743	763
Public administration and defence; compulsory social security	1329	1013	1062
Education	981	914	1046
Human health and social work activities	1016	1040	1068
Arts, entertainment and recreation	932	894	962
Other service activities	664	681	721

¹ Preliminary data.