



EMPLOYEES UNDER LABOUR CONTRACT AND GROSS AVERAGE WAGES AND SALARIES, FIRST QUARTER OF 2016

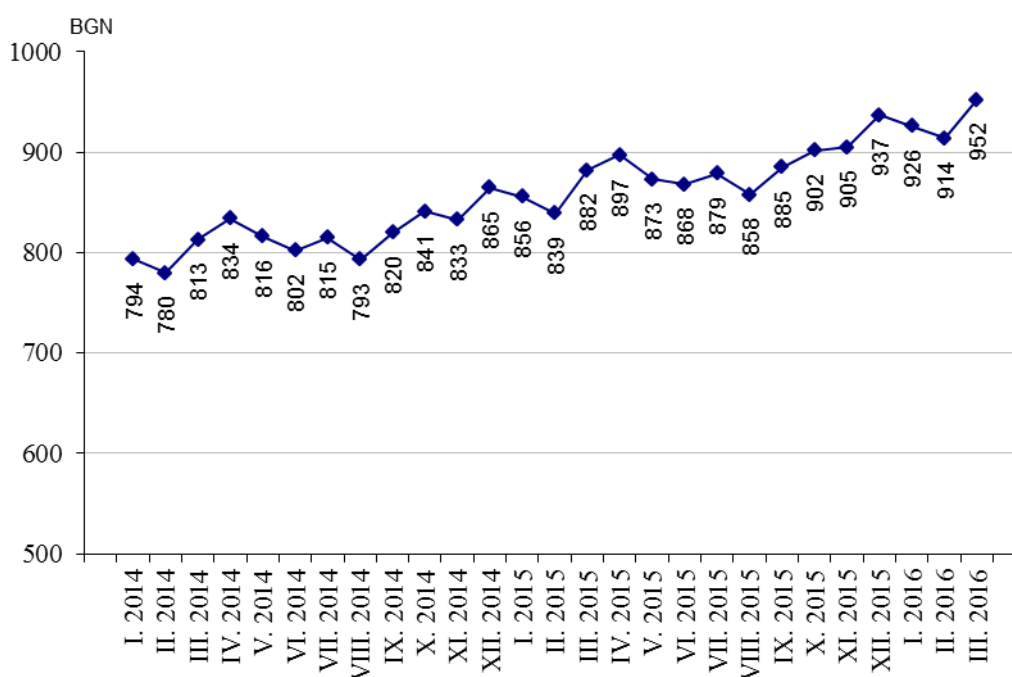
According to the preliminary data of the National Statistical Institute (NSI) at the end of March 2016 the **number of employees** under labour contract increased by 58.1 thousand or 2.6% as compared to the end of December 2015 and reached 2.28 million. The highest increase was observed in economic activities: ‘Agriculture, forestry and fishing’ - 12.6%, ‘Administrative and support service activities’ - 10.9% and ‘Other services activities’ - 8.8%. The highest decrease of the number of employees was recorded in ‘Construction’ - 2.8% and ‘Mining and quarrying’ - 2.5%.

In the structure of employees by economic activities the biggest relative share of employees was in ‘Manufacturing’ - 22.3% and ‘Wholesale and retail trade; repair of motor vehicles and motorcycles’ - 17.3%.

At the end of March 2016 as compared to March 2015 the number of employees under labour contract increased by 49.2 thousand or 2.2%. The highest increase in absolute figures was observed in economic activities ‘Manufacturing’ - 11.5 thousand, ‘Administrative and support service activities’ - 10.4 thousand and ‘Accommodation and food service activities’ - 7.9 thousand. In percentages the highest increase was in ‘Administrative and support service activities’ - 9.6%, ‘Accommodation and food service activities’ - by 8.3% and ‘Information and communication’ - by 6.1%. The highest decrease at the end of March 2016 as compared to March 2015 in absolute figures was registered in economic activity ‘Construction’ - by 5.3 thousand and in percentages in ‘Mining and quarrying’ - by 4.3%.

The **average monthly wages and salaries** of the employees under labour contract in January was 926 BGN, in February - 914 BGN and in March 2016 - 952 BGN.

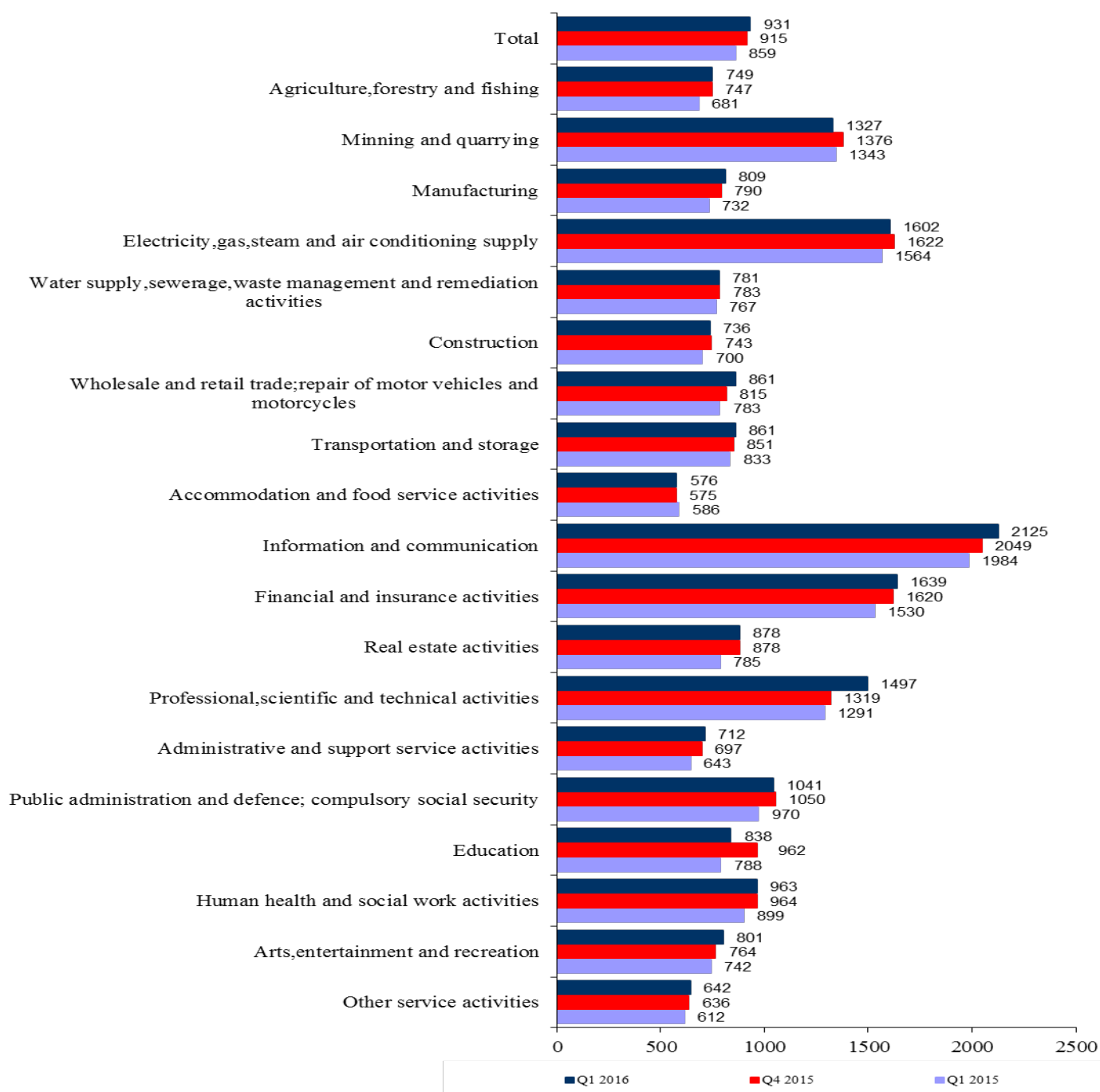
Figure 1. Gross average wages and salaries by months





In the first quarter of 2016 in comparison with the fourth quarter of 2015 the average monthly wages and salaries increased by 1.7% getting 931 BGN. The highest increase in wages and salaries was reported in 'Professional, scientific and technical activities' - 13.5%, 'Wholesale and retail trade; repair of motor vehicles and motorcycles' - 5.6% and 'Arts, entertainment and recreation' - 4.8%.

Figure 2. Gross average monthly wages and salaries of the employees under labour contract by economic activities (BGN)





Compared to the first quarter of 2015 the average monthly wages and salaries in the first quarter of 2016 rose by 8.4%. The highest growth rates were recorded in economic activities: ‘Professional, scientific and technical activities’ - 16.0%, ‘Real estate activities’ - 11.8%, and ‘Administrative and support service activities’ - 10.7%.

The economic activities with the highest wages and salaries in the first quarter of 2016 were:

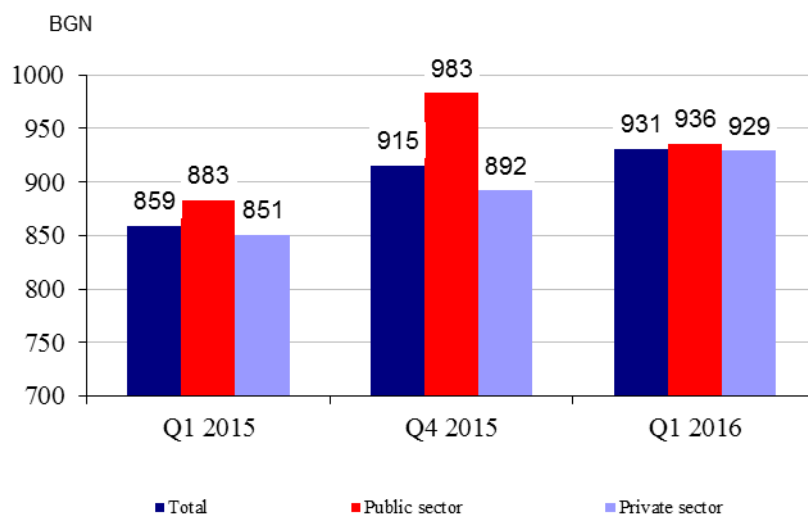
- ‘Information and communication’ - 2 125 BGN
- ‘Financial and insurance activities’ - 1 639 BGN
- ‘Electricity, gas, steam and air conditioning supply’ - 1 602 BGN.

The lowest wages and salaries were recorded in:

- ‘Accommodation and food service activities’ - 576 BGN
- ‘Other services activities’ - 642 BGN
- ‘Administrative and support service activities’ - 712 BGN.

In comparison with a year earlier the average monthly wages and salaries in public sector grew by 6.0% while in private sector - by 9.2%.

Figure 3. Gross average monthly wages and salaries by kind of ownership





Methodological notes

The source of information is the Quarterly Survey on employees, hours worked, wages and salaries, and other expenditures paid by the employer. It is sample survey which main purpose is to make a study of the current state and dynamics of some main aspects of labour market. The sample used for the survey is a stratified random sample without replacement. Stratification criteria used include: economic activity (NACE rev. 2), size of the enterprise (according to the number of employees) and regional breakdown (28 districts, NUTS 3).

More methodological information on the quarterly survey and data could be found on the NSI official website:

http://www.nsi.bg/sites/default/files/files/metadata/Labour_Method_1.1_EN.pdf

<http://www.nsi.bg/en/content/6398/short-term-statistics>



Annex

Table 1

Employees under labour contract at the end of the month by economic activities in 2016¹

(Number)

Economic activities	2016		
	January	February	March
Total	2260673	2270696	2278837
Agriculture, forestry and fishing	67259	70299	76974
Mining and quarrying	22971	22949	22785
Manufacturing	506828	507764	507912
Electricity, gas, steam and air conditioning supply	29992	30096	30166
Water supply, sewerage, waste management and remediation activities	35353	35324	34893
Construction	121005	120798	120095
Wholesale and retail trade; repair of motor vehicles and motorcycles	394406	394559	394343
Transportation and storage	137634	137906	137852
Accommodation and food service activities	102654	103183	103473
Information and communication	78950	79498	80007
Financial and insurance activities	57692	57774	57721
Real estate activities	22442	22529	22420
Professional, scientific and technical activities	77995	77883	78224
Administrative and support service activities	113028	116308	119123
Public administration and defence; compulsory social security	111521	112333	112624
Education	171028	171117	171197
Human health and social work activities	140119	140307	138587
Arts, entertainment and recreation	33455	33611	33764
Other service activities	36341	36458	36677

¹ Preliminary data.



Table 2

Gross average monthly wages and salaries of the employees under labour contract by economic activities in 2016¹

Economic activities	(BGN)		
	2016		
	January	February	March
Total	926	914	952
Agriculture, forestry and fishing	726	735	782
Mining and quarrying	1267	1251	1465
Manufacturing	794	796	836
Electricity, gas, steam and air conditioning supply	1574	1533	1697
Water supply, sewerage, waste management and remediation activities	766	759	818
Construction	714	738	757
Wholesale and retail trade; repair of motor vehicles and motorcycles	847	858	877
Transportation and storage	865	841	877
Accommodation and food service activities	578	563	587
Information and communication	2116	2044	2214
Financial and insurance activities	1638	1587	1694
Real estate activities	860	868	906
Professional, scientific and technical activities	1473	1496	1522
Administrative and support service activities	714	697	724
Public administration and defence; compulsory social security	1179	970	977
Education	835	833	846
Human health and social work activities	950	953	987
Arts, entertainment and recreation	775	805	823
Other service activities	638	637	651

¹ Preliminary data.