



EMPLOYEES UNDER LABOUR CONTRACT AND GROSS AVERAGE WAGES AND SALARIES, SECOND QUARTER OF 2015

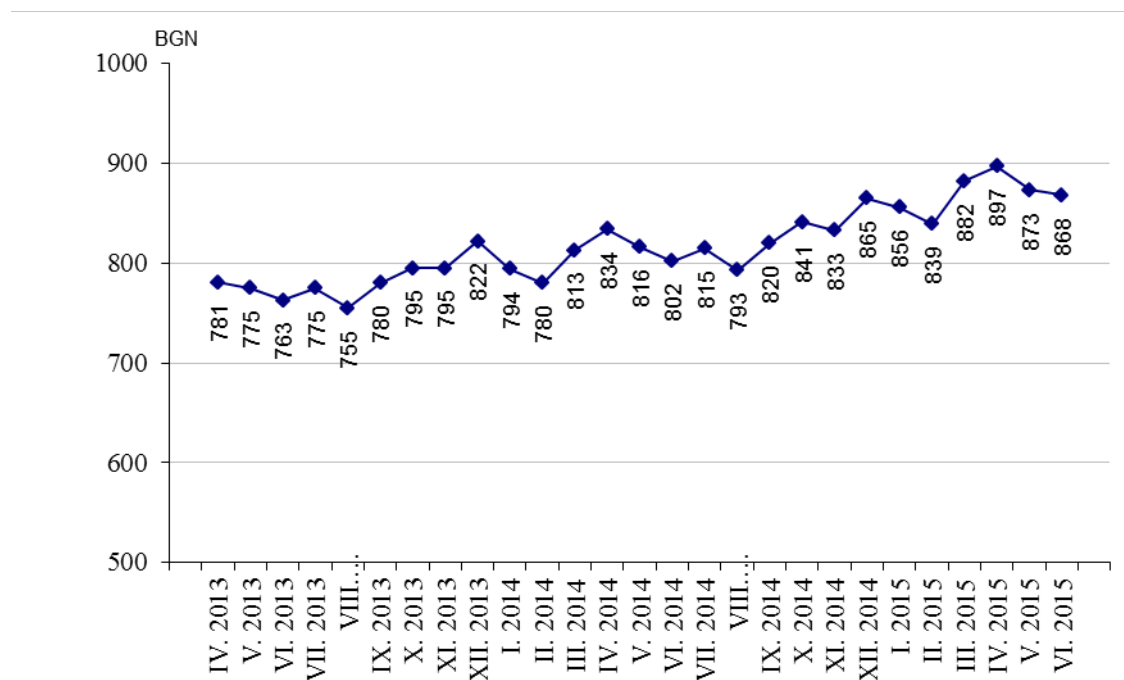
According to the preliminary data of the National Statistical Institute (NSI) at the end of June 2015 the **number of employees** under labour contract increased by 80.9 thousand or 3.6% as compared to the end of March 2015 and reached 2.31 million. The highest increase was observed in seasonal economic activities: ‘Accommodation and food service activities’ - 58.7%, ‘Arts, entertainment and recreation’ - 10.4% and ‘Agriculture, forestry and fishing’ - 7.2%. Decrease of employees was recorded in ‘Education’ - 2.6%.

In the structure of employees by economic activities the biggest relative share of employees was in ‘Manufacturing’ - 21.5% and ‘Wholesale and retail trade; repair of motor vehicles and motorcycles’ - 16.9%.

At the end of June 2015 as compared to June 2014 the number of employees under labour contract increased by 10.2 thousand or 0.4%. The highest increase in absolute figures was observed in economic activities ‘Information and communication’ - 6.0 thousand, ‘Manufacturing’ - 5.1 thousand and ‘Construction’ - 2.8 thousand. In percentages the highest increase was in ‘Information and communication’ - 8.5% and ‘Agriculture, forestry and fishing’ - by 3.6%. The highest decrease at the end of June 2015 as compared to June 2014 was registered in economic activity ‘Administrative and support service activities’ - by 4.6 thousand and in percentages - in ‘Real estate activities’ - by 4.9%.

The **average monthly wages and salaries** of the employees under labour contract in April was 897 BGN, in May - 873 BGN, and in June 2015 - 868 BGN.

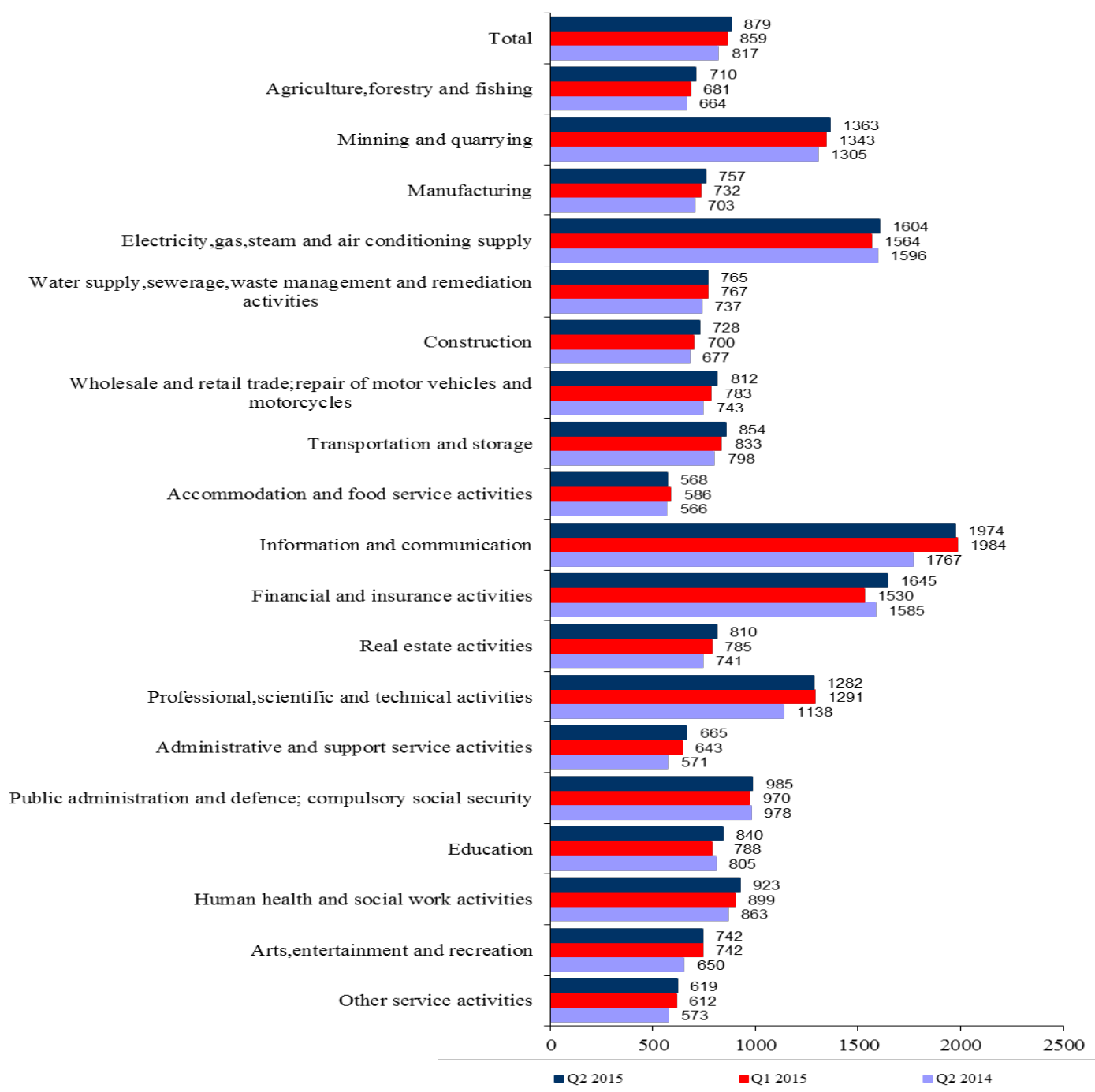
Figure 1. Average wages and salaries by months





In the second quarter of 2015 in comparison with the first quarter of 2015 the average monthly wages and salaries increased by 2.3% getting 879 BGN. The highest increase in wages and salaries was reported in 'Financial and insurance activities' - 7.5% and 'Education' - 6.6% and 'Constriction' - 4.0%.

Figure 2. Average monthly wages and salaries of the employees under labour contract by economic activities (BGN)





Compared to the second quarter of 2014 the average monthly wages and salaries in the second quarter of 2015 rose by 7.6%. The highest growth rates were recorded in economic activities: ‘Administrative and support service activities’ - 16.5%, ‘Arts, entertainment and recreation’ - 14.2%, and ‘Professional, scientific and technical activities’ - 12.7%.

The economic activities with the highest wages and salaries in the second quarter of 2015 were:

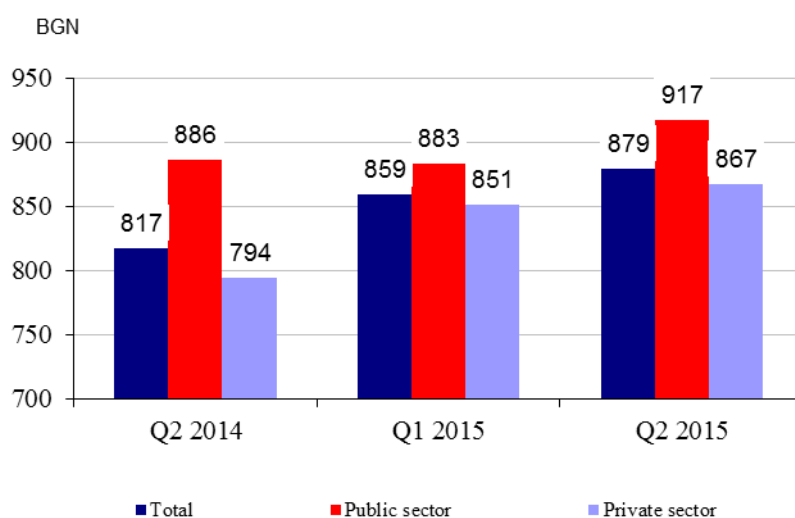
- ‘Information and communication’ - 1 974 BGN
- ‘Financial and insurance activities’ - 1 645 BGN
- ‘Electricity, gas, steam and air conditioning supply’ - 1 604 BGN.

The lowest wages and salaries were recorded in:

- ‘Accommodation and food service activities’ - 568 BGN
- ‘Other services activities’ - 619 BGN
- ‘Administrative and support service activities’ - 665 BGN.

In comparison with a year earlier the average monthly wages and salaries in public sector grew by 3.5% while in private sector - by 9.2%.

Figure 3. Average monthly wages and salaries by kind of ownership





Methodological notes

The source of information is the Quarterly Survey on employees, hours worked, wages and salaries, and other expenditures paid by the employer. It is sample survey which main purpose is to make a study of the current state and dynamics of some main aspects of labour market. The sample used for the survey is a stratified random sample without replacement. Stratification criteria used include: economic activity (NACE rev.2), size of the enterprise (according to the number of employees) and regional breakdown (28 districts, NUTS3).

More methodological information on the quarterly survey and data could be found on the NSI official website:

http://www.nsi.bg/sites/default/files/files/metadata/Labour_Method_1.1_EN.pdf

<http://www.nsi.bg/en/content/6398/short-term-statistics>

Annex

Table 1

Employees under labour contract at the end of the month by economic activities in 2015¹

(Number)

Economic activities	2015		
	April	May	June
Total	2244281	2281838	2310483
Agriculture, forestry and fishing	74702	76579	77878
Mining and quarrying	23953	23929	23961
Manufacturing	497441	496555	497866
Electricity, gas, steam and air conditioning supply	30775	30688	30683
Water supply, sewerage, waste management and remediation activities	35083	35243	34932
Construction	128452	130766	130239
Wholesale and retail trade; repair of motor vehicles and motorcycles	388113	387168	390443
Transportation and storage	134419	135209	135826
Accommodation and food service activities	101637	131079	151584
Information and communication	75342	75628	75813
Financial and insurance activities	56721	56836	57468
Real estate activities	21699	22306	22666
Professional, scientific and technical activities	75472	75144	75310
Administrative and support service activities	109778	112562	114349
Public administration and defence; compulsory social security	114387	114101	114062
Education	170146	169085	166019
Human health and social work activities	137963	139131	140074
Arts, entertainment and recreation	33077	33776	35443
Other service activities	35121	36053	35867

¹ Preliminary data.



Table 2

Average monthly wages and salaries of the employees under labour contract by economic activities in 2015

Economic activities	(BGN)		
	2015		
	April	May	June
Total	897	873	868
Agriculture, forestry and fishing	713	685	730
Mining and quarrying	1312	1264	1512
Manufacturing	754	756	760
Electricity, gas, steam and air conditioning supply	1578	1630	1606
Water supply, sewerage, waste management and remediation activities	769	767	760
Construction	720	729	734
Wholesale and retail trade; repair of motor vehicles and motorcycles	820	809	805
Transportation and storage	848	853	860
Accommodation and food service activities	567	580	560
Information and communication	2013	1936	1972
Financial and insurance activities	1832	1479	1625
Real estate activities	824	805	800
Professional, scientific and technical activities	1292	1261	1293
Administrative and support service activities	676	666	653
Public administration and defence; compulsory social security	1120	918	917
Education	832	888	800
Human health and social work activities	944	925	899
Arts, entertainment and recreation	758	751	719
Other service activities	625	631	602

¹ Preliminary data.