



EMPLOYEES UNDER LABOUR CONTRACT AND AVERAGE WAGES AND SALARIES, FOURTH QUARTER OF 2012

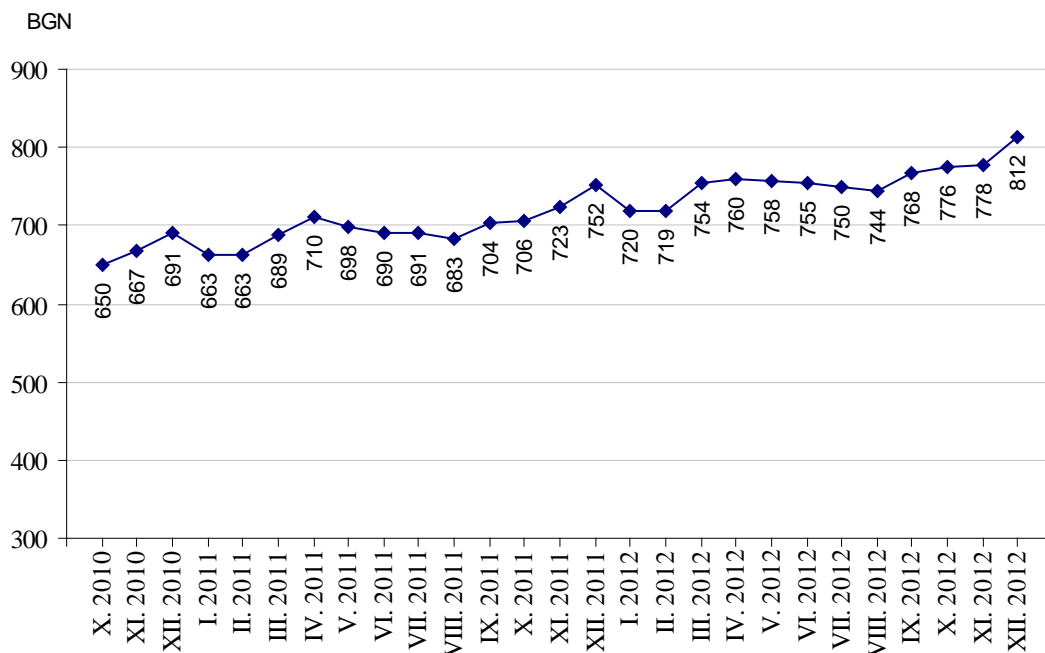
According to the preliminary data of the National Statistical Institute (NSI) at the end of December 2012 the number of employees under labour contract decreased by 42.2 thousands or 2.0% as compared to the end of September 2012 and reached 2.09 million. Compared to the end of the third quarter of 2012 the highest decrease was observed in economic activities “Accommodation and food service activities” - 15.4%, “Agriculture, forestry and fishing”- 8.3% and “Other service activities” - by 5.5%. An increase of employees was recorded in “Administrative and support service activities” - 1.7%, “Information and communication” - 1.4%, and “Education” and “Arts, entertainment and recreation” - by 0.8%.

In the structure of employees by economic activities the biggest relative share of employees was in “Manufacturing” - 22.3% and “Wholesale and retail trade; repair of motor vehicles and motorcycles” - 18.0%.

At the end of December 2012 as compared to December 2011 the number of employees under labour contract declined by 45.0 thousands or 2.1%. The highest decrease in absolute figures was observed in economic activities “Manufacturing” - 18.4 thousands and “Wholesale and retail trade; repair of motor vehicles and motorcycles” - 9.6 thousands. In percentages the highest decrease was in “Accommodation and food service activities” - 8.2% and “Other service activities” - by 6.9%.

The average monthly wages and salaries of the employees under labour contract in October was 776 Levs, in November - 778 Levs and in December 2012 - 812 Levs.

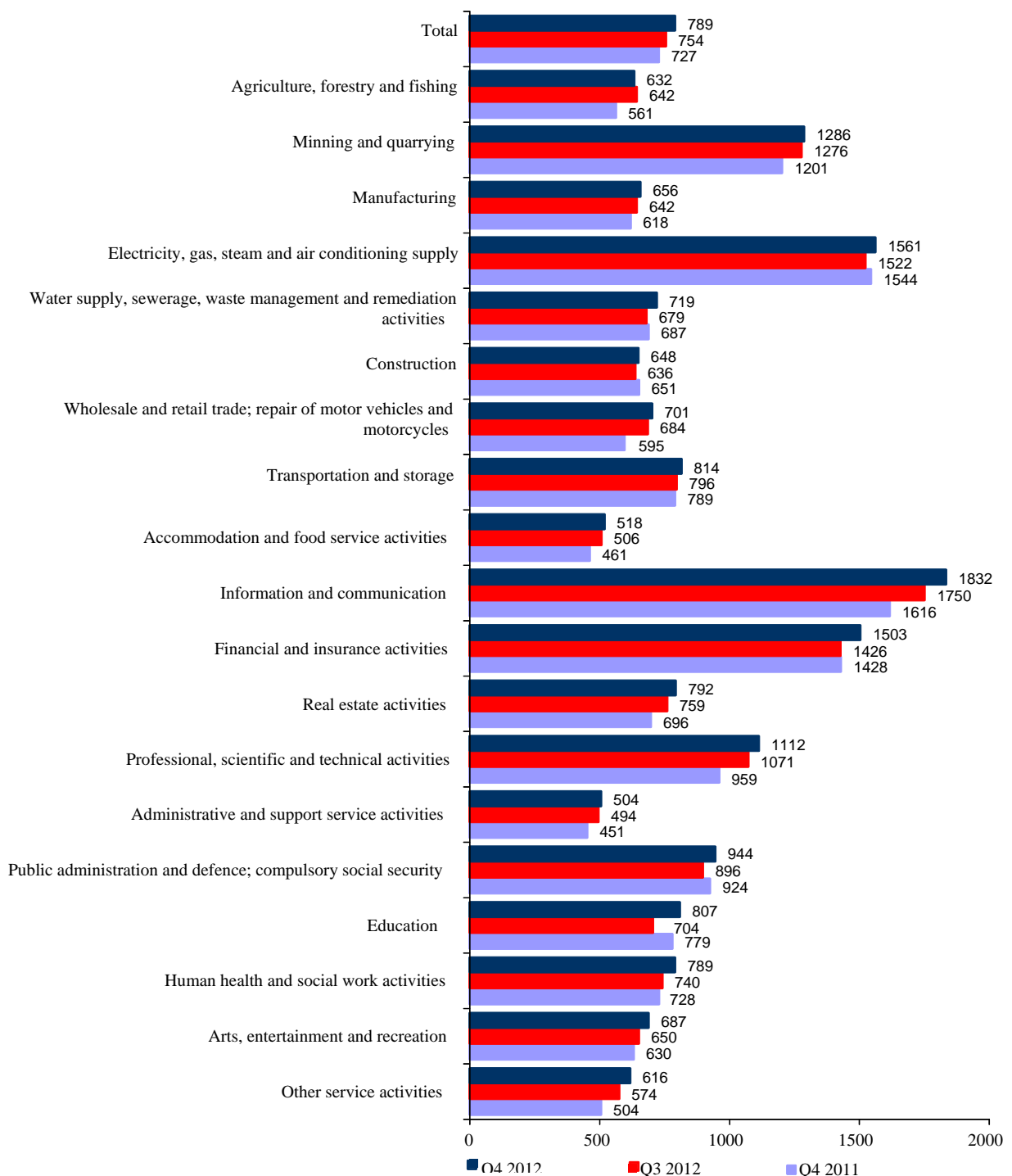
Figure 1. Average wages and salaries by months





In the fourth quarter of 2012 in comparison with the third quarter of 2012 the average monthly wages and salaries increased by 4.6% getting 789 Levs. The highest increase in wages and salaries was reported in “Education” - 14.6%, “Other service activities” - 7.3% and “Human health and social work activities” - 6.6%. A decrease of the average monthly wages and salaries by 1.6% was registered in “Agriculture, forestry and fishing”.

Figure 2. Average monthly wages and salaries of the employees under labour contract by economic activities (BGN)





Compared to the fourth quarter of 2011 the average monthly wages and salaries in the fourth quarter of 2012 rose by 8.5%. The highest growth rates were recorded in economic activities: “Other service activities” - 22.2%, “Wholesale and retail trade; repair of motor vehicles and motorcycles” - 17.8% and “Professional, scientific and technical activities” - 16.0%.

The economic activities with the highest wages and salaries in the fourth quarter of 2012 were:

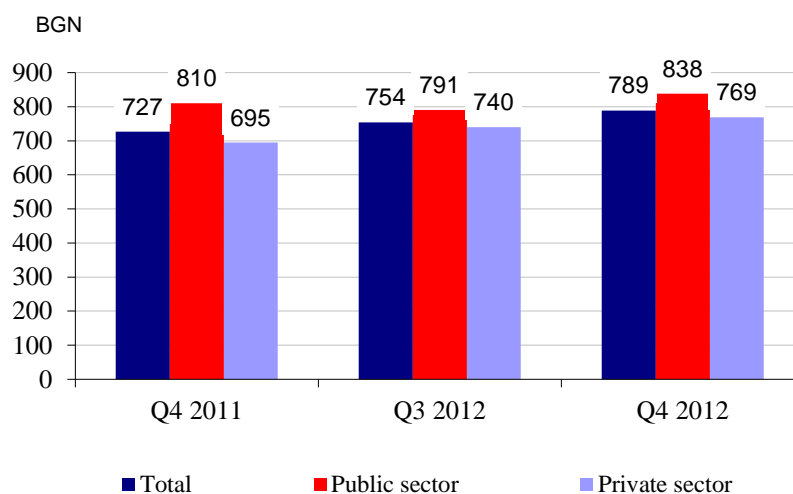
- “Information and communication” - 1 832 Levs;
- “Electricity, gas, steam and air conditioning supply” - 1 561 Levs;
- “Financial and insurance activities” - 1 503 Levs.

The lowest wages and salaries were recorded in:

- “Administrative and support service activities” - 504 Levs;
- “Accommodation and food service activities” - 518 Levs;
- “Other services” - 616 Levs.

In comparison with a year earlier the average monthly wages and salaries in public sector grew by 3.5%, while in private sector - by 10.6%.

Figure 3. Average monthly wages and salaries





Methodological notes

The source of information is the Quarterly Survey on employees, hours worked, wages and salaries, and other expenditures paid by the employer. It is sample survey which main purpose is to make a study of the current state and dynamics of some main aspects of labour market. The sample used for the survey is a stratified random sample without replacement. Stratification criteria used include: economic activity (NACE rev.2), size of the enterprise (according to the number of employees) and regional breakdown (28 districts, NUTS3).

More methodological information on the quarterly survey and data could be found on NSI official web page - <http://www.nsi.bg/otrasalen.php?otr=51>.



Annex

Table 1

Employees under labour contract at the end of the month by economic activities in 2012¹

Economic activity	(Numbers at the end of the month)		
	2012		
	October	November	December
Total	2111996	2103410	2087388
Agriculture, forestry and fishing	59085	57875	55133
Mining and quarrying	24562	24458	24180
Manufacturing	472807	470281	464836
Electricity, gas, steam and air conditioning supply	30453	30457	30371
Water supply, sewerage, waste management and remediation activities	35855	35697	35516
Construction	125457	124204	119507
Wholesale and retail trade; repair of motor vehicles and motorcycles	380557	379938	376551
Transportation and storage	122274	122011	120504
Accommodation and food service activities	80697	77513	78729
Information and communication	63231	63754	63856
Financial and insurance activities	53525	53431	53357
Real estate activities	19309	19248	19174
Professional, scientific and technical activities	60517	59929	59787
Administrative and support service activities	117131	117182	119047
Public administration and defence; compulsory social security	115689	115970	115623
Education	165352	165965	165426
Human health and social work activities	130794	130745	130094
Arts, entertainment and recreation	27666	27722	28541
Other service activities	27035	27030	27156

¹Preliminary data.



Table 2

Average monthly wages and salaries of the employees under labour contract by economic activities in 2012¹

(BGN)

Economic activity	2012		
	October	November	December
Total	776	778	812
Agriculture, forestry and fishing	600	595	706
Mining and quarrying	1112	1331	1417
Manufacturing	648	654	667
Electricity, gas, steam and air conditioning supply	1481	1532	1670
Water supply, sewerage, waste management and remediation activities	679	723	756
Construction	651	652	640
Wholesale and retail trade; repair of motor vehicles and motorcycles	679	694	730
Transportation and storage	779	836	826
Accommodation and food service activities	511	510	533
Information and communication	1757	1824	1914
Financial and insurance activities	1419	1536	1553
Real estate activities	768	782	827
Professional, scientific and technical activities	1075	1102	1160
Administrative and support service activities	496	507	509
Public administration and defence; compulsory social security	1103	855	875
Education	812	758	851
Human health and social work activities	771	786	812
Arts, entertainment and recreation	659	684	718
Other service activities	561	576	711

¹Preliminary data.