



CRÈCHES IN 2010

The number of detached crèches and groups in kindergartens functioning in the country at the end of 2010 is 731 with 28 139 places in them. There are 609 crèches in urban areas with 25 869 places and 122 crèches with 2 270 places in rural areas respectively.

The tendencies of increasing of the establishments' number as well as the number of places in them continue in 2010. The number of places in detached crèches and groups in kindergartens as of 31.12.2010 increases by 1 187 (4.4%) compared to the end of 2009. The total increase is mainly due to the increase of number of places in groups in kindergartens – by 1 035 (7.7%).

Table 1. Crèches and places in crèches during 2005 - 2010 the period

	(Number)					
	2005	2006	2007	2008	2009	2010
Establishments	641	668	671	673	701	731
Places	22 094	23 478	24 409	25 091	26 952	28 139

The number of children new entrants in detached crèches and groups in kindergartens in 2010 is 27 026 or 369 children less than the children new entrants in 2009. At the end of the year 29 507 children are raised and brought up in crèches. 15 302 of them are boys, and – 14 205 girls.

Table 2. Children in crèches during the 2005 - 2010 period

	(Number)					
	2005	2006	2007	2008	2009	2010
Entrants during the year	22675	24082	24597	25023	27395	27026
Children, as of 31.12.	22993	25040	26689	27297	30066	29507

The distribution of children raised in crèches by age remains almost without changes in 2010. The highest is the share of children aged 2 to 3 years – 76.3%, the share of children aged 1 to 2 years is 20.5%. The smallest is the share of children aged up to 1 year - 35 or 0.1%. The number of children aged 3 years and over is 900 or 3.1%.

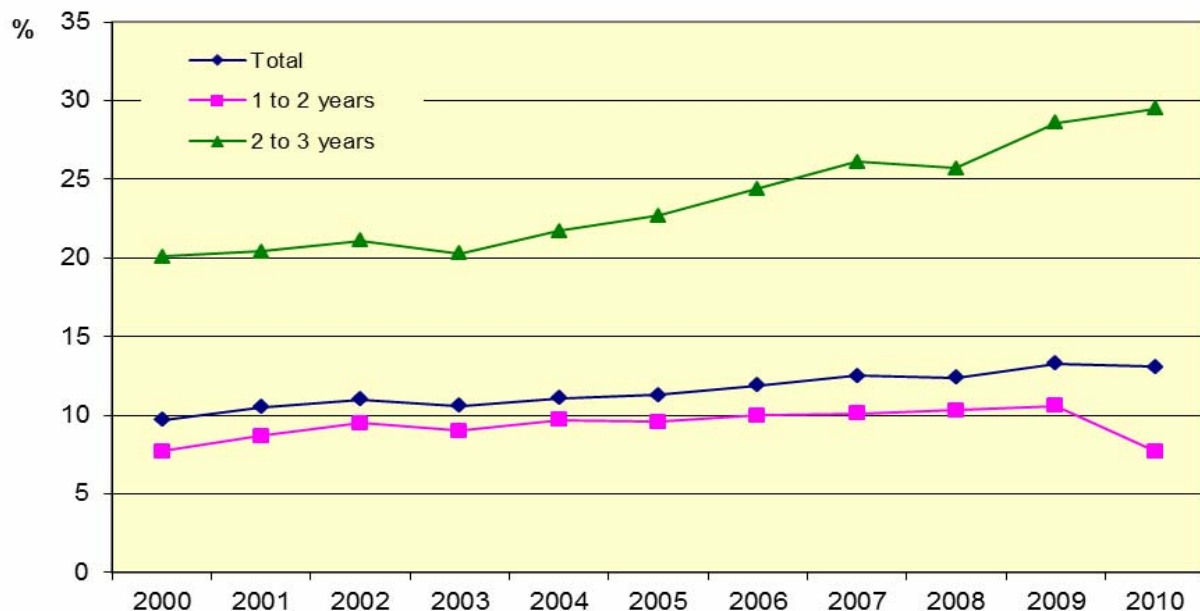


Table 3. Children in creches at the end of 2010 by age

	Number	Structure - %
Children - total	29 507	100.0
Up to 1 year	35	0.1
1 to 2 years	6 059	20.5
2 to 3 years	22 513	76.3
3 years and over	900	3.1

The coverage of children brought up in crèches at the end of 2010 is 13.1%. The indicator is expressed by ratio of the number of children aged up to 3 years brought up in detached crèches and groups in kindergartens per 100 of children of the same age group of the total population. In 2010 the indicator remains almost without changes compared to 2009. The coverage of children aged 2 years increases – from 28.6% in 2009 to 29.5% in 2010. However, the coverage of children aged 1 year decreases by almost 3 percentage points and at the end of 2010 is 7.7%.

Figure 1. Coverage of children aged up to 3 years brought in creches and groups in kindergarten at the end of the year





6 908 persons are working on a basic labour contract in crèches at the end of 2010 in order to ensure conditions for physical and mental development and education of the children. The number of medical specialists on Health care is 3 783. The most of them are nurses (3 654) and midwives (100). The attendance of children is provided by 3 121 persons - non-medical personnel. Compared to 2009 an increase by 5.9 % is observed.

**Table 4. Personnel in creches by categories
during the 2005 – 2010 period**
(As of 31.12.)

Year	Medical specialists on Health cares			Other non-medical personnel
	total	nurses	midwives	
2005	3 598	3 497	72	2 770
2006	3 796	3 690	76	2 859
2007	3 861	3 751	73	2 879
2008	3 925	3 821	68	2 842
2009	3 801	3 671	97	2 947
2010	3 783	3 654	100	3 121



METHODOLOGICAL NOTES

The survey “Crèches” is an exhaustive survey carried out by the National Statistical Institute annually. Detached crèches as well as groups in kindergartens are covered.

Sources of data are detached crèches as well as groups in kindergartens. Data on personnel, places in crèches and number of children as well as their distribution by age are collected.

Crèches are set up to support families in raising children up to the age of three years and to ensure their normal physical and mental development in accordance with the Law on Health and Ordinance № 26 / 18.11.2008 of the Minister of Health. Crèches are organizationally distinct structures, where medical and other specialists raise, educate and train children aged from three months to three years.

In special exceptional cases and if there are medical prescriptions it is possible to permit extend stay of children in crèches up to six months after completion of 3 years. Groups for children aged between 3 months and 3 years could be opened at daily and weekly kindergartens as the organization of work there do not differ from the work of detached crèches.

Additional statistical information about the Survey on crèches can be provided through the NSI’s “User Services” Division, or by e-mail: info@nsi.bg.