



CONSTRUCTION PRODUCTION INDICES IN JUNE 2010^{1,2}

By the preliminary data of the NSI, the total construction production in June 2010 was 17.5% less than the same month of the previous year. A drop by 26.2% was registered in the production of building construction, while in the civil engineering production the decrease was 1.4% (Table 1).

Table 1

Construction Production Indices in June 2010 (Preliminary data)

	June			January - June
	2005 = 100	Previous month = 100	The same month of 2009 = 100	The same period of 2009 = 100
Construction - total	118.9	110.3	82.5	77.4
Building construction	99.0	109.7	73.8	68.5
Civil engineering	164.6	111.2	98.6	95.4

In June 2010, the construction production was 10.3% above the level of the previous month. The production of building construction increased by 9.7%, but in the civil engineering production it was 11.2%.

In the period January - June 2010, the total production in construction fell by 22.6% compared to the same period of 2009. The registered drop in the building construction was 31.5%, while in the civil engineering production the decrease was 4.6% (Figure 1).

¹ Data for June 2010 is preliminary.

² The monthly indices show the short-term changes in the construction production between two comparable periods. This information can be used to analyze the current state of the construction activity in the country, as well as short-term forecast for its future development. The indices are calculated on the base of information on hours worked in the construction. The data is collected with monthly sample survey, which includes construction enterprises, which production exceeds 75% of the total production in construction.

Construction Production Indices - total and separately for building construction and civil engineering are calculated on the base (2005 = 100) for actual hours worked from all directly employed with the construction works.

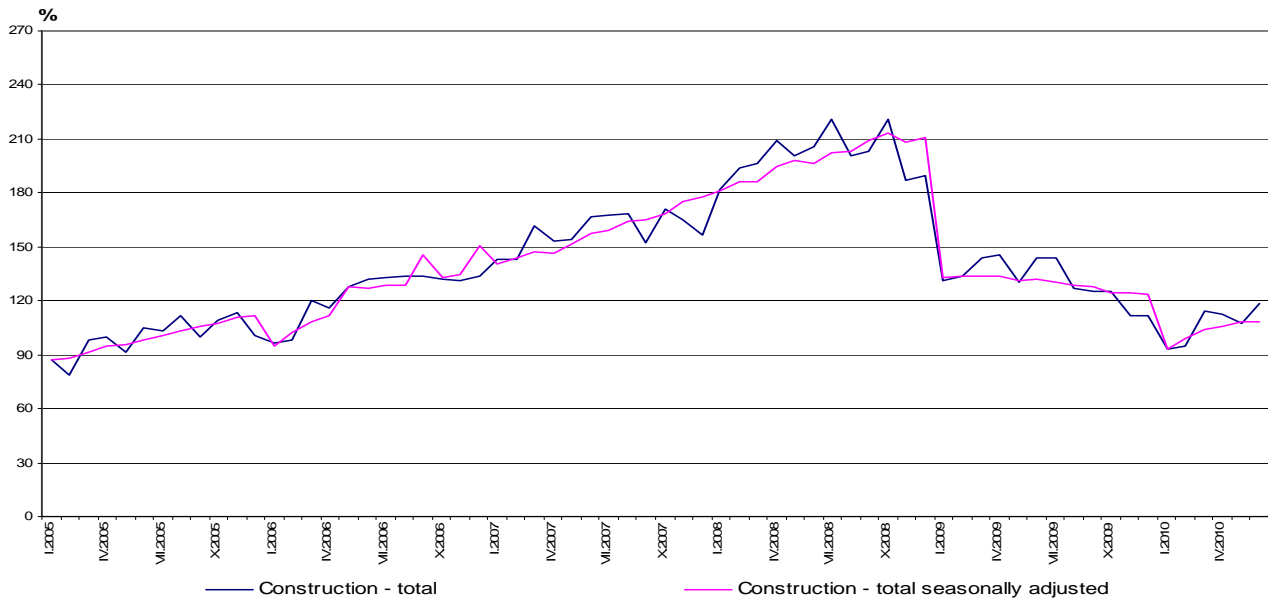
According to the Classification of types of constructions (CC) the building construction includes construction of residential and non-residential buildings and civil engineering - infrastructure construction of roads, bridges, pipelines, power lines, telecommunication and other construction equipment.



Figure 1. Construction Production Indices (2005 = 100)



Figure 2. Construction Production Indices (2005 = 100)³



³ Since June 2010 NSI publish seasonally adjusted data on Construction Production Indices. Seasonal adjustment aids interpretation the data by removing annually recurring fluctuations, like due to holidays, different number of the working days and all other seasonal patterns. The seasonally adjusted data on Construction Production Indices can be found in NSI internet web-site: (<http://www.nsi.bg/otrasalen.php?otr=32>).